

MATERIAL AND FINISH:

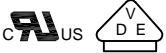
Insulator: Glass filled Thermoplastic, color black, UL-94V-0

Contacts: Bronze, Nickel plated

ELECTRICAL SPECIFICATIONS:

Rated current: 2.5A

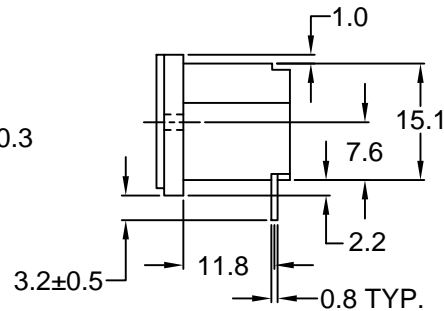
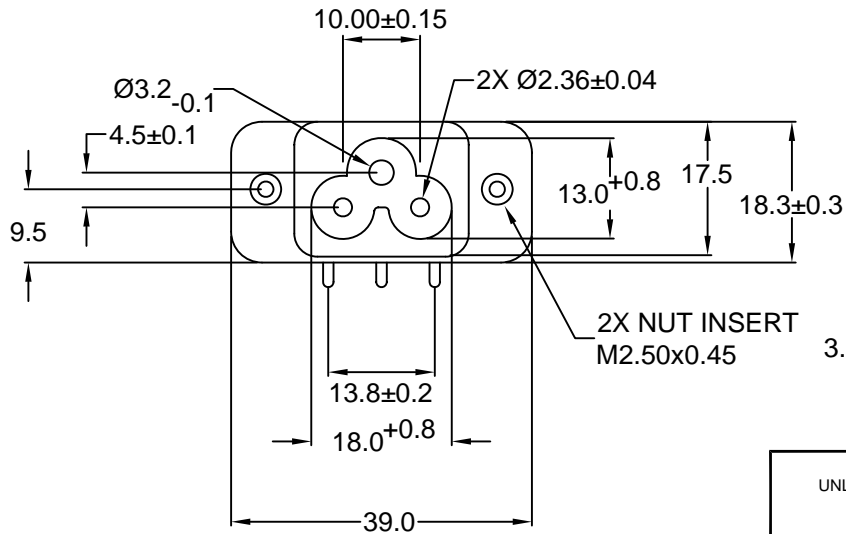
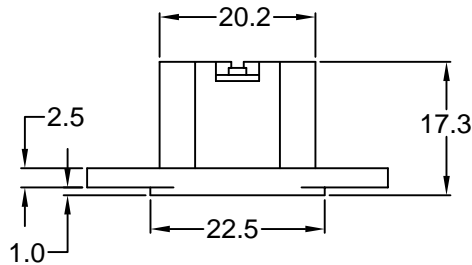
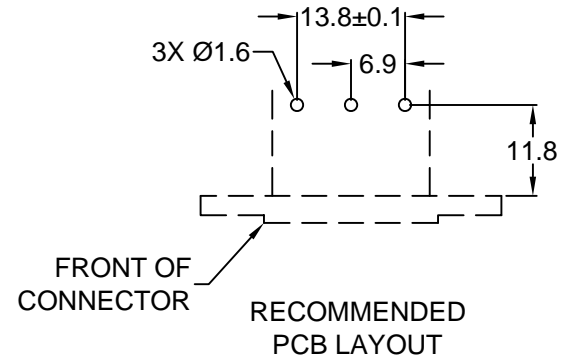
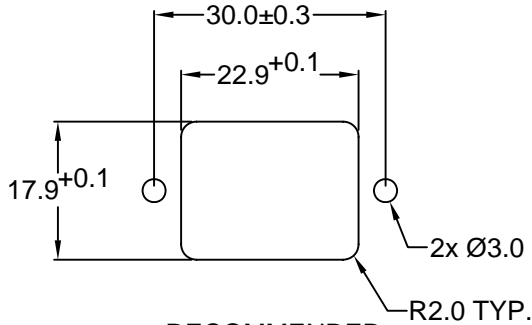
Rated voltage: 250VAC



Insulation resistance: 100 Mohm min. @ 500VDC

Dielectric withstanding voltage: 2000VAC for one minute

**RoHS
COMPLIANT**



REV	DATE	CHANGE	CHNG				CHK				APPR			
			TD	TD	PB	SS	TD	PB	SS	TD	PB	SS	TD	PB
A	03/00	DELETE DUPLICATE DIM			JJ			PB						
B	5/9/00	REV'D TOL. PER IEC 60320			JJ			PB						
C	8/6/01	ADD PANEL CUTOUT			PB			SS						
D	11/09/01	REVISED / UPDATED			GQ			TD						
E	2/15/06	CHNG. PANEL CUTOUT, ADD OVERALL DEPTH			PB									

TOLERANCE UNLESS OTHERWISE SPECIFIED	
X	± 1
X.X	± 0.4
X.XX	± 0.20
DRAWN BY	SS
DATE:	03/02/00
CHECK BY	PB
DATE:	03/02/00
APPR BY	TD
DATE:	03/02/00

Power Dynamics, Inc.
Phone: 973 560-0019 Whippany, New Jersey Fax: 973 560-0076

PART: MINIATURE IEC 60320 C6 APPL. INLET;
FLUSH FLANGE MOUNT, PC TERMINALS

PART #: 42R51-5131RA		SHEET 1 of 1
SIZE: A	ALL DIMENSIONS FOR REFERENCE ONLY DIMENSIONS ARE IN MILLIMETERS	
SCALE: NTS		REV: E