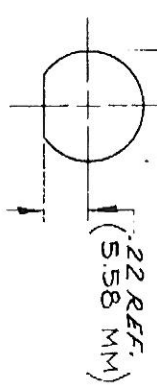
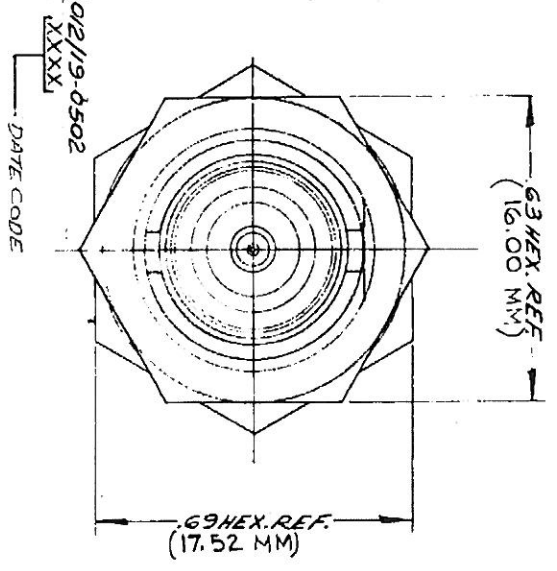


- NOTES:
1. FOR USE WITH RG 180/U CABLE.
 2. FOR CABLE TRIMMING USE KT-116 & KTD-161
 3. FOR CRIMPING USE DIE SIZE 07.
 4. FOR CABLING INSTRUCTIONS SEE CP-465.
 5. ITEM ⑧ TO BE SUPPLIED UNASSEMBLED.

UNLESS OTHERWISE SPECIFIED:

1. TOLERANCES: FRACTIONS & 2 PLACE DECIMALS ±.010
2. REMOVE ALL BURRS. BREAK SHARP EDGES .005 MAX.
3. PLUG CONCENTRICITY OF ANY 2 DIAMETERS SHALL NOT EXCEED HALF THE SUM OF THEIR TOLERANCES
4. SURFACE FINISHES: 3.3 MICRONS RMS MAX.
5. ALL DIMENSIONS PRIOR TO PLATING.



MOUNTING HOLE

(SHEET 1 OF 2)

ISSUE	REVISIONS
CHANGES	
0	ER/1951G M.A. 18 JUL 79
1	CN 22 73 C GJG 8 JUN 81
5	CN 28237 AUG 86 CHC 18 AUG 86
6	CN 38279 A LNN 14 JUN 90

S-D

M39012/19-0502

SCALE 4:1

KC-19-248

USED ON:

AMER ELECT P.O. NO. 1604

FINISH:

SPEC KER-10004

MATL:

SPEC:

BVC BULKHEAD JACK

DATE 18 JUL 79

DATE 20 JUL 79

KINGS ELECTRONICS

345 BLENDED ROAD

TUCKANDER, N.Y. 10707

M39C12/19-0502

(SHEET 1 OF 2)

S-D

