



50 Ohm 2 Watts Precision Brass N Male RF Load Up To 18 GHz

**TECHNICAL DATA SHEET** PE6009

**50 Ohm 2 Watts Precision Brass N Male RF Load Up To 18 GHz**

**Configuration**

RF Load Design	Precision
Connector	N Male
Body Style	Straight

**Electrical Specifications**

Frequency Range, GHz	DC to 18
Impedance, Ohms	50
Maximum VSWR	1.3:1
Maximum Input Power, Watts	2

**Mechanical Specifications**

**Temperature**

Operating Range, deg C	-65 to +125
------------------------	-------------

**Size**

Length, in [mm]	0.98 [24.89]
Width/Dia., in [mm]	0.69 [17.53]
Weight, lbs [g]	0.08 [36.29]

**Connector**

Type	N Male
Inner Conductor Material and Plating	Beryllium Copper, Gold
Outer Conductor Material and Plating	Brass, Nickel
Body Material and Plating	Brass, Nickel
Dielectric Type	PTFE

**Compliance Certifications** (visit [www.Pasternack.com](http://www.Pasternack.com) for current document)

RoHS Compliant	Yes
----------------	-----

**Plotted and Other Data**

Notes: Values at 25 °C, sea level

URL: <http://www.pasternack.com/2-watts-n-male-rf-load-up-to-18-ghz-precision-pe6009-p.aspx>

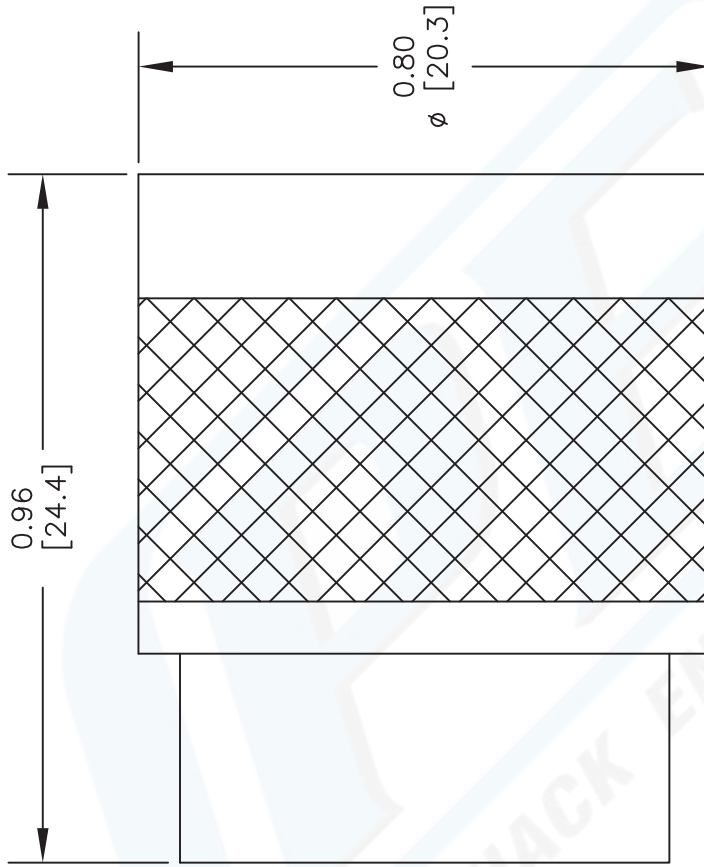
50 Ohm 2 Watts Precision Brass N Male RF Load Up To 18 GHz from Pasternack Enterprises has same day shipment for domestic and International orders. Our RF, microwave and fiber optic products maintain a 99% availability and are part of the broadest selection in the industry.

The information contained in this document is accurate to the best of our knowledge and representative of the part described herein. It may be necessary to make modifications to the part and/or the documentation of the part, in order to implement improvements. Pasternack reserves the right to make such changes as required. Unless otherwise stated, all specifications are nominal.



# PE6009 CAD Drawing

50 Ohm 2 Watts Precision Brass N Male RF Load Up To 18 GHz



DWG TITLE

**PE6009**

NOTES:  
1. UNLESS OTHERWISE SPECIFIED ALL DIMENSIONS ARE NOMINAL.  
2. ALL SPECIFICATIONS ARE SUBJECT TO CHANGE WITHOUT NOTICE AT ANY TIME.  
3. DIMENSIONS ARE IN INCHES [mm].

FSCM NO. 53919

CAD FILE

072602

SCALE N/A

SIZE A

2233



**PASTERNAK**<sup>®</sup>  
Pasternack Enterprises, Inc.  
P.O. Box 16759 | Irvine | CA | 92623

Phone: (949) 261-1920 | Fax: (949) 261-7451

Website: [www.pasternack.com](http://www.pasternack.com) | E-Mail: [sales@pasternack.com](mailto:sales@pasternack.com)