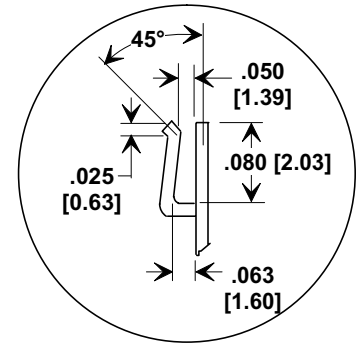
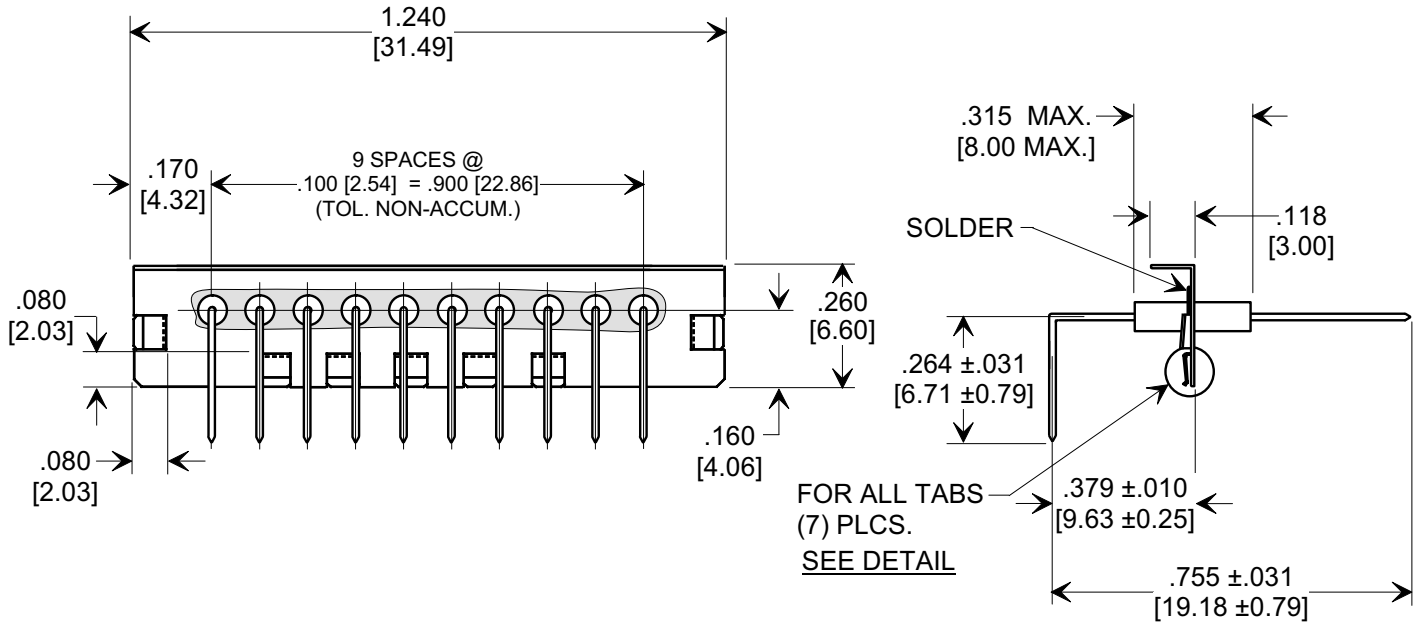
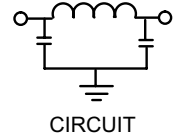
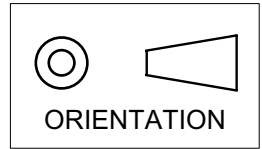


MARKETING SALES DRAWING
DIMENSIONS IN INCHES - DO NOT SCALE THIS DRAWING
DIMENSIONS IN METRIC - []

Electrical Testing
per Tusonix standard
test plans and Mil-Std-202
Test Methods.



DETAIL
SCALE: NONE

NOTE:

- Materials:
Plate: .012" ±.001" [0.30 ±0.025] Copper Alloy, Matte Tin Finish.
Leads: .025" [0.63] Square Copper Alloy, Gold over Nickel Finish.
- All lead dimensions are to Center Line (C).

5000 +100% -0%	100 VDC	5 A	7	14	27	41	53	66	70	70
CAP. (pF)	125° WORKING VOLTAGE	CURRENT	5 MHz	10 MHz	20 MHz	50 MHz	100 MHz	200 MHz	500 MHz	1 GHz
MINIMUM NO LOAD INSERTION LOSS (dB) AT 25°C PER MIL-STD-220										

X-2015 Rev-0	REVISION RECORD			20001207-3-17	--TOLERANCES-- Unless Otherwise Specified		Title		
	Original Release C.O.	WAS SK7638-001. SM 04-11-00	0		DECIMAL ± .010 [0.25]		PLATE ASSEMBLY		
	20000403-1-06	NOTE 1 REV'D COPPER ALLOY WAS BERYLLIUM COPPER & LEAD COPPER ALLOY WAS PHOSPHOR BRONZE L.E. 12-08-00	1		ANGLES ± 5°		Drawn	S.M. 04-20-99	Scale 2.5 X
					TUSONIX TUCSON, ARIZONA		Approved	B.M. 04-20-99	
					A		7810-010		