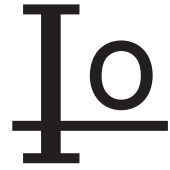


# 1N4933G THRU 1N4937G



1.0 AMP GLASS PASSIVATED FAST RECOVERY RECTIFIERS



## FEATURES

- \* Low forward voltage drop
- \* Low leakage current
- \* High reliability
- \* High current capability
- \* Glass passivated junction

## MECHANICAL DATA

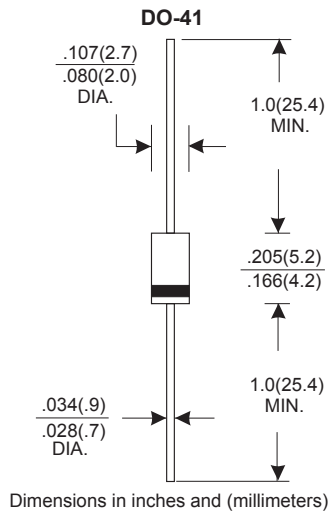
- \* Case: Molded plastic
- \* Epoxy: UL 94V-0 rate flame retardant
- \* Lead: Axial leads, solderable per MIL-STD-202, method 208 guaranteed
- \* Polarity: Color band denotes cathode end
- \* Mounting position: Any
- \* Weight: 0.34 grams

## VOLTAGE RANGE

50 to 600 Volts

## CURRENT

1.0 Ampere



## MAXIMUM RATINGS AND ELECTRICAL CHARACTERISTICS

Rating 25°C ambient temperature unless otherwise specified.  
Single phase half wave, 60Hz, resistive or inductive load.  
For capacitive load, derate current by 20%.

TYPE NUMBER	1N4933G	1N4934G	1N4935G	1N4936G	1N4937G	UNITS
Maximum Recurrent Peak Reverse Voltage	50	100	200	400	600	V
Maximum RMS Voltage	35	70	140	280	420	V
Maximum DC Blocking Voltage	50	100	200	400	600	V
Maximum Average Forward Rectified Current .375"(9.5mm) Lead Length at Ta=55°C	1.0					A
Peak Forward Surge Current, 8.3 ms single half sine-wave superimposed on rated load (JEDEC method)	30					A
Maximum Instantaneous Forward Voltage at 1.0A	1.2					V
Maximum DC Reverse Current Ta=25°C	5.0					μA
at Rated DC Blocking Voltage Ta=100°C	100					μA
Maximum Reverse Recovery Time (Note 1)	200					nS
Typical Junction Capacitance (Note 2)	15					pF
Operating and Storage Temperature Range T <sub>J</sub> , T <sub>STG</sub>	-65 — +175					°C

### NOTES:

- Reverse Recovery Time test condition: I<sub>F</sub>=1.0A, V<sub>R</sub>=30V.
- Measured at 1MHz and applied reverse voltage of 4.0V D.C.

# RATING AND CHARACTERISTIC CURVES (1N4933G THRU 1N4937G)

FIG.1-TYPICAL FORWARD CHARACTERISTICS

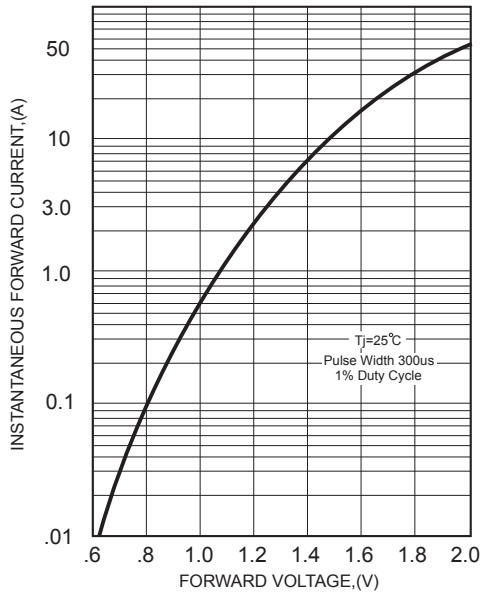


FIG.2-TYPICAL FORWARD CURRENT DERATING CURVE

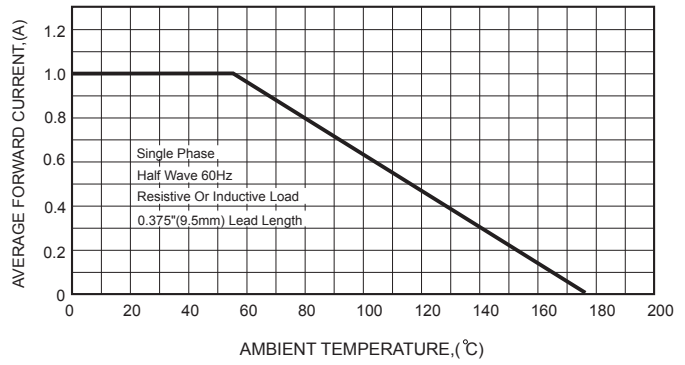


FIG.4-MAXIMUM NON-REPETITIVE FORWARD SURGE CURRENT

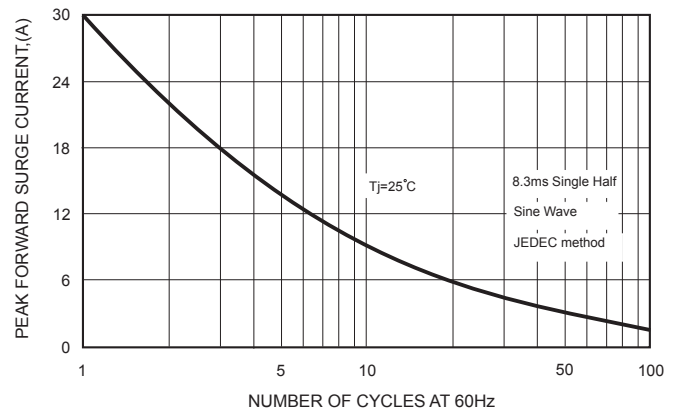
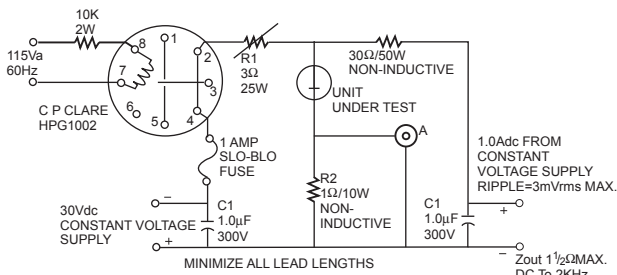


FIG.3- TEST CIRCUIT DIAGRAM AND REVERSE RECOVERY TIME CHARACTERISTICS



A- TEKTRONIX 545A, K PLUG IN PRE AMP P6000 PROBE OR EQUIVALENT  
 R1- ADJUSTED FOR 14 BETWEEN POINT 2 OF RELAY AND RECTIFIER INDUCTIVE=3.8 $\mu\text{H}$   
 R2- TEN 1W 10 $\Omega$  1% CARBON CORE IN PARALLEL  
 $T_A = 25 \pm 10^\circ\text{C}$  FOR RECTIFIER

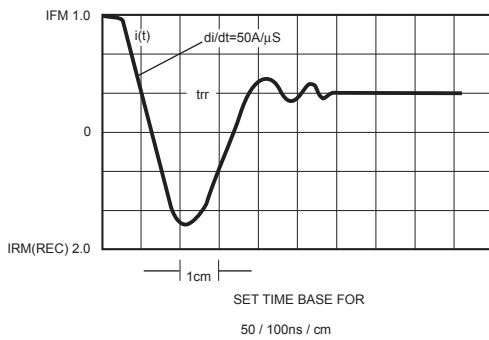


FIG.5-TYPICAL JUNCTION CAPACITANCE

