




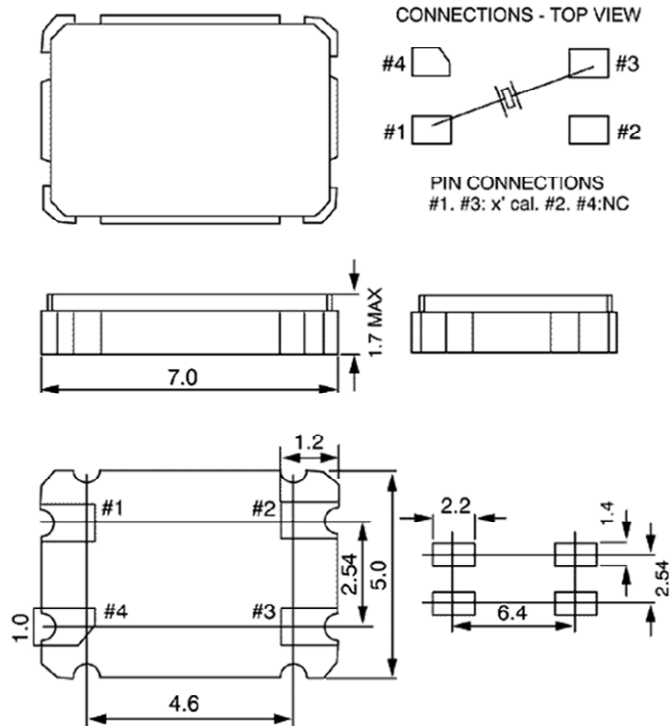
Product is compliant to RoHS directive   
and fully compatible with lead free assembly

**VXC1-1134-25M0000000**

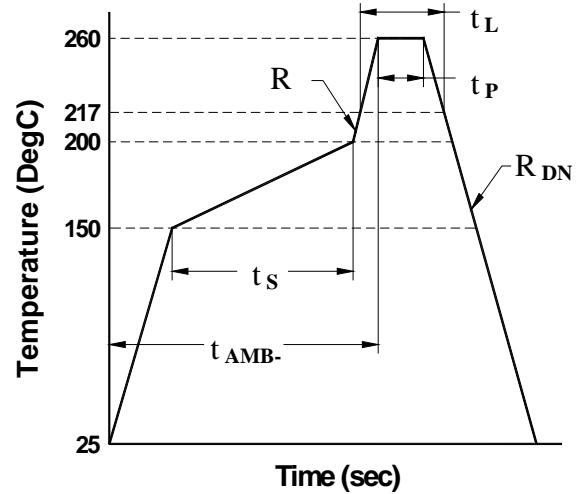
**7 x 5 x 1.7mm 4 pads**

<b>Package:</b>	<b>C1 = 7 x 5 x 1.7 mm 4 pads</b>
<b>Frequency:</b>	25.0000000MHz
<b>Mode:</b>	Fundamental
<b>Stability Options</b>	±30 ppm over -40°C to +85°C
<b>Load Capacitance (CL):</b>	10 pF
<b>STD Calibration Tolerance</b>	±30 ppm at +25°C
<b>ESR:</b>	40 Ohms max.
<b>Shunt Capacitance (Co):</b>	7 pF max
<b>Drive Level:</b>	10 to 500 uW
<b>Crystal Aging:</b>	< 5 PPM/ 1st year
<b>Standard Packaging:</b>	Tape & Reel (1,000 pc Minimum)
<b>P/N:</b>	<b>VXC1-1134-25M0000000</b>

## Package Drawing (mm)



## Typical Reflow Profile



**Table 1. Reflow Profile (IPC/JEDEC J-STD-020B)**

Parameter	Symbol	Value
PreHeat Time	$t_s$	60 sec Min, 200 sec Max
Ramp Up	$R_{UP}$	3 °C/sec Max
Time Above 217 °C	$t_L$	60 sec Min, 150 sec Max
Time To Peak Temperature	$t_{AMB-P}$	480 sec Max
Time At 260 °C (max)	$t_p$	10 sec Max
Time At 240°C (max)	$tp2$	60 sec Max
Ramp Down	$R_{DN}$	6 °C/sec Max

### Revision History

Date	Initial
10/30/2009	Initial

### For Additional Information Please Contact:



**USA:** Vectron International • 267 Lowell Road, Hudson, NH 03051

• Tel: 1-888-VECTRON-1 • Fax: 1-888-FAX-VECTRON

**EUROPE:** Landstrasse, D-74924, Neckarbischofsheim, Germany •

Tel: 49 (0) 7268 8010 • Fax: 49 (0) 7268 801281

**ASIA:** Vectron Asia Pacific Sales 1F~2F. No.8 Workshop No.308 Fenju Rd., WaiGaoQiao

Free Trade Zone, Pudong New Area Shanghai, China 200131

•Tel: 8621 50480777 • Fax: 8621 50481881

*Vectron International reserves the right to make changes to the product(s) and/or information contained herein without notice. No liability is assumed as a result of their use or application. No rights under any patent accompany the sale of any such product(s) or information.*