

*New Jersey Semi-Conductor Products, Inc.*


20 STERN AVE.  
 SPRINGFIELD, NEW JERSEY 07081  
 U.S.A.

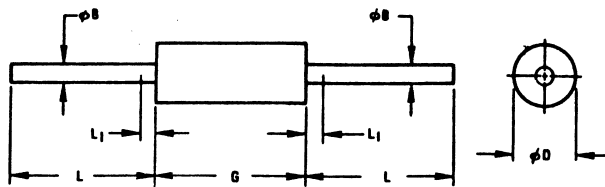
TELEPHONE: (973) 376-2922  
 (212) 227-6005  
 FAX: (973) 376-8960

1N3592  
**FAST RECTIFIER, I(O)/I(F) ≤ 100mA**

Description: Fast Rectifier, I(O)/I(F) ≤ 100mA

Manufacturer.....  
 Mil/High-Rel? (Y/N).....  
 I(out) (If AVG) Max..... 15m  
 VRRM..... 30  
 t(rr) (S)..... 40n  
   @If (test)..... 2.0m  
   @Ir (A)..... 200u  
 Vf Max..... 500m  
   @If (test)..... 15m  
 Ir @25°C..... 20u  
   @Volts (test) (V)..... 20  
 Ir @ Diff. Temp (A).....  
   @Temp (test) (°C).....  
 Mat..... Germanium  
 Oper. Temp (°C) Max..... 100-  
 Pkg Style..... DO-7  
 Surface Mounted (Y/N)..... N

▪ Storage Temperature  It(rms)

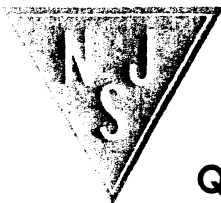


MILLIMETER DIMENSIONS ARE DERIVED FROM ORIGINAL INCH DIMENSIONS

SYMBOL	INCHES		MILLIMETERS		NOTES
	MIN.	MAX.	MIN.	MAX.	
$\phi B$	.018	.022	0.458	0.558	-
$\phi D$	.085	.107	2.16	2.71	1
G	.230	.300	5.85	7.62	1
L	1.000	-	25.40	-	-
$L_1$	-	.050	-	1.27	2

NOTES:

1. PACKAGE CONTOUR OPTIONAL WITHIN CYLINDER OF DIAMETER  $\phi D$  AND LENGTH  $G$ . SLUGS, IF ANY, SHALL BE INCLUDED WITHIN THIS CYLINDER BUT SHALL NOT BE SUBJECT TO THE MINIMUM LIMIT OF  $\phi D$ .
2. LEAD DIAMETER NOT CONTROLLED IN THIS ZONE TO ALLOW FOR FLASH, LEAD FINISH BUILD-UP, AND MINOR IRREGULARITIES OTHER THAN SLUGS.



**Quality Semi-Conductors**