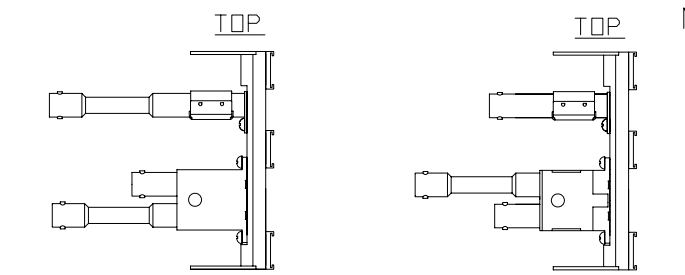
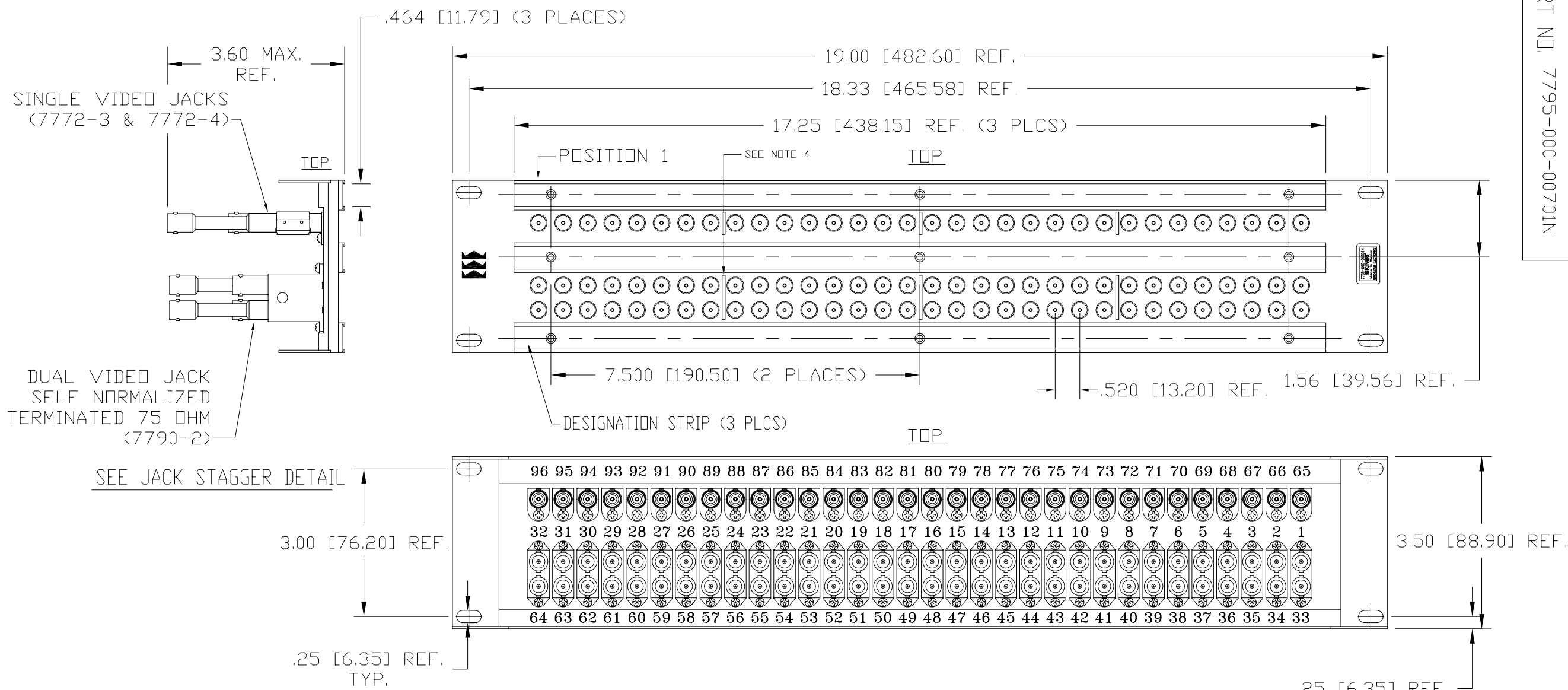


DASH NO.	M CODE	MADE FROM
----------	--------	-----------

REVISIONS	
ISSUE	CHANGES
A	ER12905 DRK 12/16/08
B	ER13158 PSM 01/09/09
C	ER13305 PSM 01/16/09
D	ER13305 PSM 01/20/09
E	ER13305 PSM 01/22/09

PART NO. 7795-000-00701N



ODD NUMBERED CIRCUIT      EVEN NUMBERED CIRCUIT

JACK STAGGER DETAIL

NOTES:

- PANEL:
  - MATERIALS: VIDEO PANEL: PHENOLIC, TYPE BIE; SCREWS: STAINLESS STEEL; ALL OTHER METAL PARTS: COLD ROLLED STEEL
  - FINISHES: SCREWS: PASSIVATE PER ASTM-A967; MODULAR PANEL ASSY: BLACK PAINT
- DUAL NORMAL TERMINATED MID-SIZE VIDEO JACKS (32) P/N 7790-2:
  - MATERIALS: BODY: ZINC (ZAMACK); CONTACTS: BER. COPPER, ASTM-B-196; INSULATING MATERIALS: TPX, DELRIN & TEFLON, ASTM-D-4894; HARDWARE: ZINC PLATED MACHINE SCREWS; ALL OTHER METAL PARTS: BRASS, ASTM-B16
  - FINISHES: CONTACTS: HARD GOLD PLATE PER ASTM-B488 OVER NICKEL PLATE PER QQ-N-290; ALL OTHER METAL PARTS: NICKEL PER QQ-N-290
  - ELECTRICAL CHARACTERISTICS: NOMINAL IMPEDANCE: 75 OHMS; TERMINATION RESISTANCE: 75 OHMS ±5°; FREQUENCY RANGE: DC TO 3.5 GHz
- SINGLE SELF TERM. VIDEO JACKS (16) P/N 7772-3 & (16) P/N 7772-4:
  - MATERIALS: INSULATORS-TPX, RT18 OR EQUIVALENT; SPRING CONTACT; BNC CONTACT F } BER. COP., ASTM-B-196; VIDEO CONTACT F } ALL OTHER METAL PARTS-BRASS, ASTM-B16
  - FINISHES: CENTER CONTACTS } GOLD PLATE PER ASTM-B488; SPRING CONTACT } OVER NICKEL PLATE PER QQ-N-290; ALL OTHER METAL PARTS: NICKEL PLATE PER QQ-N-290
  - ELECTRICAL CHARACTERISTICS: NOMINAL IMPEDANCE: 75 OHMS; FREQUENCY RANGE: DC - 3.0 GHz
- 3 IDENTIFICATION LINES POSITIONED BETWEEN THE 8TH & 9TH, 16TH & 17TH, AND 24TH & 25TH ROWS
- COMPLIANT WITH SMPTE 424M SPECIFICATION.

UNLESS OTHERWISE SPECIFIED  
 1. ALL DIMENSIONS IN INCHES [MILLIMETERS].  
 2. TOLERANCES:  
 .XXX ±.004      .XX ±.010  
 [.XXX ±.10]    [.XX ±.25]  
 FRACTIONS: X/Y ±.010 [.25]      ANGLES: ± 1°  
 ★ CRITICAL DIMENSIONS

CUSTOMER SALES DRAWING

SCALE 2:5	
APPROX SURFACE AREA	
USED ON	
REF:	
JACKFIELD, MID-SIZE, 32 CIRCUIT, 2 RU	
DRAWN DRK	DATE 12/16/08
DESIGN -	DATE -
APPR. WPM	DATE 12/23/08
<b>KINGS</b> by WINCHESTER ELECTRONICS	Winchester Electronics 62 Barnes Industrial Road North Wallingford, CT 06492
	B SIZE

SD7795-000-00701N