



Capacitors with Screw Terminals

B41560

Compact – 105 °C

B41580

Long-life grade capacitors

Applications

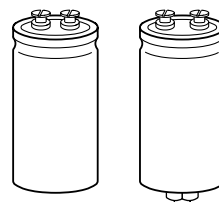
- General industrial electronics
- Professional power supplies

Features

- High reliability, extremely good electrical characteristics
- High *CU* product, i. e. extremely compact
- High ripple current capability
- All-welded construction ensures reliable electrical contact
- Version with low-inductance design available

Construction

- Charge-discharge proof, polar
- Aluminum case with insulating sleeve
- Poles with screw terminal connections
- Mounting with ring clips, clamps or threaded stud
- The bases of types with threaded stud are not insulated



B41560

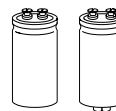
KAL0567-B

B41580



B41560 / B41580

Compact – 105 °C



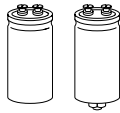
Specifications and characteristics in brief

Rated voltage U_R	25 ... 100 VDC	
Surge voltage U_S	$1,15 \cdot U_R$	
Rated capacitance C_R	1 500 ... 330 000 μ F	
Capacitance tolerance	$\pm 20 \% \triangleq M$	
Leakage current I_L (5 min, 20 °C)	$I_L \leq 0,3 \mu A \cdot \left(\frac{C_R}{\mu F} \cdot \frac{U_R}{V} \right)^{0,7} + 4 \mu A$	
Self-inductance ESL	Approx. 20 nH Capacitors with low-inductance design: $d \geq 64,3$ mm: approx. 13 nH	
Useful life 105 °C; U_R ; I_{-R} 85 °C; U_R ; I_{-max} 40 °C; U_R ; $2,2 \cdot I_{-R}$	> 3 000 h > 6 000 h > 250 000 h	Requirements: $\Delta C/C \leq \pm 45 \%$ of initial value $ESR \leq 3$ times initial specified limit $I_L \leq$ initial specified limit Failure percentage: $\leq 1 \%$ Failure rate: ≤ 40 fit ($\leq 40 \cdot 10^{-9}/h$) (for definition "fit", refer to chapter "Quality", page 62)
Voltage endurance test 105 °C; U_R	2 000 h	Post test requirements: $\Delta C/C \leq \pm 15 \%$ of initial value $ESR \leq 1,3$ times initial specified limit $I_L \leq$ initial specified limit
Vibration resistance	To IEC 60068-2-6, test Fc: displacement amplitude 0,75 mm, frequency range 10 to 55 Hz, acceleration max. 10 g, duration 3×2 h	
IEC climatic category	To IEC 60068-1: 40/105/56 (– 40 °C/+ 105 °C/56 days damp heat test)	
Detail specification	Similar to CECC 30301-810	
Sectional specification	IEC 60384-4	

Ripple current capability

Due to the ripple current capability of the contact elements, the following current upper limits must not be exceeded:

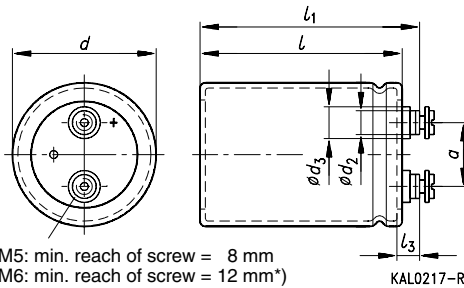
Capacitor diameter	$\leq 51,6$ mm	64,3 mm	76,9 mm
I_{-max}	30 A	40 A	50 A



B41560 / B41580
Compact – 105 °C

Dimensional drawings

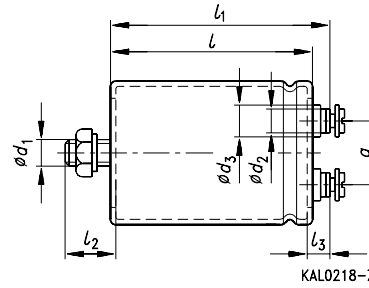
Type B41560
 Ring clip/clamp mounting



M5: min. reach of screw = 8 mm
 M6: min. reach of screw = 12 mm*)
 *) 8 mm for low-inductance design

KAL0217-R

Type B41580
 Threaded stud mounting



KAL0218-Z

Positive pole marking: +

Screw terminals with UNF threads are available upon request.

Dimensions and weights

Ter- mi- nal	Dimensions (mm) with insulating sleeve										Approx. wt. (g)
	d	$l \pm 1$	$l_1 \pm 1$	$l_2 \begin{smallmatrix} +0 \\ -1 \end{smallmatrix}$	l_3	d_1	$d_2 \text{ max}$	$d_3 \text{ max}$	$a \begin{smallmatrix} +0.2 \\ -0.4 \end{smallmatrix}$		
M 5	35,7+ 0/- 0,8	55,7	62,2	13	7,0+ 0,2/- 1	M 8	8,2	13,5	12,7	65	
M 5	35,7+ 0/- 0,8	80,7	87,2	13	7,0+ 0,2/- 1	M 8	8,2	13,5	12,7	105	
M 5	35,7+ 0/- 0,8	105,7	112,2	13	7,0+ 0,2/- 1	M 8	8,2	13,5	12,7	135	
M 5	51,6+ 0/- 0,8	80,7	87,2	17	7,0+ 0,2/- 1	M 12	8,2	13,5	22,2	220	
M 5	51,6+ 0/- 0,8	105,7	112,2	17	7,0+ 0,2/- 1	M 12	8,2	13,5	22,2	280	
M 5	64,3+ 0/- 0,8	105,7	112,2	17	7,0+ 0,2/- 1	M 12	8,2	13,5	28,5	440	
M 6	76,9+ 0/- 0,7	105,7	111,5	17	6,4+ 1,1/- 0,8	M 12	17,7	17,7	31,7	540	
M 6	76,9+ 0/- 0,7	143,2	149,0	17	6,4+ 1,1/- 0,8	M 12	17,7	17,7	31,7	840	

Dimensions are also valid for low-inductance design.

Packing

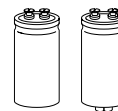
For ecological reasons the packing is pure cardboard.

Capacitor diameter d	Packing units (pieces)
35,7 mm	36
51,6 mm	22
64,3 mm	15
76,9 mm	12



B41560 / B41580

Compact – 105 °C



Special designs

- Low-inductance design

Ordering code:

Design	Identification in 3rd block of ordering code	Remark
Low inductance (13 nH)	M003	For capacitors with diameter $d \geq 64,3$ mm

Accessories

The following items are included in the delivery package, but are not fastened to the capacitors:

	Thread	Toothed washers	Screws/Nuts	Maximum torque
For terminals	M 5	A 5,1 DIN 6797	Cylinder-head screw M 5 × 8 DIN 84-4.8	2 Nm
	M 6	A 6,4 DIN 6797	Cylinder-head screw M 6 × 12 DIN 85-4.8	2,5 Nm
For mounting	M 8	J 8,2 DIN 6797	Hex nut BM 8 DIN 439	4 Nm
	M 12	J 12,5 DIN 6797	Hex nut BM 12 DIN 439	10 Nm

The following must be ordered separately:

Ring clips

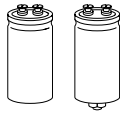
Clamps for capacitors with $d \geq 64,3$ mm

Insulating parts

B44030 (cf. page 169)

B44030 (cf. page 173)

B44020 (cf. page 166)



B41560 / B41580

Compact – 105 °C

Overview of available types

U_R (VDC)	25	40	63	100
C_R (μ F)	Case dimensions $d \times l$ (mm)			
1500				35,7 × 55,7
2 200				35,7 × 80,7
3 300				35,7 × 80,7
4 700			35,7 × 55,7	35,7 × 105,7
6 800			35,7 × 80,7	51,6 × 80,7
10 000		35,7 × 55,7	35,7 × 105,7	51,6 × 105,7
15 000	35,7 × 55,7	35,7 × 80,7	51,6 × 80,7	64,3 × 105,7
22 000	35,7 × 80,7	35,7 × 105,7	51,6 × 105,7	76,9 × 105,7
33 000	35,7 × 80,7	51,6 × 80,7	64,3 × 105,7	76,9 × 143,2
47 000	35,7 × 105,7	51,6 × 105,7	64,3 × 105,7	
68 000	51,6 × 80,7	51,6 × 105,7	76,9 × 105,7	
100 000	51,6 × 105,7	64,3 × 105,7	76,9 × 143,2	
150 000	64,3 × 105,7	76,9 × 105,7		
220 000	76,9 × 105,7	76,9 × 143,2		
330 000	76,9 × 143,2			

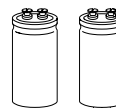
The capacitance and voltage ratings listed above are available in different cases upon request.

Other voltage and capacitance ratings are also available upon request.



B41560 / B41580

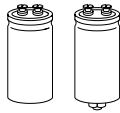
Compact – 105 °C



Technical data and ordering codes

U_R	C_R	Case dimensions	ESR_{max}	Z_{max}	I_{-max}	$I_{\sim max}$	I_{-R}	Ordering code ¹⁾
VDC	100 Hz 20 °C μF	$d \times l$ mm	100 Hz 20 °C m Ω	10 kHz 20 °C m Ω	100 Hz 40 °C A	100 Hz 85 °C A	100 Hz 105 °C A	
25	15 000	35,7 × 55,7	42	31	18	11	5,3	B415*0A5159M000
	22 000	35,7 × 80,7	29	22	25	15	7,4	B415*0A5229M000
	33 000	35,7 × 80,7	20	17	30	18	8,8	B415*0A5339M000
	47 000	35,7 × 105,7	16	13	30	23	11	B415*0A5479M000
	68 000	51,6 × 80,7	12	9,3	30	26	13	B415*0A5689M000
	100 000	51,6 × 105,7	9,4	7,6	30	30	15	B415*0A5100M000
	150 000	64,3 × 105,7	8,0	6,4	40	38	18	B415*0A5150M000 ²⁾
	220 000	76,9 × 105,7	7,0	5,6	50	40	20	B415*0A5220M000 ²⁾
40	330 000	76,9 × 143,2	6,4	5,1	50	50	24	B415*0A5330M000 ²⁾
	10 000	35,7 × 55,7	42	37	18	11	5,3	B415*0A7109M000
	15 000	35,7 × 80,7	29	26	25	15	7,4	B415*0A7159M000
	22 000	35,7 × 105,7	22	20	30	20	9,5	B415*0A7229M000
	33 000	51,6 × 80,7	15	13	30	23	11	B415*0A7339M000
	47 000	51,6 × 105,7	12	10	30	29	14	B415*0A7479M000
	68 000	51,6 × 105,7	10	8,4	30	30	15	B415*0A7689M000
	100 000	64,3 × 105,7	8,2	7,0	40	38	18	B415*0A7100M000 ²⁾
63	150 000	76,9 × 105,7	7,2	6,0	50	41	20	B415*0A7150M000 ²⁾
	220 000	76,9 × 143,2	6,4	5,4	50	49	24	B415*0A7220M000 ²⁾
	4 700	35,7 × 55,7	60	64	15	9,2	4,4	B415*0A8478M000
	6 800	35,7 × 80,7	44	46	20	12	6,0	B415*0A8688M000
	10 000	35,7 × 105,7	30	33	28	17	8,1	B415*0A8109M000
	15 000	51,6 × 80,7	22	21	30	19	9,1	B415*0A8159M000
	22 000	51,6 × 105,7	16	16	30	25	12	B415*0A8229M000
	33 000	64,3 × 105,7	12	12	40	31	15	B415*0A8339M000 ²⁾
63	47 000	64,3 × 105,7	10	9,4	40	35	17	B415*0A8479M000 ²⁾
	68 000	76,9 × 105,7	8,0	7,8	50	39	19	B415*0A8689M000 ²⁾
	100 000	76,9 × 143,2	6,6	6,6	50	48	23	B415*0A8100M000 ²⁾

Preferred types
 1) * "6" = for capacitors with ring clip/clamp mounting
 "8" = for capacitors with threaded stud
 2) For low-inductance design, see page 85.



B41560 / B41580

Compact – 105 °C

Technical data and ordering codes

U_R VDC	C_R 100 Hz 20 °C μF	Case dimensions $d \times l$ mm	ESR_{max} 100 Hz 20 °C m Ω	Z_{max} 10 kHz 20 °C m Ω	I_{max} 100 Hz 40 °C A	I_{max} 100 Hz 85 °C A	I_{R} 100 Hz 105 °C A	Ordering code ¹⁾
100	1 500	35,7 × 55,7	104	90	11	7,0	3,4	B415*0A9158M000
	2 200	35,7 × 80,7	70	77	16	9,9	4,7	B415*0A9228M000
	3 300	35,7 × 80,7	48	53	19	12	5,7	B415*0A9338M000
	4 700	35,7 × 105,7	35	39	26	16	7,5	B415*0A9478M000
	6 800	51,6 × 80,7	24	25	30	18	8,7	B415*0A9688M000
	10 000	51,6 × 105,7	17	18	30	24	11	B415*0A9109M000
	15 000	64,3 × 105,7	13	14	40	30	15	B415*0A9159M000 ²⁾
	22 000	76,9 × 105,7	10	11	50	35	17	B415*0A9229M000 ²⁾
	33 000	76,9 × 143,2	8,0	8,4	50	44	21	B415*0A9339M000 ²⁾

Preferred types

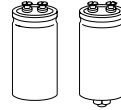
1) * "6" = for capacitors with ring clip/clamp mounting

"8" = for capacitors with threaded stud

2) For low-inductance design, see page 85.

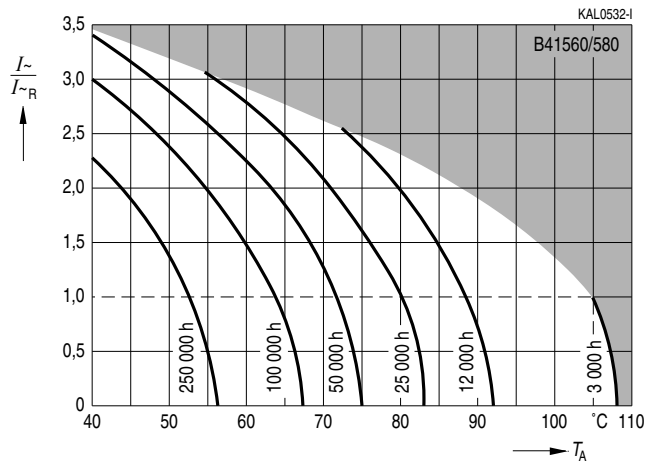


B41560 / B41580
Compact – 105 °C

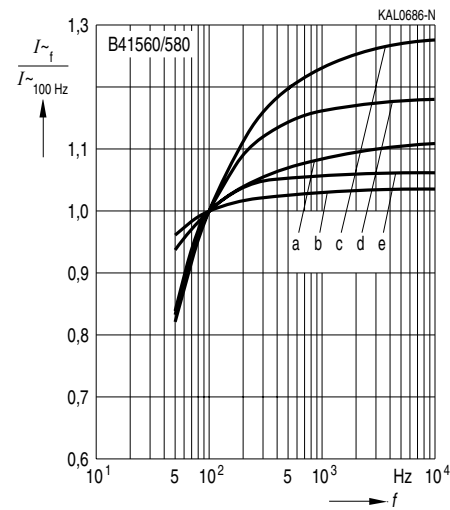


Useful life

depending on ambient temperature T_A under ripple current operating conditions¹⁾

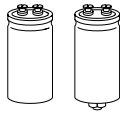


Frequency factor of permissible ripple current I_{\sim} versus frequency f



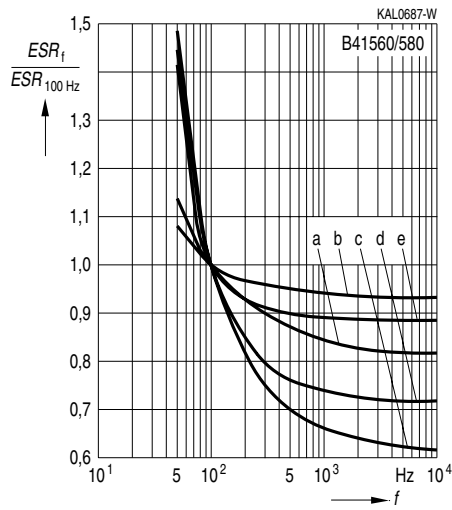
d (mm)	35,7	51,6	64,3	76,9
≤ 63 VDC	a	a	a	b
100 VDC	c	d	d	e

1) Refer to page 40 for an explanation on how to interpret the useful life graphs.



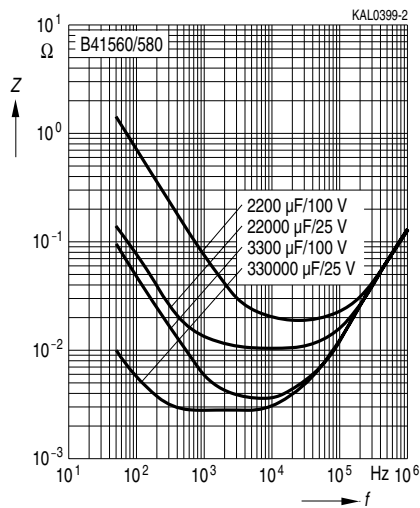
B41560 / B41580
Compact – 105 °C

Frequency characteristics of ESR
 Typical behavior



<i>d</i> (mm)	35,7	51,6	64,3	76,9
≤ 63 VDC	a	a	a	b
100 VDC	c	d	d	e

Impedance Z
 versus frequency *f*
 Typical behavior at 20 °C



Herausgegeben von EPCOS AG

Unternehmenskommunikation, Postfach 80 17 09, 81617 München, DEUTSCHLAND

☎ ++49 89 636 09, FAX (0 89) 636-2 26 89

© EPCOS AG 2002. Vervielfältigung, Veröffentlichung, Verbreitung und Verwertung dieser Broschüre und ihres Inhalts ohne ausdrückliche Genehmigung der EPCOS AG nicht gestattet.

Bestellungen unterliegen den vom ZVEI empfohlenen Allgemeinen Lieferbedingungen für Erzeugnisse und Leistungen der Elektroindustrie, soweit nichts anderes vereinbart wird.

Diese Broschüre ersetzt die vorige Ausgabe.

Fragen über Technik, Preise und Liefermöglichkeiten richten Sie bitte an den Ihnen nächstgelegenen Vertrieb der EPCOS AG oder an unsere Vertriebsgesellschaften im Ausland. Bauelemente können aufgrund technischer Erfordernisse Gefahrstoffe enthalten. Auskünfte darüber bitten wir unter Angabe des betreffenden Typs ebenfalls über die zuständige Vertriebsgesellschaft einzuholen.

Published by EPCOS AG

Corporate Communications, P.O. Box 80 17 09, 81617 Munich, GERMANY

☎ ++49 89 636 09, FAX (0 89) 636-2 26 89

© EPCOS AG 2002. Reproduction, publication and dissemination of this brochure and the information contained therein without EPCOS' prior express consent is prohibited.

Purchase orders are subject to the General Conditions for the Supply of Products and Services of the Electrical and Electronics Industry recommended by the ZVEI (German Electrical and Electronic Manufacturers' Association), unless otherwise agreed.

This brochure replaces the previous edition.

For questions on technology, prices and delivery please contact the Sales Offices of EPCOS AG or the international Representatives.

Due to technical requirements components may contain dangerous substances. For information on the type in question please also contact one of our Sales Offices.