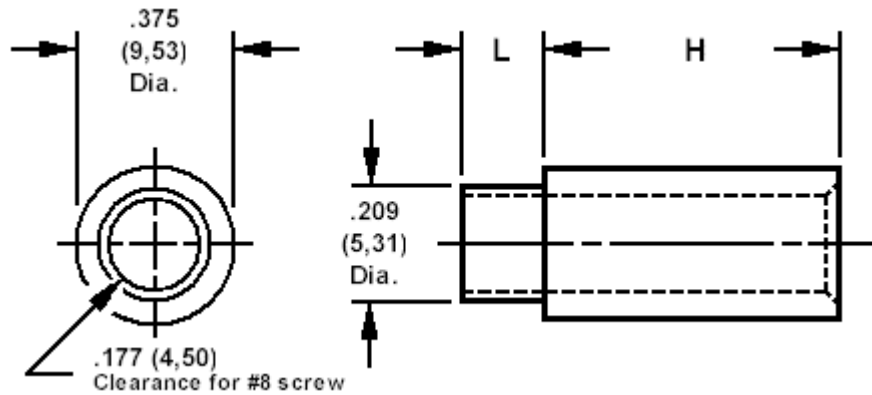


## 350-1499 Spacer/Stand-off, round, thru hole, swage mount



### How to order code

**350-1499-XX-YY-00**

Basic Part No XX = H & L dimensions, YY = Plating Finish

DIMENSIONS (XX)						
Basic Part #	(XX)				H	Swage Anvil
350-1499	-01	-09	-17	-25	.125 (3,18)	A
	-02	-10	-18	-26	.188 (4,78)	A
	-03	-11	-19	-27	.250 (6,35)	B
	-04	-12	-20	-28	.375 (9,53)	B
	-05	-13	-21	-29	.500 (12,70)	C
	-06	-14	-22	-30	.625 (15,88)	C
	-07	-15	-23	-31	.750 (19,05)	D
	-08	-16	-24	-32	1.000 (25,40)	D
<b>L</b>	.078 (1,98)	.109 (2,77)	.141 (3,58)	.172 (4,37)		
<b>Board Thickness</b>	.031 (0,79)	.062 (1,59)	.094 (2,38)	.125 (3,18)		

MATERIALS			
Component	Material	Finish (YY)	
		-02	-07
Spacer/Stand-Off	Brass	Nickel	Cadmium (plus Chromate)

SWAGE TOOLING		
Recommended Swaging Tools:-		
Punch		435-6612-01-00-00
Anvil	A	435-6416-01-00-00
	B	435-6416-02-00-00
	C	435-6416-03-00-00
	D	435-6416-04-00-00