

NOTES:

- 1 FOR SIGNAL CONTACT THRU HOLE REQUIREMENTS SEE THRU HOLE PLATING VIEW.
- 2 FOR BOARD LOCK STANDOFF THRU HOLE REQUIREMENTS SEE THRU HOLE PLATING VIEW.
- 3 OPTIONAL STANDOFF AVAILABLE WITHOUT BOARD LOCK JUST #4-40 THRU HOLE. CONSULT SALES FOR FURTHER INFORMATION.
- 4 .0078/0.2 MAXIMUM GAP PERMISSIBLE TO PC BOARD.
- 5 OVERALL HEIGHT FROM TOP OF P.C.B. TO TOP OF SHELL ASSUMING .0078 MAX. GAP PER NOTE 4

SPECIFICATIONS

MATERIALS & FINISHES

- 1 Insert ————— Material: Thermoplastic, glass filled. Rated UL 94V-0.
- 2 Shell ————— Material: Pure Tin Plated Cold Rolled Steel
- 3 #4-40 Standoffs ————— Material: Pure Tin Plated Copper Alloy
- 4 Signal Contacts ————— Material: Copper Alloy
Finish: Gold over Nickel, Pure Tin on Tail

PERFORMANCE CHARACTERISTICS

- Current Rating ————— 3 Amps
- Insulation Resistance ————— ≥ 5000 Mohm
- Dielectric Strength ————— 50 kv/mm
- Contact Resistance ————— ≤ 10 mOhm
- Test Voltage ————— 1000V
- Operating Temperature ————— -67°F to 221°F
(-55°C to 105°C)

COMPLIANT CONTACT PERFORMANCE

SIGNAL CONTACTS

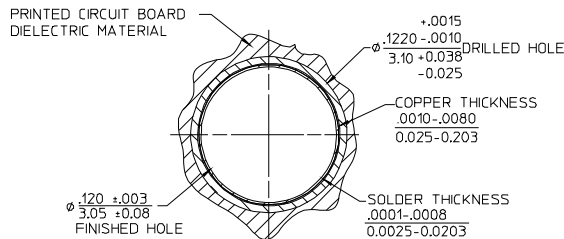
- Max Board Insertion ————— 15 lbs max/contact
- Min Board Retention ————— 5 lbs min/contact

STANDOFFS

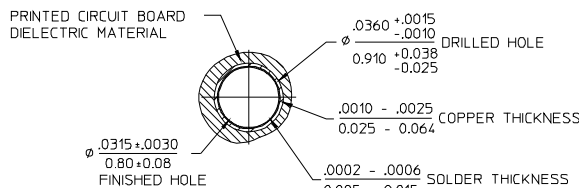
- Max Board Insertion ————— 150 lbs max/standoff
- Min Board Retention ————— 30 lbs min/standoff

CUSTOMER TOOLING REQUIRED

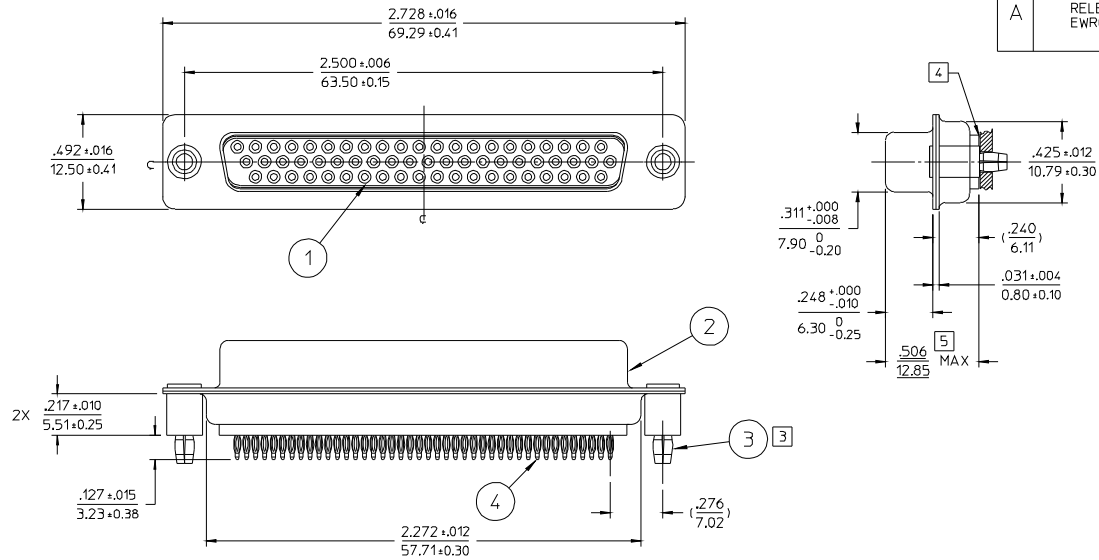
DESCRIPTION	SEATING TOOL CATALOG No.	INSTRUCTION SHEET	DRAWING NUMBER
INSERTION TOOL	107-43975-01	43543	43975



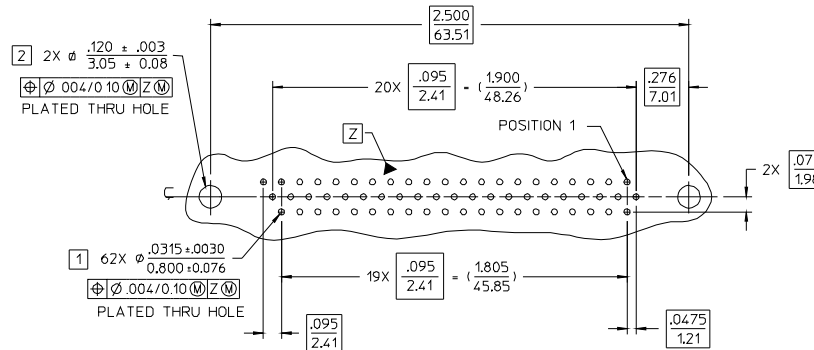
2 THRU HOLE PLATING
SCALE 6:1



1 THRU HOLE PLATING
SCALE 10:1



CATALOG No. 3891462S11K5572 SHOWN



RECOMMENDED PC BOARD REQUIREMENTS
(COMPONENT SIDE OF BOARD SHOWN)

PER ASME Y14.5M-1994 UNLESS OTHERWISE SPECIFIED: DIMENSIONS ARE IN INCHES OR INCHES/MM TOLERANCES: DECIMALS .XX + N/A .XXX ± .007/0.18 ANGLES ± 1/2° SCALE: 1:1		Litton Winchester 400 Park Road Reticon Watertown, Connecticut 06795	
CUSTOMER DRAWING		TITLE 62 PIN HIGH DENSITY, SHIELDED, STRAIGHT PRESS-FIT RECEPTACLE WITH STANDOFFS	
DRAWN DW 07/24/08	DATE 07/24/08	APPROVED DATE WPM 07/24/08	APPROVED DATE XXX XX/XX/XX
APPROVED DATE VBH 07/24/08		APPROVED DATE XXX XX/XX/XX	A 30693 SHT. 1 OF 1 REV. A