

2878- * * * * *

MATERIAL CODE (.271/.0106 THK)

A=BRASS
B=PHOS BRONZE

WINDING SPEC.

A=PER WINDING DETAIL A
B=PER WINDING DETAIL B
L=LOOSE

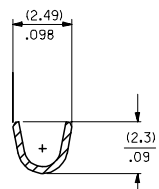
PLATING CODE

*(P909) OVERALL HOT TIN DIP: 2.54 MICROMETERS MIN
(550) SELECT GOLD: 0.38 MICROMETERS MIN.
OVERALL GOLD FLASH: 0.05 MICROMETERS MIN.
OVERALL NICKEL UNDERPLATE: 0.76 MICROMETERS MIN.
(555) SELECT GOLD: 0.38 MICROMETERS MIN.
OVERALL NICKEL UNDERPLATE: 0.76 MICROMETERS MIN.

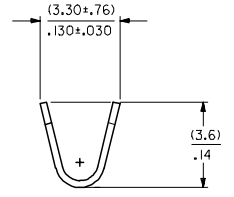
OPTION CODE

A= OVERALL PLTGS, AND STD GOLD LOC
B= LARGER SELECT GOLD LOCATION

*THE PRIMARY SHIPPING CARTON WILL BE LABELED *COMPLIANT TO ROHS DIRECTIVE 2002/95/EC AND ELV ANNEX II OF DIRECTIVE 2000/53/EC.* CARTONS WITHOUT THIS LABEL MAY CONTAIN PRODUCT WITH TIN-LEAD PLATING.



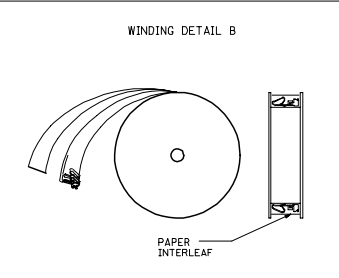
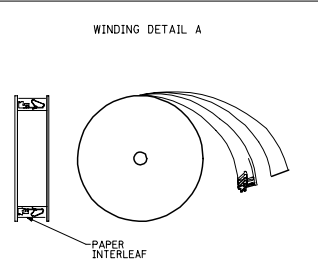
SECTION A-A
BACKGROUND OMITTED



BACKGROUND OMITTED

NOTES:

1. CRIMP ACCEPTS 18 TO 20 GA. WIRE WITH (2.79)/.110 MAX. INSUL. DIA. WHEN USED WITH 2574 CONNECTOR.
(2.54)/.100 MAX. INSUL. DIA. WHEN USED WITH 2139 CONNECTOR
CRIMP ACCEPTS (3.00)/.118 MAX. INSUL. DIA. WITH SPECIAL TOOLING.
2. DIMENSIONS GIVEN ACROSS CENTERLINES ARE SYMMETRICAL ABOUT THOSE CENTERLINES WITHIN HALF THE TOTAL TOLERANCE.
3. (.86±.05)/.034±.002 IS AN OPTIONAL DESIGN.
4. THIS PART CONFORMS TO PRODUCT SPEC. 08-50.



CHANGE TO ME10 EC NO: UCP2005-0930 DRW: WADPATINDL 2004/11/16 CHK: KS-SAMEC 2004/11/02 APPR: MMARGILLIS 2004/11/02 AM	QUALITY SYMBOLS ▽=0 ▽=0	GENERAL TOLERANCES (UNLESS SPECIFIED) <table border="1"> <tr> <th></th> <th>mm</th> <th>INCH</th> </tr> <tr> <td>4 PLACES</td> <td>± .13</td> <td>± .005</td> </tr> <tr> <td>3 PLACES</td> <td>± .13</td> <td>± .010</td> </tr> <tr> <td>2 PLACES</td> <td>± .25</td> <td>± .010</td> </tr> <tr> <td>1 PLACE</td> <td>± .25</td> <td>± .010</td> </tr> <tr> <td colspan="3">ANGULAR ±1/2°</td> </tr> </table>		mm	INCH	4 PLACES	± .13	± .005	3 PLACES	± .13	± .010	2 PLACES	± .25	± .010	1 PLACE	± .25	± .010	ANGULAR ±1/2°			DIMENSION STYLE IN/MM	SCALE DESIGN UNITS INCH	THIRD ANGLE PROJECTION
		mm	INCH																				
	4 PLACES	± .13	± .005																				
	3 PLACES	± .13	± .010																				
2 PLACES	± .25	± .010																					
1 PLACE	± .25	± .010																					
ANGULAR ±1/2°																							
DRAWN BY COMSTOCK	DATE 11/29/88	TITLE TERMINAL, DBL. CANTILEVER KK CRIMP TYPE BIFURCATED	MATERIAL NO. SEE CHART	DOCUMENT NO. SD-2878	SHEET NO. 1 OF 2																		
DRAFT WHERE APPLICABLE MUST REMAIN WITHIN DIMENSIONS	SIZE D	THIS DRAWING CONTAINS INFORMATION THAT IS PROPRIETARY TO MOLEX INCORPORATED AND SHOULD NOT BE USED WITHOUT WRITTEN PERMISSION	MOLEX INCORPORATED	MOLEX INCORPORATED	MOLEX INCORPORATED																		

2878-A-A(*)*		2878-B-A(*)*		2878-A-B(*)*															
PART NO.	ENG. NO.	PART NO.	ENG. NO.	PART NO.	ENG. NO.	PART NO.	ENG. NO.	PART NO.	ENG. NO.	PART NO.	ENG. NO.	PART NO.	ENG. NO.	PART NO.	ENG. NO.	PART NO.	ENG. NO.	PART NO.	ENG. NO.
08-50-0115	2878-A-A(P909)B			08-55-0138	2878-A-B(555)B														
08-50-0116	2878-A-A(P909)L				2878-A-B(555)L														
		08-52-0126	2878-B-A(P909)B																
		08-52-0127	2878-B-A(P909)L																
		08-65-0118	2878-B-A(555)B																
		08-65-0119	2878-B-A(555)L																
		08-58-0127	2878-B-A(550)B																
		08-58-0128	2878-B-A(550)L																

CHANGE TO ME10 EC NO: UCP2005-0930 DRAWN: DRATINDL 2004/11/16 CHKCD: SAMEC 2004/11/02 APPR: WARGULLIS 2004/11/02 AM	QUALITY SYMBOLS ▽=0 ▽=0	GENERAL TOLERANCES (UNLESS SPECIFIED)		DIMENSION STYLE IN/MM		SCALE INCH	DESIGN UNITS INCH	<input checked="" type="checkbox"/> THIRD ANGLE <input type="checkbox"/> PROJECTION	
		4 PLACES ± --- ± --- 3 PLACES ± --- ± --- 2 PLACES ± --- ± --- 1 PLACE ± --- ± ---	mm INCH	DRAWN BY COMSTOCK	DATE 11/04/88	TITLE TERMINAL,DBL,CANTILEVER KK CRIMP TYPE BIFURCATED			
		ANGULAR ±1/2°		CHECKED BY PATEL	DATE 11/04/88	MATERIAL NO. LENZ			
		DRAFT WHERE APPLICABLE MUST REMAIN WITHIN DIMENSIONS		APPROVED BY LENZ	DATE 11/04/88	DOCUMENT NO. SD-2878		SHEET NO. 2	