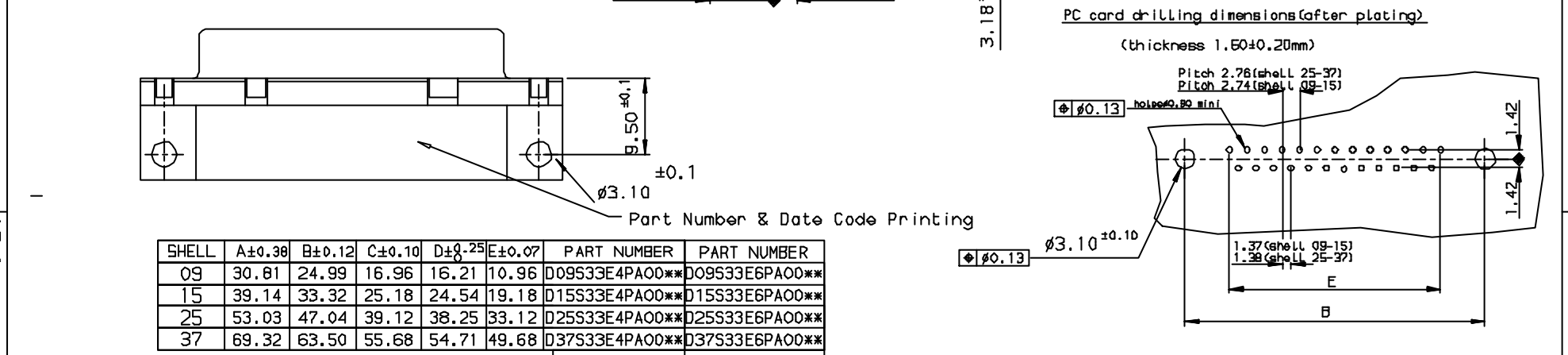
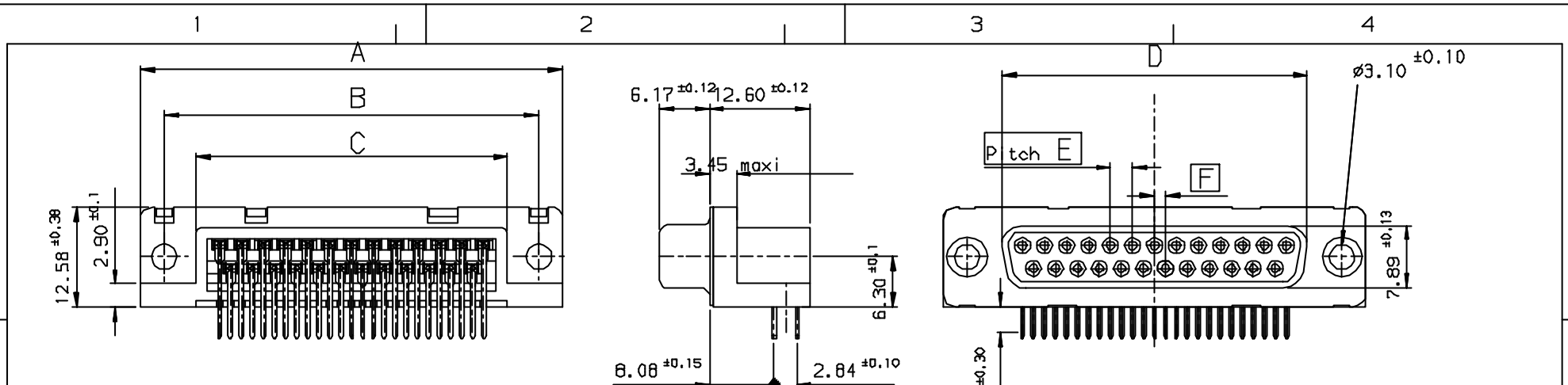


Tous droits réservés. Reproduction ou communication de ces plans interdite sans autorisation écrite de la Direction de l'Ingénierie. Droits de reproduction FCI.

**FCI**

All rights strictly reserved. Reproduction or use in third parties in any form without the prior written authorization of the Engineering Department of FCI. Copyright FCI.



SHELL	A±0.38	B±0.12	C±0.10	D±0.25	E±0.07	PART NUMBER	PART NUMBER
09	30.81	24.99	16.96	16.21	10.96	D09S33E4PA00**	D09S33E6PA00**
15	39.14	33.32	25.18	24.54	19.18	D15S33E4PA00**	D15S33E6PA00**
25	53.03	47.04	39.12	38.25	33.12	D25S33E4PA00**	D25S33E6PA00**
37	69.32	63.50	55.68	54.71	49.68	D37S33E4PA00**	D37S33E6PA00**

Gold Flash 0,75 µ gold

LF FOR LEAD FREE

**REQUIREMENTS**

**Technical characteristics:**  
 Shell: steel tin plated  
 Insulators: self-extinguishing thermoplastic, UL class 94V0  
 Contacts: phosphor bronze, gold (for thickness see table)  
 over 2 µ mini nickel on active area and flash to 1.5 µ maxi SnPb  
 over 1 µ mini nickel on termination.

Cycles: 200 min for plating 4.  
 Cycles: 500 min for plating 6.

**Electrical characteristics:**

max. current rating: 5A  
 Test voltage: 1000V  
 Rated voltage: 300V  
 Contact resistance: <15ma  
 Shell resistance: <5ma  
 Insulation resistance: >5000Ma

**Climatic characteristics:**  
 Operating temperature range: -55°C +125°C

**Dimensions:**  
 in accordance with MIL-C-24308

d	27/7/05	LEAD FREE DETAILS ADDED
INDEX	DATE	REVISION DESCRIPTION

Ltr	Ecn no	Dr	date
d	105-0124	JS	27/7/05

FOR ROHS DETAILS REFER DWG. NO. C01-8646-0000

		✓ Tolerance LINEAR ±0.1 ANGULAR ±1°		Projection		MM	
Dr JOHN SLEEBA		24/10/89		Product Family D-SUB		Size A3	
Eng GEORGE VJ		24/10/89		Spec ref		Scale	
Chr GEORGE VJ		27/7/05		Material		ECN	
Appr K Somasundaram		27/7/05					
<b>FCI</b>		Title SOCKET CONNECT, DELTA D RIGHT ANGLED spill without accessories.		Dwg no C01-8646-0010		Rev. d	
Catalog no DELTA-D		CUSTOMER COPY		Sheet 1 of 1			