

# F Series Miniature ROTA-SLIDE® Rotary Switches

## Features/Benefits

- Multi-pole and multi-position
- Panel and PCB mounting
- Positive detent
- Value added capability
- RoHS Compliant

## Typical Applications

- Small appliances
- Testing fixtures
- Safety equipment



## Specifications

CONTACT RATING: Q contact material: 4 AMPS @ 125 V AC or 28 V DC; 2 AMPS @ 250 V AC (UL/CSA). See page L-40 for additional ratings.

ELECTRICAL LIFE: 10,000 make-and-break cycles at full load.

CONTACT RESISTANCE: Below 10 m Ω typ. initial @ 2-4 V DC, 100 mA, for both silver and gold plated contacts.

INSULATION RESISTANCE: 10<sup>9</sup> Ω min.

DIELECTRIC STRENGTH: 1,000 Vrms min. @ sea level.

INDEXING: 45° or 90° -one contact models; two contact models, 4 pos. max. Models with common terminal -90°, 4 pos. max.

OPERATING & STORAGE TEMPERATURE: -30°C to 65°C

## Materials

HOUSING & BUSHING: 6/6 Nylon (UL 94V-2).

ACTUATOR: 6/6 nylon (UL 94V-2).

CONTACTS: Q contact material: Copper, silver plated. See page K-40 for additional contact materials.

TERMINALS: Q contact material: Copper, silver plated. See page K-39 for additional contact materials.

CONTACT SPRING: Music wire or stainless steel.

MOUNTING NUT: Brass, nickel plated.

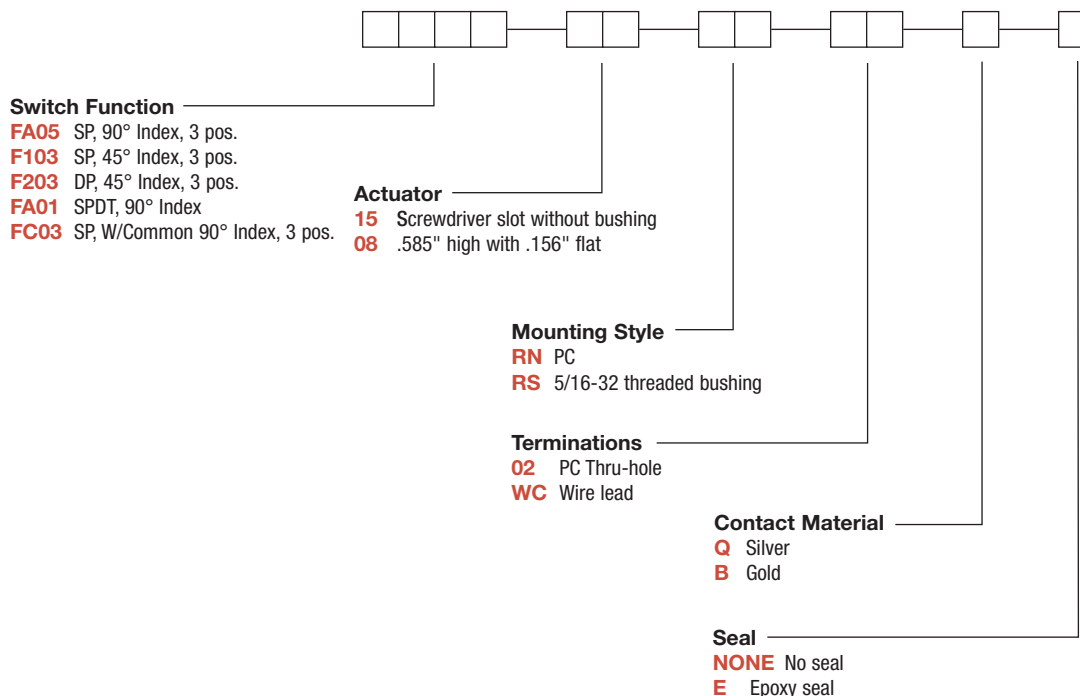
TERMINAL SEAL: Epoxy.

**NOTE:** Any models supplied with Q or B contact material are RoHS compliant.

**NOTE:** Specifications and materials listed above are for switches with standard options. For information on specific and custom switches, consult Customer Service Center.

## Build-A-Switch

To order, simply select desired option from each category and place in the appropriate box. Available options are shown and described on pages K-34 thru K-36. For additional options not shown in catalog, consult Customer Service Center.



Dimensions are shown: mm  
Specifications and dimensions subject to change



K

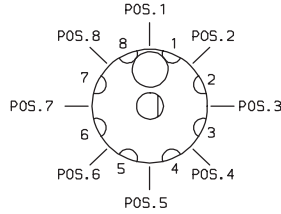
Rotary

# F Series Miniature ROTA-SLIDE® Rotary Switches

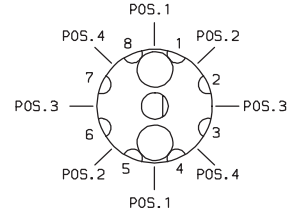
## SWITCH FUNCTION

45° INDEXING			
NO. POLES	MODEL NO.	SWITCH FUNCTION	TERMINALS
SP	<b>F103</b>	3 Position	8-1-2-3*
DP	<b>F203</b>	3 Position	All Terminals

### 45° INDEXING SCHEMATICS



F1XX MODELS



F2XX MODELS

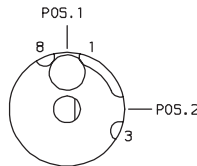
Break-before-make contacts. Terminal numbers are molded on bottom of housing. Actuators are shown in position 1.

**NOTE:** \*Switches with '02' PC terminations have additional terminal no. 5 as switch support only. This terminal is not connected electrically inside switch.

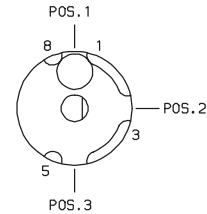
F1XX, F2XX models: No common terminal is present. Switching function is provided by movable contacts shorting adjacent pairs of stationary contacts.

90° INDEXING			
NO. POLES	MODEL NO.	SWITCH FUNCTION	TERMINALS
SP	<b>FA01</b>	SPDT	8-1-3
	<b>FA05</b>	3 Position	8-1-3-5
SP WITH COMMON	<b>FC03</b>	3 Position	C-1,C-2,C-3

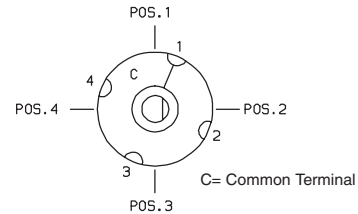
### 90° INDEXING SCHEMATICS



FA01 MODEL



FA05 MODEL



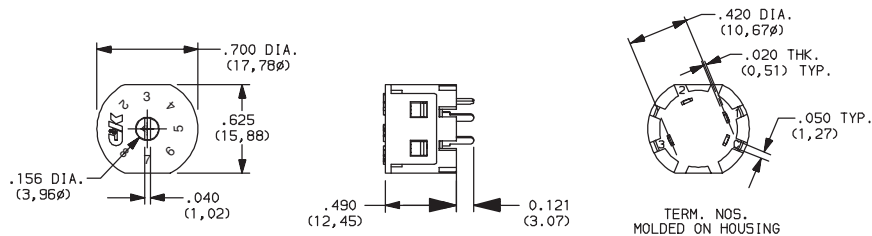
FCXX MODEL

Break-before-make contacts. Terminal numbers are molded on bottom of housing. Actuators are shown in position 1.

FCXX models: Common terminal is present.

F1XX, F2XX models: No common terminal is present. Switching function is provided by movable contacts shorting adjacent pairs of stationary contacts.

**NOTE:** \*Switches with '02' PC terminations have additional terminal no. 5 as switch support only. This terminal is not connected electrically inside switch.



Part number show: FC0315RN02Q



Dimensions are shown: Inch (mm)

Specifications and dimensions subject to change



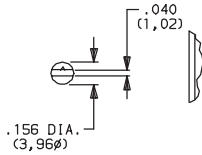
K

Rotary

# F Series Miniature ROTA-SLIDE® Rotary Switches

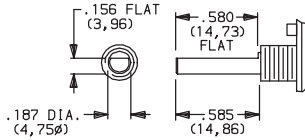
## ACTUATOR

**15** SCREWDRIVER SLOT WITHOUT BUSHING



Shown with 'RN' mounting style; not available with 'RS' mounting style or FCXX models.

**08** .585" HIGH WITH .156" FLA



Must be ordered with 'RS' mounting style.

## MOUNTING STYLE

**RN** PC



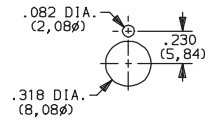
PC mount, no bushing, position numbers molded standard. Shown with '15' actuator; not available with '08' actuator or FCXX models.

**RS** 5/16-32 THREADED BUSHING



Panel mount, with 5/16 in.-32 threaded bushing. Mounting nut (P/N 175020201) included. Must be ordered with '08' actuator option.

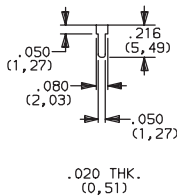
**PANEL MOUNTING**



5/16 IN. BUSHING

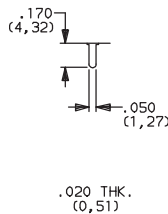
## TERMINATIONS

**02** PC THRU-HOLE



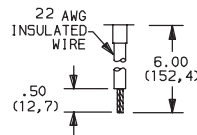
**F1XX, F2XX & FAXX Models**

**02** PC THRU-HOLE



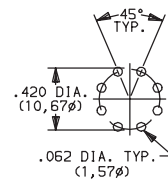
**FCXX Models**

**WC** WIRE LEAD



Black wire standard, other colors and lengths available, consult Customer Service Center. UL style 1015.

**PC MOUNTING**



Dimensions are shown: mm  
Specifications and dimensions subject to change



K

Rotary

# F Series Miniature ROTA-SLIDE® Rotary Switches

## CONTACT MATERIAL


OPTION CODE	CONTACT AND TERMINAL MATERIAL	RATING	
<b>Q</b>	SILVER <sup>2</sup>	POWER	4 AMPS @ 125 V AC or 28 V DC; 2 AMPS @ 250 V AC (UL/CSA).
<b>B</b>	GOLD <sup>1</sup>	LOW LEVEL/DRY CIRCUIT	0.4 VA MAX. @ 20 V AC or DC MAX.

\* Note: See Technical Data section of this catalog for RoHS compliant and compatible definition and specifications.

<sup>1</sup> CONTACTS & TERMINALS: Copper, with gold plate over nickel plate.

<sup>2</sup> CONTACTS & TERMINALS: Copper, silver plated (standard with all termination options).

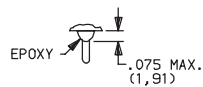
**NOTE:** Any models supplied with Q or B contact material are RoHS compliant.

All models  with all options when ordered with 'Q' contact material.

## SEAL

**NONE** NO SEAL

**E** EPOXY SEAL



Not available on FCXX models.



**K**

Rotary



Third Angle  
Projection

Dimensions are shown: Inch (mm)  
Specifications and dimensions subject to change