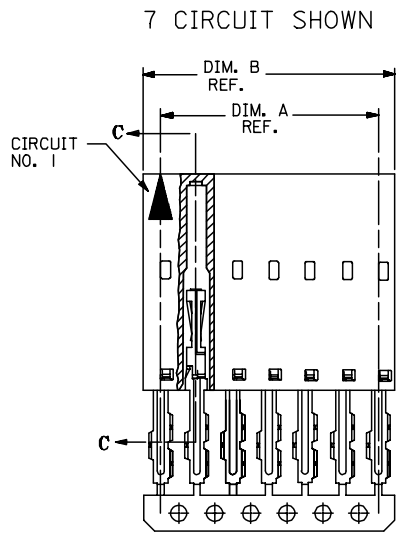
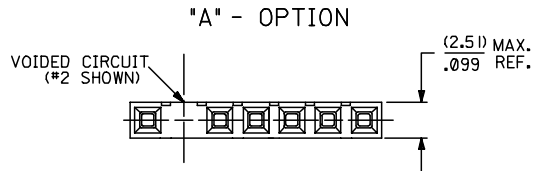


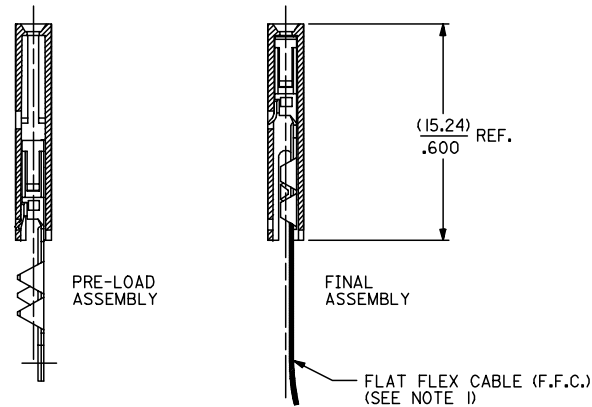
CKT. SIZE	VOID. CKT.	EDP. NO.	A	B
7	2	015-47-9079	(15.24) .600	(17.75) .699
16	2	015-47-9169	(38.10) 1.500	(40.61) 1.599

NOTES:

- 1) PRE LOADED ASSEMBLY TO BE USED WITH (0.30)/.012 MAX. THICK FLAT FLEX CABLE WITH (1.57)/.062 WIDE COPPER CONDUCTORS ON (2.54)/.100 CENTERS OR, (0.13)/.005 - (0.28)/.011 THICK MYLAR WITH (1.02)/.040 - (1.65)/.065 WIDE SILVER INK CONDUCTORS ON (2.54)/.100 CENTERS.
- 2) STANDARD PACKING PER PK-70873-0001 SHALL BE USED.
- 3) TWO (2) CIRCUIT ASSEMBLIES SUPPLIED AS GROUPED PAIRS.
- 4) PART MATES WITH ALL MOLEX .100 CENTERLINE HEADERS WITH (0.64)/.025 SQ. PINS, (8.13)/.320 TO (5.08)/.200 LONG.
- 5) PARTS STACKABLE SIDE TO SIDE ON (2.54)/.100 CENTERS.
- 6) PARTS CONFORM TO CLASS B OF COSMETIC SPECIFICATION PS-45499-002.



SECTION C-C



HOUSING MATERIAL : GLASS FILLED POLYESTER, UL 94V-0
 CONTACT MATERIAL : PHOSPHOR BRONZE
 PLATING : .000150 MICROINCH MINIMUM TIN OVER NICKEL PLATE.

ADD TOLERANCE FC NO: UCP2007-2849 DRAWN: JORGAN 2007/05/18 CHKD: MS BARRA 2007/05/21 APPR: SMILLER 2007/05/21 REV:	QUALITY SYMBOLS ▽=0 ▽=0	GENERAL TOLERANCES (UNLESS SPECIFIED)		DIMENSION STYLE MM/IN		SCALE 4:1	DESIGN UNITS INCH	THIRD ANGLE PROJECTION			
		4 PLACES ± --- ± ---	3 PLACES ± --- ± .010	DRAWN BY JWG	DATE 1986/07/21	TITLE VOIDED CIRCUIT ASSEMBLY CONNECTOR, F.F.C. FEMALE SINGLE ROW, (2.54)/.100					
		2 PLACES ± 0.25 ± .015	1 PLACE ± 0.38 ± ---	CHECKED BY RSF	DATE 1986/07/21	APPROVED BY DB					
		ANGULAR ±1/2°		MATERIAL NO. SEE TABLE		DOCUMENT NO. SDA-70430-9001		SHEET NO. 1 OF 1			
DRAFT WHERE APPLICABLE MUST REMAIN WITHIN DIMENSIONS				THIS DRAWING CONTAINS INFORMATION THAT IS PROPRIETARY TO MOLEX INCORPORATED AND SHOULD NOT BE USED WITHOUT WRITTEN PERMISSION							