

FEATURES AND SPECIFICATIONS

Features and Benefits

- 5mm (.197") pitch single row connector
- Designed for high current
- GWT 850°C (domestic appliances)

Reference Information

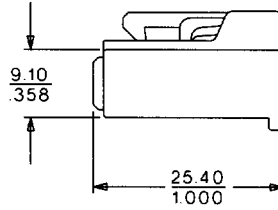
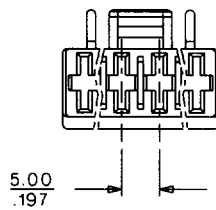
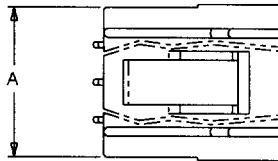
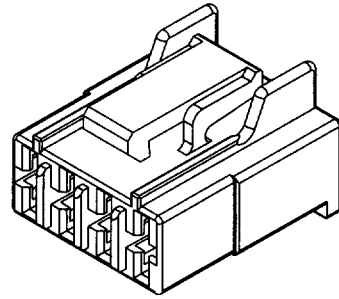
Packaging: Box
 Mates With: 94532
 Use With: HNF terminals
 Designed In: Millimeters

Physical

Housing: 6.6 nylon, UL 94V-2
 Temperature: -40 to +85°C

molex® 5.00mm (.197") Pitch Wire-to-Wire, Wire-to-Tab Housing

94213 Female with Latch



ORDERING INFORMATION AND DIMENSIONS

Circuits	Order No.	Color	Dimension A
4	94213-9004	White	19.80 (.779)
4	94213-9014	Black	19.80 (.779)
5	94213-9015	Black	24.80 (.976)
8	94213-9008	White	40.00 (1.575)

