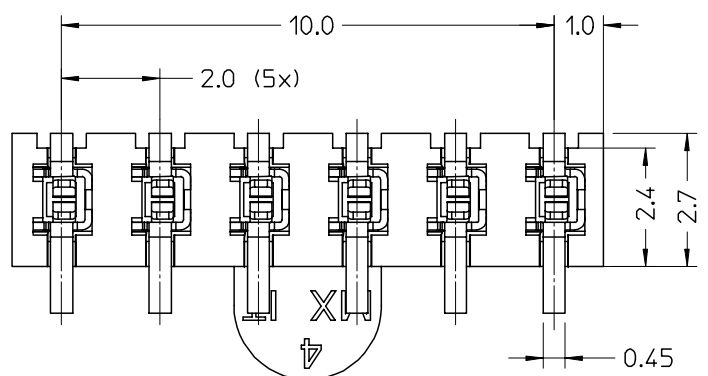
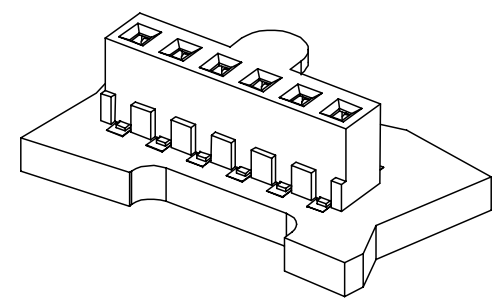
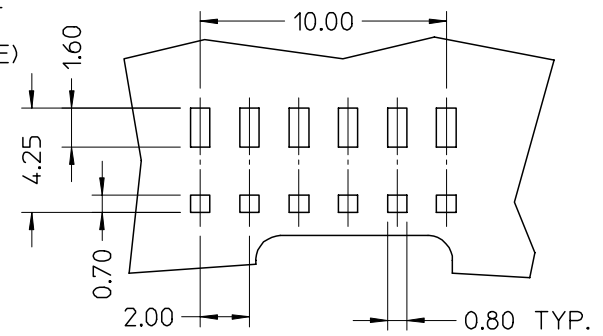
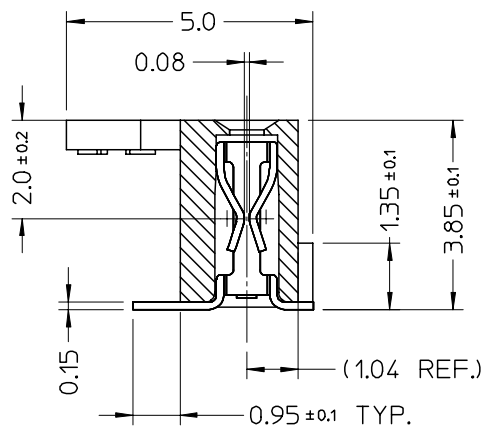


10 9 8 7 6 5 4 3 2 1

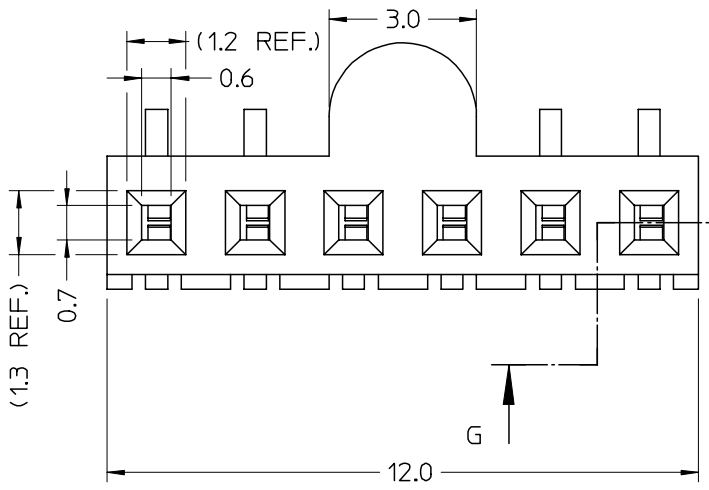
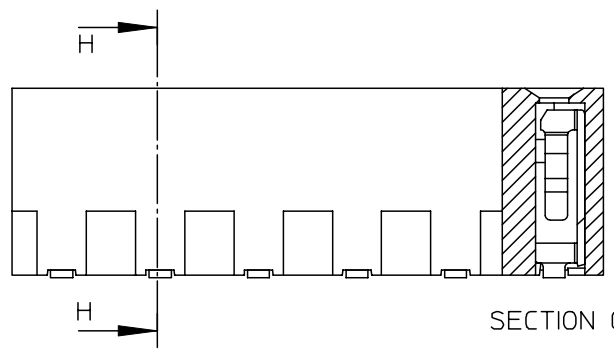
RECOMMENDED PCB LAYOUT
(VIEW FROM COMPONENT SIDE)
SCALE 5:1



SECTION H-H



SECTION G-G



- NOTES
- MATERIALS:
 - HOUSING: BLACK PA 46, 30 % GF, UL 94 V0
 - TERMINALS: 4 um PRETINNED PhBz
 - SMT LEADS COPLANARITY: 0.15 mm MAX
 - PACKAGING: IN TAPE & REEL
 - SPQ: 16800 pcs/BOX (2400 pcs/REEL - 7 REELS/BOX)
 - PRODUCT CHARACTERISTICS: ACCORDING TO PS 94103-005

Std. Descr.: SIP SOCKET SMT 6 CKT

EC NO: Z2006-0182 DRWN: SBARBIER 2006/05/16 CHKD: RSANDANO 2006/05/16 APPR: FBI SELLO 2006/05/16	QUALITY SYMBOLS ▽=0 ▽=0	GENERAL TOLERANCES (UNLESS SPECIFIED)		DIMENSION STYLE	SCALE	DESIGN UNITS	FIRST ANGLE PROJECTION	
				MM ONLY	10:1	METRIC		
		mm	INCH	DRAWN BY DATE				
		4 PLACES ± ---	± ---	SBARBIER 1999/04/20				
3 PLACES ± ---	± ---	CHECKED BY DATE						
2 PLACES ± 0.05	± ---	SSORATO 1999/04/20						
1 PLACE ± 0.10	± ---	APPROVED BY DATE						
ANGULAR ± 2 °		RMARTUCC 1999/04/20						
DRAFT WHERE APPLICABLE MUST REMAIN WITHIN DIMENSIONS		MATERIAL NO.		DOCUMENT NO.		SHEET NO.		
		94103-5006		SD-94103-004		1 OF 1		
THIS DRAWING CONTAINS INFORMATION THAT IS PROPRIETARY TO MOLEX INCORPORATED AND SHOULD NOT BE USED WITHOUT WRITTEN PERMISSION								

6 CKT SIP SOCKET
SMT VERSION

MOLEX INCORPORATED

9 8 7 6 5 4 3 2 1