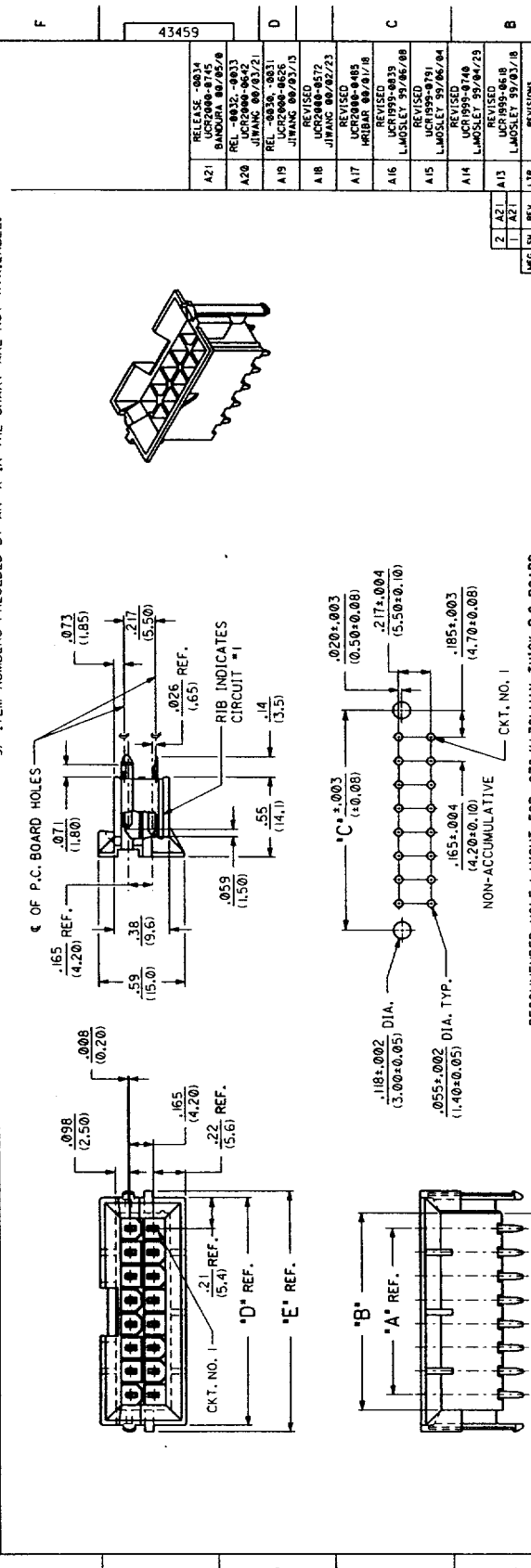


CIRCUIT SIZE	DIM. 'A'	DIM. 'B'	DIM. 'C'	DIM. 'D'	DIM. 'E'
2	—	.21 (5.4)	.370 (9.40)	.425 (10.80)	.520 (13.20)
4	.17 (4.2)	.38 (9.6)	.535 (13.60)	.590 (15.00)	.685 (17.40)
6	.33 (8.4)	.54 (13.8)	.701 (17.80)	.756 (19.20)	.850 (21.60)
8	.50 (12.6)	.71 (18.0)	.866 (22.00)	.921 (23.40)	1.016 (25.80)
10	.66 (16.6)	.87 (22.2)	1.031 (26.20)	1.087 (27.60)	1.181 (30.00)
12	.83 (21.0)	1.04 (26.4)	1.197 (30.40)	1.252 (31.80)	1.346 (34.20)
14	.99 (25.2)	1.20 (30.6)	1.362 (34.60)	1.417 (36.00)	1.512 (38.40)
16	1.16 (29.4)	1.37 (34.8)	1.528 (39.00)	1.583 (40.20)	1.677 (42.60)
18	1.32 (33.6)	1.54 (39.0)	1.693 (43.00)	1.748 (44.40)	1.843 (46.80)
20	1.49 (37.8)	1.70 (43.2)	1.858 (47.20)	1.913 (48.60)	2.008 (51.00)
22	1.65 (42.0)	1.87 (47.4)	2.024 (51.40)	2.079 (52.80)	2.173 (55.20)
24	1.82 (46.2)	2.03 (51.6)	2.189 (55.60)	2.244 (57.00)	2.339 (59.40)



REV.	DATE	BY	CHKD.	DESCRIPTION
2	08/18/07	AM	AM	REVISED
1	08/18/07	AM	AM	REVISED
0	08/18/07	AM	AM	REVISED

REV.	DATE	BY	CHKD.	DESCRIPTION
2	08/18/07	AM	AM	REVISED
1	08/18/07	AM	AM	REVISED
0	08/18/07	AM	AM	REVISED

REV.	DATE	BY	CHKD.	DESCRIPTION
2	08/18/07	AM	AM	REVISED
1	08/18/07	AM	AM	REVISED
0	08/18/07	AM	AM	REVISED

REV.	DATE	BY	CHKD.	DESCRIPTION
2	08/18/07	AM	AM	REVISED
1	08/18/07	AM	AM	REVISED
0	08/18/07	AM	AM	REVISED

REV.	DATE	BY	CHKD.	DESCRIPTION
2	08/18/07	AM	AM	REVISED
1	08/18/07	AM	AM	REVISED
0	08/18/07	AM	AM	REVISED

REV.	DATE	BY	CHKD.	DESCRIPTION
2	08/18/07	AM	AM	REVISED
1	08/18/07	AM	AM	REVISED
0	08/18/07	AM	AM	REVISED

REV.	DATE	BY	CHKD.	DESCRIPTION
2	08/18/07	AM	AM	REVISED
1	08/18/07	AM	AM	REVISED
0	08/18/07	AM	AM	REVISED

REV.	DATE	BY	CHKD.	DESCRIPTION
2	08/18/07	AM	AM	REVISED
1	08/18/07	AM	AM	REVISED
0	08/18/07	AM	AM	REVISED

NOTES:

- HOUSING MATERIAL AND OPTIONS:
 A - NYLON 6/6, U.L. 94V-2, WITHOUT DRAIN HOLES, COLOR: NATURAL.
 B - NYLON 6/6, U.L. 94V-0, WITHOUT DRAIN HOLES, COLOR: NATURAL.
 C - NYLON 6/6, U.L. 94V-2, WITH DRAIN HOLES, COLOR: NATURAL.
 D - NYLON 6/6, U.L. 94V-0, WITH DRAIN HOLES, COLOR: NATURAL.
- TERMINAL MATERIAL: BRASS ALLOY 260.
- PART MATES WITH MINI-FIT RECEPTACLES * 5557 & * 42474.
- PART IS DESIGNED IN METRIC.
- PART ALLOWS FOR UP TO .100/(12.54) MISALIGNMENT WITH MATING RECEPTACLE IN ANY DIRECTION. SEE MATING CONNECTOR DRAWINGS FOR SPECIFIC ALLOWANCES.
- TERMINAL PLATING:
 A - .000100/(.00254) MIN. TIN-LEAD OVER .000050/(.00127) MIN. NICKEL.
 B - .000050/(.00127) MIN. SELECT GOLD AND .000100/(.00254) MIN. SELECT TIN-LEAD OVER .000050/(.00127) MIN. NICKEL.
 D - .000100/(.00254) MIN. TIN OVER .000050/(.00127) MIN. NICKEL.
 E - .000030/(.00076) MIN. SELECT GOLD AND .000100/(.00254) MIN. SELECT TIN-LEAD OVER .000050/(.00127) MIN. NICKEL.
- THIS PART CONFORMS TO MOLEX PRODUCT SPEC. NO. PS-5556-0002.
- CONNECTOR ASSEMBLIES ARE NOT TO BE MATED OR UNMATED WHILE CIRCUITS ARE LIVE.
- ITEM NUMBERS PRECEDED BY AN 'X' IN THE CHART ARE NOT AVAILABLE.

2-24 CKT. VERT. HEADER ASSY
 MINI-FIT B.M.I., MAKE FIRST
 BREAK LAST W/NO DRAIN HOLE OPT.

MOLEX INCORPORATED
 1350 S. STATE ST. DEPT. 2
 MOLEX, ILL. 60131

SEE SHT. 2
 SDA-43459-0000

DATE: 08/18/07
 BY: AM
 CHKD: AM

RECOMMENDED HOLE LAYOUT FOR .070/(1.78) MAX. THICK P.C. BOARD

