

FEATURES AND SPECIFICATIONS

Features and Benefits

- Secure retention system resists vibration and wire loads
- Polarization feature eliminates mis-mating
- Convection or vapor phase soldering

Reference Information

UL : File No. E48521
Guide No. XCFR2
CSA: File No. 025562

Electrical

Voltage: 300V
Maximum Current: 10 Amp
Insulation Resistance: >5,000 Megaohms

Mechanical

Operating Temperature: 140°C

Physical

Housing: Nylon 4/6, UL94 V-0, black
Header Pin: Brass
Header Pin Plating: Tin



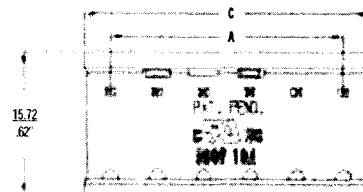
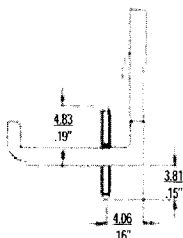
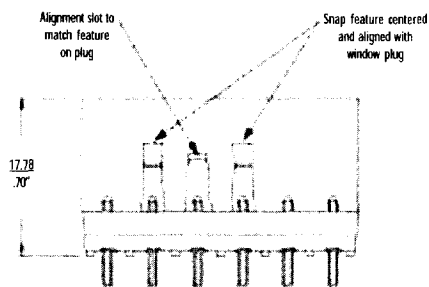
**5.08mm (.200") Pitch
Beau Eurostyle®
Locking Header**

**39980, 39981
Surface Mount Compatible**



98 Series

CATALOG DRAWING (FOR REFERENCE ONLY)



ORDERING INFORMATION AND DIMENSIONS

Part Numbers *				# of Circuits	Dimensions			
Tin Plated		Gold Plated			A		B	
Order #	Engineering #	Order #	Engineering #	in	mm	in	mm	
39980-0402	981502	39981-0402	981502-G30	2	.20	5.08	.43	10.92
39980-0403	981503	39981-0403	981503-G30	3	.40	10.16	.63	16.00
39980-0404	981504	39981-0404	981504-G30	4	.60	15.24	.83	21.08
39980-0405	981505	39981-0405	981505-G30	5	.80	20.32	1.03	26.16
39980-0406	981506	39981-0406	981506-G30	6	1.00	25.40	1.23	31.24
39980-0407	981507	39981-0407	981507-G30	7	1.20	30.48	1.43	36.32
39980-0408	981508	39981-0408	981508-G30	8	1.40	35.56	1.63	41.40
39980-0409	981509	39981-0409	981509-G30	9	1.60	40.64	1.83	46.48
39980-0410	981510	39981-0410	981510-G30	10	1.80	46.18	2.03	51.56
39980-0411	981511	39981-0411	981511-G30	11	2.00	50.20	2.23	56.64
39980-0412	981512	39981-0412	981512-G30	12	2.20	55.88	2.43	61.72
39980-0413	981513	39981-0413	981513-G30	13	2.40	60.96	2.63	66.50
39980-0414	981514	39981-0414	981514-G30	14	2.60	66.04	2.83	71.88
39980-0415	981515	39981-0415	981515-G30	15	2.80	71.12	3.03	76.96
39980-0416	981516	39981-0416	981516-G30	16	3.00	76.20	3.23	82.04
39980-0417	981517	39981-0417	981517-G30	17	3.20	81.28	3.43	87.12
39980-0418	981518	39981-0418	981518-G30	18	3.40	86.36	3.63	92.20
39980-0419	981519	39981-0419	981519-G30	19	3.60	91.44	3.83	97.28
39980-0420	981520	39981-0420	981520-G30	20	3.80	96.52	4.03	102.36
39980-0421	981521	39981-0421	981521-G30	21	4.00	101.60	4.23	107.44
39980-0422	981522	39981-0422	981522-G30	22	4.20	106.68	4.43	112.52
39980-0423	981523	39981-0423	981523-G30	23	4.40	111.76	4.63	117.60
39980-0424	981524	39981-0424	981524-G30	24	4.60	116.84	4.83	122.68

* Consult factory for imprinting and other options