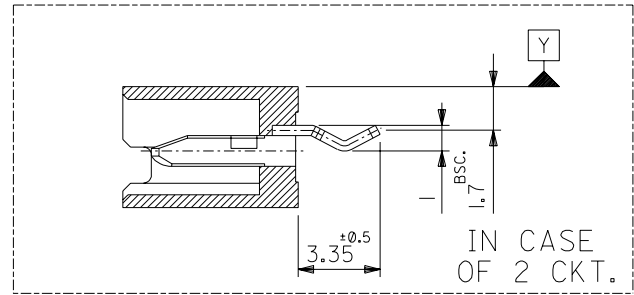


RECOMMENDED P.C.B. HOLE DIMENSIONS
(t=1.6)

(NON-ACCUM.)	2.5 ± 0.1	Ø0.85 ± 0.05
(PITCH)		



WAFER
(G.F.15% PBTP,UL94V-0)

CIRCUIT NO.

PIN
(PHOSPHOR BRONZE,TIN PLATED)

Ø 0.8 Y Z

35	39.9	38.3	35	39-27-6153	5483-15AX	15
32.5	37.4	35.8	32.5	▲ -6143	▲ -14AX	14
30	34.9	33.3	30	▲ -6133	▲ -13AX	13
27.5	32.4	30.8	27.5	▲ -6123	▲ -12AX	12
25	29.9	28.3	25	▲ -6113	▲ -11AX	11
22.5	27.4	25.8	22.5	▲ -6103	▲ -10AX	10
20	24.9	23.3	20	▲ -6093	▲ -09AX	9
17.5	22.4	20.8	17.5	▲ -6083	▲ -08AX	8
15	19.9	18.3	15	▲ -6073	▲ -07AX	7
12.5	17.4	15.8	12.5	▲ -6063	▲ -06AX	6
10	14.9	13.3	10	▲ -6053	▲ -05AX	5
7.5	12.4	10.8	7.5	▲ -6043	▲ -04AX	4
5	9.9	8.3	5	▲ -6033	▲ -03AX	3
2.5	7.4	5.8	2.5	▼ 39-27-6023	▼ 5483-02AX	2
D	C	B	A	EDP NO.	ENG. NO.	NO. OF CKTS.

NOTES
 1. MATES WITH : 5480-N
 △ KINK,TO BE APPLIED FOR THE BOTH END OF TERMINAL.

材料 MATERIAL	SEE DRAWING	MOLEX-JAPAN CO.,LTD. 日本モレックス株式会社	
仕上げ FINISH	— / —	EDP. NO. 39-27-6**3	
適用電線範囲 WIRE RANGE	— / —	ENG. NO. SD-5483-NAX	
被覆外径 INS. RANGE	— / —	REV F	
DRAWN BY 88/8/5 H.HIRAMOTO	CHK'D BY 91/08/30 M.FUKUSHIMA	TITLE 名称 2.5 LOW PROFILE WAFER ASS'Y WITH KINK	
APP'D BY 91/08/30 M.ENOMOTO	尺 度 SCALE 5 - 1		
角度 ANGLE	±3°		
30 以上 OVER	+0.3	F REVISED (J91070)	
10 以上 OVER 30 UNDER	+0.25	E REDRAWN (J80651)	
10 未満 UNDER	+0.2	記号 変更内容 REVISION RECORD	
一般公差 GENERAL TOLERANCES	REVISE ONLY ON CAD SYSTEM	DR. 日付 CHK. DATE	