

FEATURES AND SPECIFICATIONS

Features and Benefits

- Sizes 4 to 50 circuits
- End-to-end stackable
- Optional voided pin version, kinked PC tail and other PC tail lengths
- Surface Mount Compatible

Reference Information

Product Specification: PS-87049
 Packaging: Bag
 UL File No.: E29179
 CSA File No.: LR19980-182
 Mates With: Milli-Grid 2.00mm Receptacles
 Designed In: Millimeters

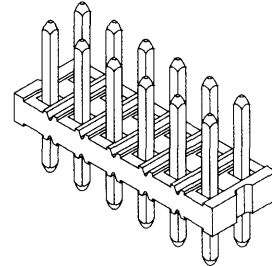
Electrical

Current: 2.0A
 Dielectric Withstanding Voltage: 500V
 Insulation Resistance: 1000 MΩ min.

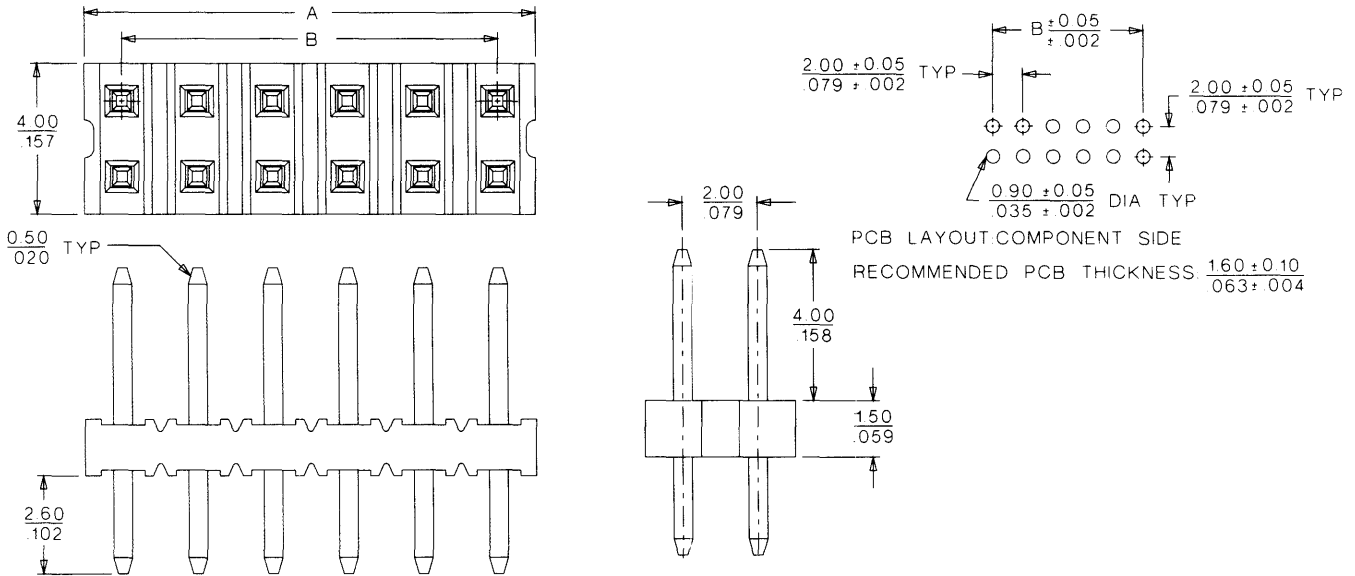
Physical

Housing: High-temperature 4/6 nylon, UL 94V-0
 Contact: Phosphor Bronze, 0.50mm square
 Plating: See Table
 Operating Temperature: -55 to +105°C
 PCB Thickness: 1.60 ± 0.10mm

molex® 2.00mm (.079") Pitch Milli-Grid™ Header 87089 Vertical



CATALOG DRAWING (FOR REFERENCE ONLY)



ORDERING INFORMATION AND DIMENSIONS

Circuits	Order No.		Dimension	
	15μ" Select Gold	30μ" Select Gold	A	B
4	87089-0416	87089-0417	3.90 (.154)	2.00 (.079)
6	87089-0616	87089-0617	5.90 (.232)	4.00 (.157)
8	87089-0816	87089-0817	7.90 (.311)	6.00 (.236)
10	87089-1016	87089-1017	9.90 (.390)	8.00 (.315)
12	87089-1216	87089-1217	11.90 (.469)	10.00 (.394)
14	87089-1416	87089-1417	13.90 (.547)	12.00 (.472)
16	87089-1616	87089-1617	15.90 (.626)	14.00 (.551)
18	87089-1816	87089-1817	17.90 (.705)	16.00 (.630)
20	87089-2016	87089-2017	19.90 (.783)	18.00 (.709)
22	87089-2216	87089-2217	21.90 (.862)	20.00 (.787)
24	87089-2416	87089-2417	23.90 (.941)	22.00 (.866)
26	87089-2616	87089-2617	25.90 (1.020)	24.00 (.945)

Circuits	Order No.		Dimension	
	15μ" Select Gold	30μ" Select Gold	A	B
28	87089-2816	87089-2817	27.90 (1.098)	26.00 (1.024)
30	87089-3016	87089-3017	29.90 (1.177)	28.00 (1.102)
32	87089-3216	87089-3217	31.90 (1.256)	30.00 (1.181)
34	87089-3416	87089-3417	33.90 (1.335)	32.00 (1.260)
36	87089-3616	87089-3617	35.90 (1.413)	34.00 (1.339)
38	87089-3816	87089-3817	37.90 (1.492)	36.00 (1.417)
40	87089-4016	87089-4017	39.90 (1.571)	38.00 (1.496)
42	87089-4216	87089-4217	41.90 (1.650)	40.00 (1.575)
44	87089-4416	87089-4417	43.90 (1.728)	42.00 (1.654)
46	87089-4616	87089-4617	45.90 (1.807)	44.00 (1.732)
48	87089-4816	87089-4817	47.90 (1.886)	46.00 (1.811)
50	87089-5016	87089-5017	49.90 (1.965)	48.00 (1.890)

B
 2.00 to 2.50mm (.079 to .098") Pitch