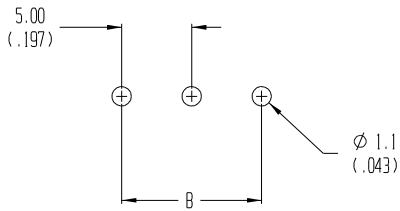


MATERIAL NO.	NO. OF CIRCUITS	ENG. NO. (BEAU. NO.)	DIM. "B"	
	"XX"		IN.	MM
39890-0302	02	890102	.20	5.0
39890-0303	03	890103	.39	10.0
39890-0304	04	890104	.59	15.0
39890-0305	05	890105	.79	20.0
39890-0306	06	890106	.98	25.0
39890-0307	07	890107	1.18	30.0
39890-0308	08	890108	1.38	35.0
39890-0309	09	890109	1.58	40.0
39890-0310	10	890110	1.77	45.0
39890-0311	11	890111	1.97	50.0
39890-0312	12	890112	2.17	55.0
39890-0313	13	890113	2.36	60.0
39890-0314	14	890114	2.56	65.0
39890-0315	15	890115	2.76	70.0
39890-0316	16	890116	2.95	75.0
39890-0317	17	890117	3.15	80.0
39890-0318	18	890118	3.35	85.0
39890-0319	19	890119	3.54	90.0
39890-0320	20	890120	3.74	95.0
39890-0321	21	890121	3.94	100.0
39890-0322	22	890122	4.13	105.0
39890-0323	23	890123	4.33	110.0
39890-0324	24	890124	4.53	115.0
39890-0325	25	890125	4.72	120.0



ITEM	QTY.	DESCRIPTION	MATERIAL	FINISH
4	XX	SCREW, M3	COPPER	NICKEL
3	XX	CAGE CLAMP	COPPER	NICKEL
2	XX	TERMINAL, PC	COPPER	HOT TIN DIP
1	1	INSULATOR	POLYAMIDE	BLACK

EC NO. 3846  
 ECNR# 3846  
 DRWN: CY 09-02-04  
 CHK: K:  
 APPR:

DESCRIPTION  
 MAJOR  
 CRITICAL  
 SPC  
 S

QUALITY SYMBOLS  
 GENERAL TOLERANCES: (UNLESS SPECIFIED)  
 4 PLACES ±.0015  
 3 PLACES ±.038 ±.005  
 2 PLACES ±.13 ±.01  
 1 PLACE ±.3  
 ANGULAR: ±2°  
 DRAFT WHERE APPLICABLE MUST REMAIN WITHIN DIMENSIONS

SCALE 3:1  
 DESIGN UNITS  
 mm  INCH  
 DRAWN BY & DATE  
 R. KEMP 5-14-02  
 CHECKED BY & DATE  
 R. STONE 5-14-02  
 APPROVED BY & DATE  
 P. WALTZ 5-14-02  
 CAD FILENAME  
 8901XX.PRT

PROJECT NO. 04-124  
 DIMENSIONS:  
 mm  INCH  
 mm ONLY  
 SHT REV  
 REVISE ON CAD ONLY  
 TITLE: 5.00mm EUROSTYLE LOW, SINGLE ROW FIXED BLOCK  
 MOLEX INCORPORATED  
 MATERIAL NO. SEE CHART  
 DRAWING NO. SD-39890-003  
 SHEET NO. 1 OF 1  
 SIZE B

THIS DRAWING CONTAINS INFORMATION THAT IS PROPRIETARY TO MOLEX INCORPORATED AND SHOULD NOT BE USED WITHOUT WRITTEN PERMISSION.