

FEATURES AND SPECIFICATIONS

Features and Benefits

- 4 to 48 circuits
- Holds wires for secure, reliable contact
- Modular construction reduces inventory
- High flammability rating

Reference Information

UL : File No. E48521
 Guide No. XCFR2
 CSA: File No. 025562



5.08mm (.200") Pitch
Beau Eurostyle®
Medium Profile, Two Level
Terminal Block

Electrical

Voltage: 300 V
 Maximum Current: 13.5 Amp
 Insulation Resistance: >5,000 Megaohms

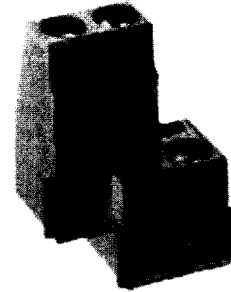
Mechanical

Rec. Tightening Torque: 5 in. lbs., .56 Nm
 Operating Temperature: 110°C
 Wire Strip Length: 1/4" or 6mm

Physical

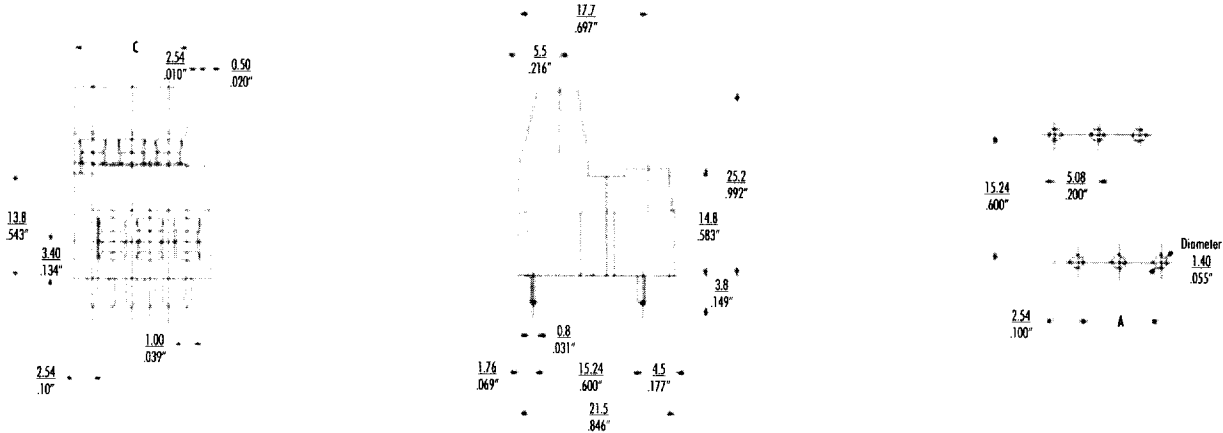
Housing: Polyamide, UL94 V-0, black
 Screws: Bronze
 Screw Plating: Nickel
 Contacts: Copper Alloy
 Contact Plating: Tin
 Pressure Clamp: Brass
 Pressure Clamp Plating: Nickel
 Wire Range: 14 to 26 AWG, 1.5 to 0.2mm²

39880
Modular



88 Series

CATALOG DRAWING (FOR REFERENCE ONLY)



ORDERING INFORMATION AND DIMENSIONS

Order # (Engineering #) Replace XX with # of circuits, 04-48

Tin Plated

39880-06XX (8822XX)

# of Circuits	A		C		# of Circuits	A		C	
	in	mm	in	mm		in	mm	in	mm
4	.20	5.1	.42	10.2	28	2.60	66.0	2.82	71.1
6	.40	10.2	.62	15.2	30	2.80	71.1	3.02	76.2
8	.60	15.2	.82	20.3	32	3.00	76.2	3.22	81.3
10	.80	20.3	1.02	25.4	34	3.20	81.3	3.42	86.4
12	1.00	25.4	1.22	30.5	36	3.40	86.4	3.62	91.4
14	1.20	30.5	1.42	35.6	38	3.60	91.4	3.82	96.5
16	1.40	35.6	1.62	40.6	40	3.80	96.5	4.02	101.6
18	1.60	40.6	1.82	45.7	42	4.00	101.6	4.22	106.7
20	1.80	45.7	2.02	50.8	44	4.20	106.7	4.42	111.8
22	2.00	50.8	2.22	55.9	46	4.40	111.8	4.62	116.8
24	2.20	55.9	2.42	61.0	48	4.60	116.8	4.82	121.9
26	2.40	61.0	2.62	66.0					

*Consult factory for imprinting and other options