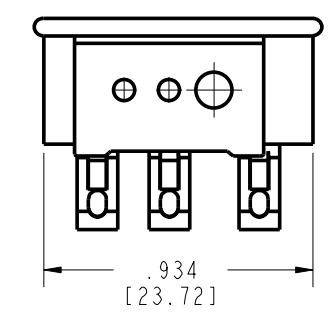
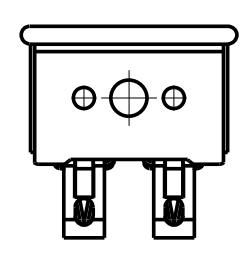
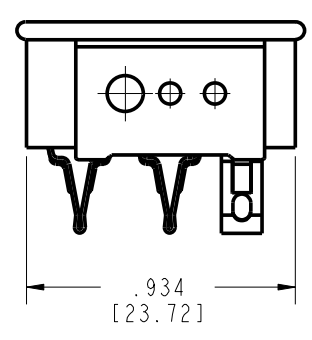
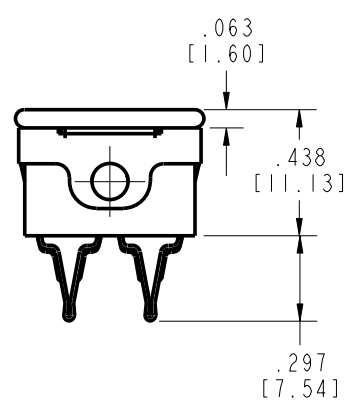
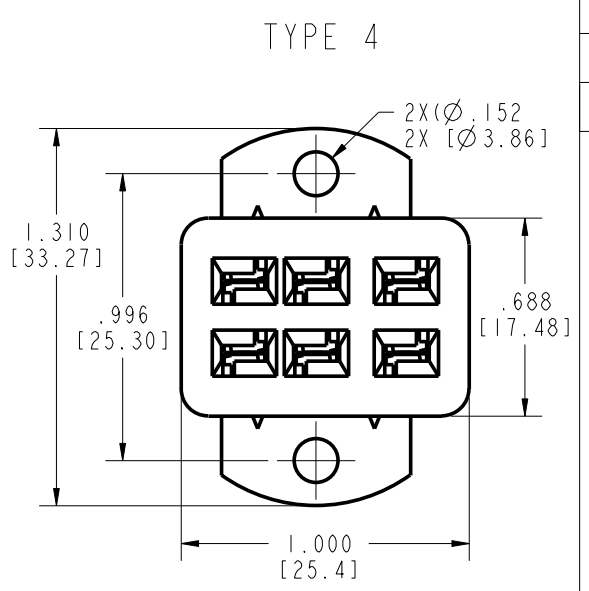
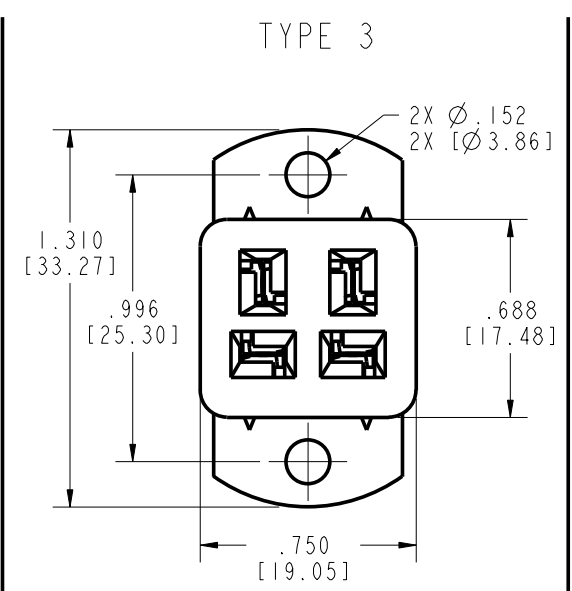
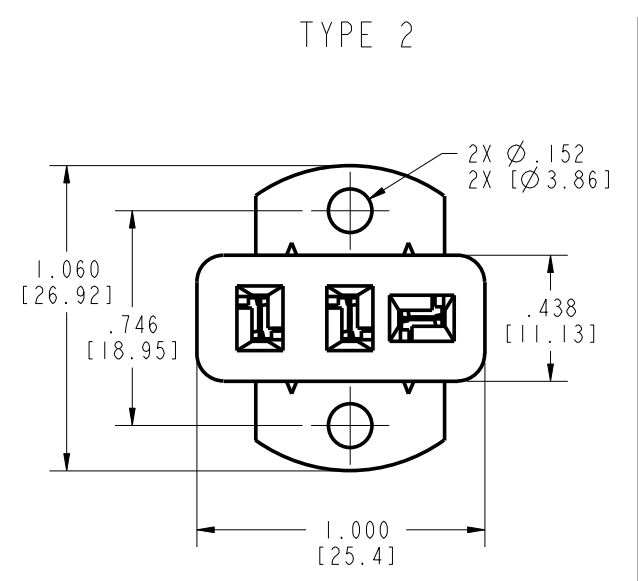
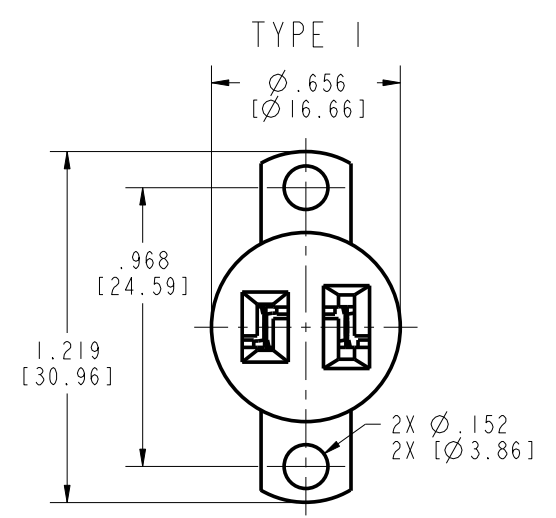


**DRAWING REVISIONS**

REV	DOCUMENT	APP	DATE
1	DO 06-1067		



PART NUMBER	TYPE	FACTORY NUMBER
S-302H-AB	1	703 02 02 001
S-303H-AB	2	703 02 03 001
S-304H-AB	3	703 02 04 001
S-306H-AB	4	703 02 06 001

**NOTES:**

**1. SPECIFICATIONS:**

**ELECTRICAL:**  
 OPERATING VOLTAGE: 250 VAC RMS  
 CURRENT RATING: 10 AMPS  
 CONTACT RESISTANCE: 16 MILLIOHMS MAX

**INSULATOR:** GENERAL PURPOSE PHENOLIC, BLACK

**CONTACT:** BRASS, MATTE TIN

**BRACKET, DRIVE PIN:** STEEL, ZINC WITH CLEAR TRIVALENT CHROMATE

**ENVIRONMENTAL:**  
 OPERATING TEMPERATURE: UP TO +105°C

**TERMINATION:** SOLDER

**2. DIMENSIONS IN [ ] ARE IN MILLIMETERS**

**3. ALL DIMENSIONS ARE REFERENCE**

**RoHS COMPLIANT**

UNITS <b>ENGLISH INCHES</b>		PRO/E		Cinch		MODELED BY: JIMENEZ	
DO NOT SCALE DRAWING		DRAWN BY JIMENEZ	DATE 6/20/06	TITLE SOCKET ASSEMBLY, ANGLE BRACKET			
UNLESS OTHERWISE SPECIFIED: ALL DIMENSIONS ARE IN INCHES		DESIGN ENGINEER A. BALI	6/20/06	MATERIAL		CONTROL SPEC NUMBER 06-1067	
FILLET/RADII .02 MAX		DESIGN ENGINEERING MGR.		MATERIAL SPEC NUMBER		PROJECT NUMBER C14789-1	
TOLERANCES ± .01 .XXX ± .005 ANGULAR ± .5°		MFG. ENGINEERING		CAD FILE NUMBER S302HAB		DRAWING NUMBER <b>S-302H-AB</b>	
THIS DOCUMENT IS THE PROPERTY OF CINCH. NEITHER THIS DOCUMENT NOR ANY OF THE INFORMATION CONTAINED IN IT MAY BE DUPLICATED OR DISCLOSED WITHOUT PRIOR WRITTEN CONSENT OF CINCH.		QUALITY ASSURANCE		CAGE IDENT NO. <b>71785</b>	SCALE 1.000	SHEET 1 OF 1	