

# High Precision Power Splitter

## PS Series



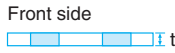
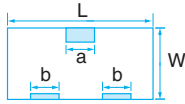
Power splitter with excellent high frequency characteristics for applications from DC~20GHz Bit error is restrained by keeping high frequency digital signal stable Offer standard type with ground and custom type designed to customer' specification.

RoHS compliant Completely lead free



### SPECIFICATIONS

#### Mechanical



Back side  
No ground for custom type

Dimension (mm)	PS1608(G)	PS2012(G)	PS3216(G)	PS5025(G)
L	1.6±0.2	2.0±0.2	3.2±0.2	5.0±0.2
W	0.8±0.2	1.25±0.2	1.6±0.2	2.5±0.2
a	0.4±0.1	0.4±0.1	0.3±0.1	0.35±0.1
b	0.3±0.1	0.3±0.1	0.35±0.1	0.65±0.1
t	0.4±0.1	0.4±0.1	0.4±0.1	0.8±0.15

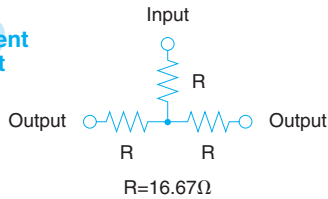
#### Electrical

Standard type

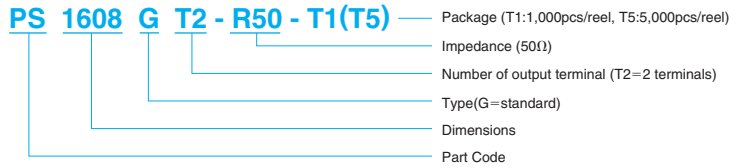
Type	PS1608G	PS2012G	PS3216G	PS5025G
Operating frequency	DC~20GHz	DC~17.5GHz	DC~15GHz	DC~10GHz
Insertion loss	6±0.5dB(DC~10GHz)	6±0.5dB(DC~10GHz)	6±0.5dB(DC~10GHz)	6±0.5dB(DC~7.5GHz)
	6±1.0dB(10GHz~20GHz)	6±1.0dB(10GHz~17.5GHz)	6±1.0dB(10GHz~15GHz)	6±1.0dB(7.5GHz~10GHz)
Insertion loss	max.0.3dB			
Insertion loss	1.3(DC~10GHz)	1.3(DC~10GHz)	1.3(DC~10GHz)	1.3(DC~7.5GHz)
	1.5(10GHz~20GHz)	1.5(10GHz~17.5GHz)	1.5(10GHz~15GHz)	1.5(7.5GHz~10GHz)
Input power	100mW	125mW	250mW	500mW
Max overload power	200mW	250mW	500mW	1000mW
Operating temperature	-40~125°C			
Package	1,000 · 5,000pcs/reel			

\*Standard type with ground on back side can gain stable performance regardless of circuit characteristics  
\*Custom type without ground on back side can be designed according to specific circuit  
· Please ask as for chip custom type with dimension of 1.0\*0.5mm  
· Simplified pattern can be realized as ground is not required on the surface of circuit

#### Equivalent circuit



### PART NUMBER



# Positive Emitter Coupled Logic(PECL) Chip Terminators



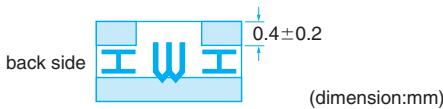
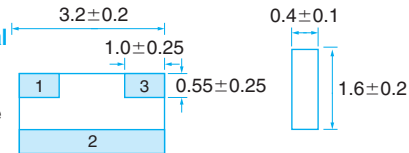
Suitable for output applications in emitter coupled logic for high-speed signal transmission. Minimized reflection permits high-speed data processing.

RoHS compliant Completely lead free



### SPECIFICATIONS

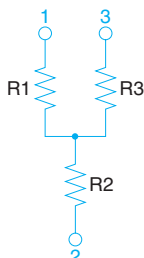
#### Mechanical



#### Electrical

Type	RN1632F
Resistance (Ω)	R1=50, R2=46.4, R3=50 ; typical
Tolerance %(code)	±1.0%(F)
TCR ppm /°C(code)	±50ppm/°C
Power Rating	42mW/element ; 125mW/package
Rated Operating Temperature	-55°C~+125°C
Package	5,000pcs/reel

#### Equivalent circuit



### PART NUMBER

