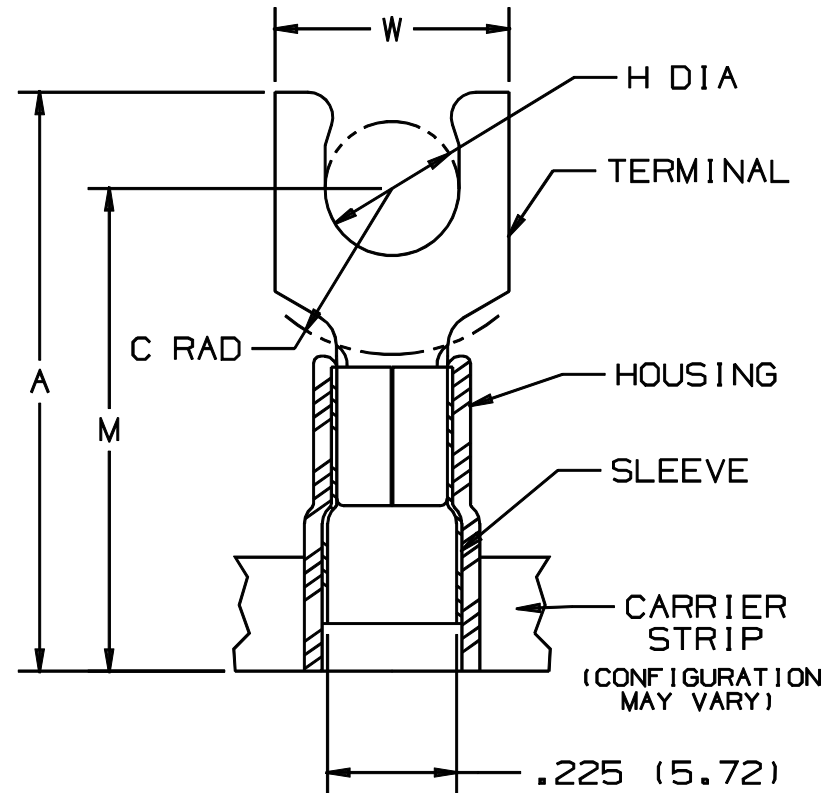


THIS COPY IS PROVIDED ON A RESTRICTED BASIS AND IS NOT TO BE USED IN ANY WAY DETRIMENTAL TO THE INTERESTS OF PANDUIT CORP.

PANDUIT PART NUMBER	STUD SIZE	DIMENSIONS in.				
		A ±.040	W ±.010	C ±.020	M ±.040	H ±.010
PN10-5SLF-2K	#5	.86 (21.84)	.25 (6.35)	.17 (4.32)	.75 (19.05)	.12 (3.05)
PN10-6SLF-2K	#6	.86 (21.84)	.25 (6.35)	.17 (4.32)	.75 (19.05)	.14 (3.56)
PN10-8SLF-2K	#8	.92 (23.37)	.29 (7.37)	.22 (5.59)	.79 (20.07)	.16 (4.06)
PN10-10SLF-2K	#10	.92 (23.37)	.33 (8.38)	.22 (5.59)	.79 (20.07)	.19 (4.83)
PN10-14SLF-2K	1/4"	1.01 (25.65)	.45 (11.43)	.28 (7.11)	.85 (21.59)	.25 (6.35)

NOTES :

- UL LISTED AND CSA CERTIFIED FOR :
 - 600 V MAX. VOLTAGE RATING
 - 221°F (105°C) MAX. TEMP. RATING
 - #12-10 AWG (2.5-6.0 mm²) SOLID OR STRANDED, COPPER WIRE
- PACKAGE QTY. : 2K = 2000 PCS.
CONTINUOUS MOLDED CARRIER STRIP
- MATERIAL :
 - STAMPING - .04" THK COPPER, TIN PLATED
 - HOUSING - YELLOW NYLON
 - SLEEVE - BRASS, TIN PLATED
- DIMENSIONS IN BRACKETS ARE IN MILLIMETERS
- INSTALLATION TOOLS :
 - PRESSES - CP-851, CP-860, CP-861
 - APPLICATOR - CA-800
 - DIE INSERTS - CD-800-3
- WIRE STRIP LENGTH: $9/32^{+1/32}_{-0}$ (7.1^{+0.8}₋₀)



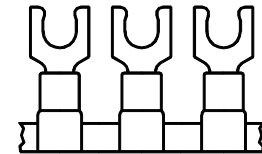
.225 (5.72)
MAX WIRE
INSUL DIA
.130 (3.30)
MIN. WIRE
INSUL. DIA.



LISTED
587H
E52164



CERTIFIED
LR31212



A41089_05

05	12/00	ED		FILESPEC WAS: N41089AA_PCD_04	08925				TINLEY PARK, ILLINOIS		
04	5/99	ED		UPDATED "A" & "M" DIM.S, AND MODIFIED DIMENSIONAL TOLERANCES	07659				TERMO 3PC CONTINUOUSLY MOLDED NYLON INSULATED, 12-10 BARREL, SHORT LOCKING FORKS		
03	12/96	JAMB	RLS	ADDED DIM., "MIN INSUL. DIA."	05387	LA	DRH				
REV	DATE	BY	CHK	DESCRIPTION	ECN	CUST	PM	DRAWN BY FES	Ck'D LA	SCALE NONE	DRAWING NO. A41089