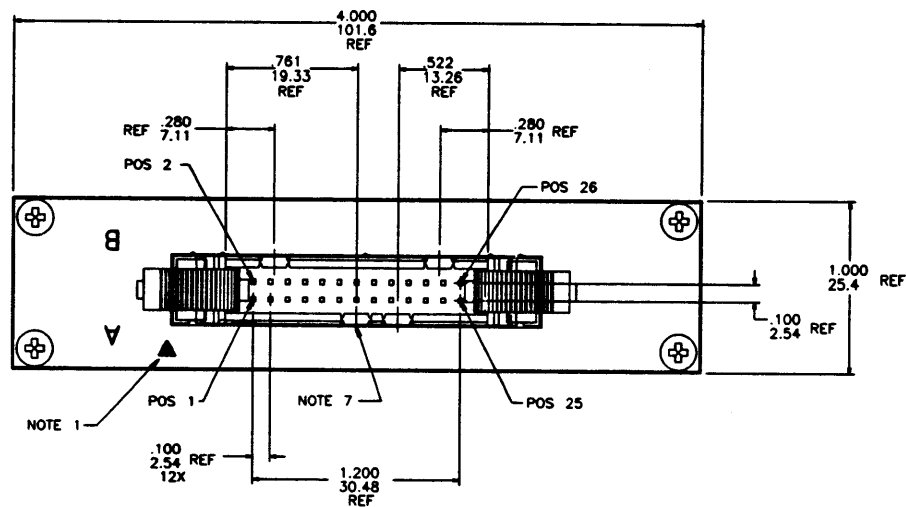
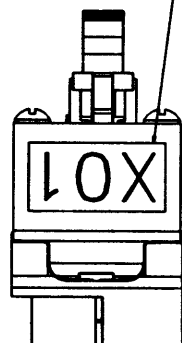


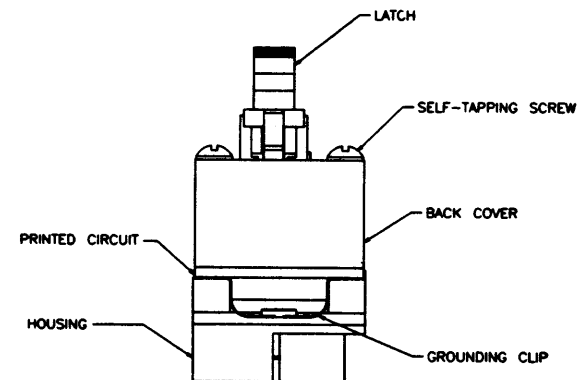
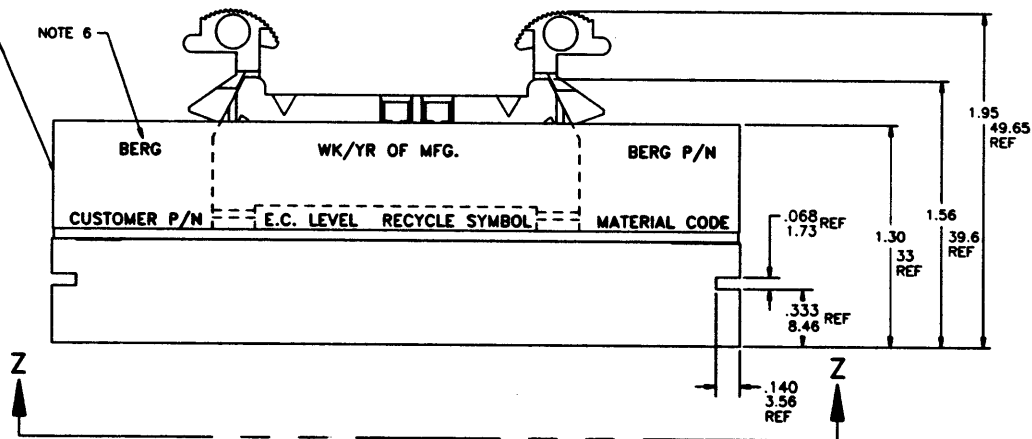
PRODUCT NUMBER
SEE TABLE



LABEL
P/N SEE TABLE
1 REQ'D



NOTE 6



REVISIONS				SHEET INDEX		ISSUE												
REV	ECN/DDR#	BY	DATE	SH NO.	1	2	3											
D	V23923	TWA	5/17/93															
E	V40432	BRW	8/23/99															
				TOLERANCES UNLESS OTHERWISE SPECIFIED		FINISH												
				.002 .01 / .02 .3														
				.0002 .005 / .002 .13		PRODUCT FAMILY												
				.00002 .0020 / .0002 .051		ADAPTORS												
				.03 .7		CAGE CODE												
						22526												
						J. WALDEN												
						5/13/91												

BERG
ELECTRONICS

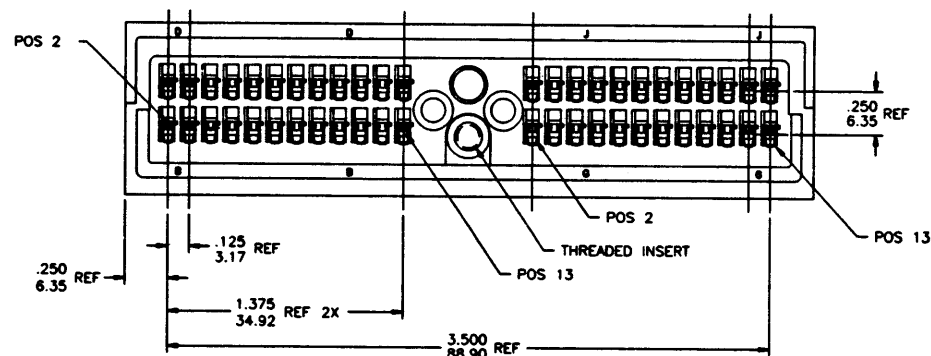
26 POSITION GROUND
CLIP ADAPTOR

SCALE: 3:1 D 90265 1 OF 3

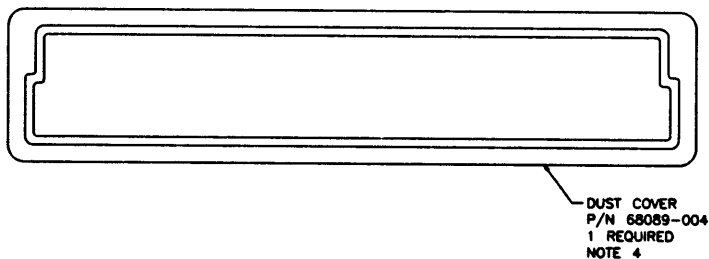
NOTE: THIS DOCUMENT IS THE PROPERTY OF AND CONTAINS PROPRIETARY INFORMATION OF BERG ELECTRONICS, INC. NO PART OF THE INFORMATION SHOWN ON THIS DOCUMENT MAY BE USED IN ANY WAY WITHOUT THE WRITTEN CONSENT OF BERG ELECTRONICS, INC.

FORM E-3047 REV 8/93

PRODUCT NUMBER	HOUSING TYPE AND COLOR	BACK COVER COLOR	CUSTOMER P/N - NOTE 6	LABEL TEXT	KEYS REMOVED	CUSTOMER EC LEVEL	RECYCLE SYMBOL	MATERIAL CODE
90265-001	DARK GRAY	DARK GRAY	69F4873	X01	A - B	EC-235857)PC(23-943H






VIEW Z-Z



- NOTES:**

- ① THE TRIANGLE ON THE HEADER INDICATES POSITION NO. 1 OF THE ASSEMBLY.
- ② THE ASSEMBLY IS HELD TOGETHER WITH 4 SELF TAPPING SCREWS. THE SCREWS ARE TO BE FLUSH AGAINST THE BACK COVER.
- ③ ALL PARTS ARE TO BE ELECTRICALLY TESTED FOR POTENTIAL SHORTS AND OPENS. ALL PARTS ARE TO BE PASSED THROUGH HI-POT TESTER. THEY MUST PASS AT 100 ± 10 VOLTS D.C. STEADY STATE FOR A MAXIMUM DURATION OF 5 SECONDS AT 500 ± 50 VOLTS D.C. IN ONE TENTH OF A SECOND PULSES. ELECTRICAL TESTER VERIFICATION MARK MUST BE LOCATED ON THIS SURFACE.
- ④ ALL PARTS ARE TO HAVE DUST COVER P/N 68089-004 INSTALLED AFTER ACCEPTANCE AT ELECTRICAL TESTING.
- ⑤ PARTS ARE TO BE PACKAGED PER GES-14-319.
- ⑥ BERG, WEEK/YEAR OF MFG., BERG P/N, CUSTOMER P/N, EC LEVEL, RECYCLE SYMBOL AND MATERIAL CODE TO BE CLEARLY PRINTED IN THE AREA INDICATED. SEE CHART FOR INFORMATION.
- ⑦ CENTER KEY TAB MUST BE REMOVED AT ALL TIMES.
- ⑧ THE CONNECTOR OF THE TERMINAL TO THE BOARD MUST BE ABLE TO WITHSTAND A PULL (PERPENDICULAR TO THE BOARD) OF NOT LESS THAN 44.5 N (10 LB).

REVISIONS				SHEET INDEX	ISSUE													
REV	ECN/DDR#	BY	DATE		SH	NO.												
F																		
				TOLERANCES UNLESS OTHERWISE SPECIFIED														
				002.01 / 02.3		FINISH	LW J. MUSTARD		5/13/91	CUSTOMER COPY								
				0002.005 / 002.13		LINEAR	ENGR H. WALDEN		5/13/91									
				00002.0020 / 0002.051		PRODUCT FAMILY ADAPTORS	CWR H. SUNDY		5/13/91	THIRD ANGLE PROJ								
				0002.0020 / 0002.051		ONE CDR	APPR H. WALDEN		5/13/91	UNIT INCH								
				ANGLES		Ø ± .2526												

NO PART OF THE INFORMATION SHOWN ON THIS DOCUMENT MAY BE USED IN ANY WAY WITHOUT THE WRITTEN CONSENT OF BERG ELECTRONICS, INC.

TITLE: 26 POSITION GROUND CLIP ADAPTOR				SHEET: 2 of 2	
SCALE: 3:1	SIZE: 3.1	DWG. NO.: 90265	BY: F. SUD W. RAY		

PRODUCT NUMBER

SEE TABLE

90265-001 DARK

FROM SERPENT PIN	TO HEADER PIN	FROM SERPENT PIN	TO HEADER PIN
B 02	GROUND	D 02	GROUND
03	26	03	GROUND
04	GROUND	04	13
05	25	05	GROUND
06	GROUND	06	9
07	GROUND	07	GROUND
08	21	08	GROUND
09	GROUND	09	7
10	19	10	GROUND
11	GROUND	11	3
12	15	12	GROUND
B 13	GROUND	D 13	2
G 02	GROUND	J 02	GROUND
03	GROUND	03	GROUND
04	GROUND	04	14
05	24	05	GROUND
06	GROUND	06	12
07	GROUND	07	GROUND
08	20	08	GROUND
09	GROUND	09	8
10	GROUND	10	GROUND
11	GROUND	11	6
12	18	12	GROUND
G 13	GROUND	J 13	1

* THE FOLLOWING ON THE HEADER MUST GO TO GROUND:
4, 5, 10, 11, 16, 17, 22, 23

REVISIONS				SHEET INDEX	ISSUE															
REV	ECN/DDR#	BY	DATE		SH NO.															
A																				
					TOLERANCES UNLESS OTHERWISE SPECIFIED		FINISH		DR		J. MUSTARD		5/13/91		CUSTOMER COPY					
					.002: .01 / .02: 3				DR		J. WALDEN		5/13/91							
					.0002: .005 / .002: 13		PRODUCT FAMILY		CHK		H. SUNDY		5/13/91							
					.00002: .0020 / .0002: .051		ADAPTORS		CHK		J. WALDEN		5/13/91							
					DIN 6091		22526		APPD		J. WALDEN		5/13/91							
					ANGLES		0.2													

BERG ELECTRONICS		TITLE		26 POSITION GROUND CLIP ADAPTOR		SCALE		SIZE		DWG. NO.		SHEET	
		3:1		D		90265		3 of					

NOTE: THIS DOCUMENT IS THE PROPERTY OF AND ENCLOSES PROPRIETARY INFORMATION OF BERG ELECTRONICS, INC. NO PART OF THE INFORMATION SHOWN ON THIS DOCUMENT MAY BE USED IN ANY WAY WITHOUT THE WRITTEN CONSENT OF BERG ELECTRONICS, INC. FORM E-3007 REV 8/93