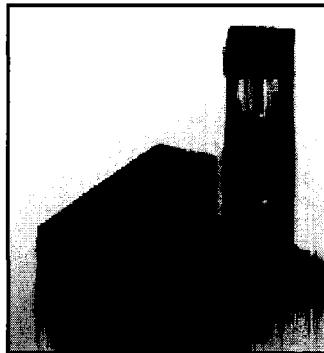
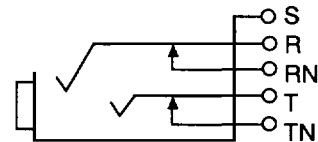


Components – Bantam Jacks

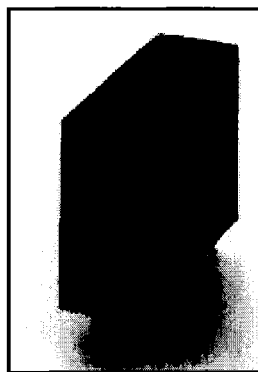
Bantam Printed Circuit Board Jacks Single Jack PC834



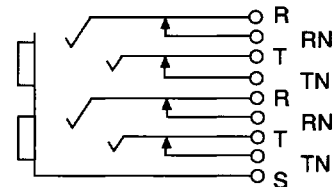
Printed Circuit Board (PCB) jacks are designed to mount on printed circuit boards wherever access points are required. Plug insertion into the normally through configured jack permits splitting and isolating of the signal for test and monitoring. Dust covers are available. Circuit patching is possible with conventional patch cords.



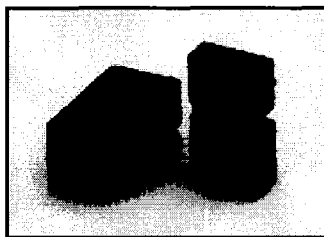
Dual Jack PC1088



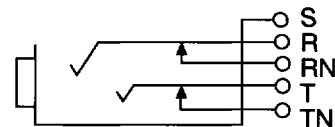
ADC's vertically designed double density Bantam PCB jack requires half the board space used by horizontal dual PCB jacks. The dual jack eliminates the need for any auxiliary board and associated hardware. The PC1088 is designed to be wave soldered with the cover attached. The locking tail holds the jack in place during assembly and wave soldering. The jack features integral board standoffs and drain holes to prevent trapping of flux solvents during washing. Circuit patching is possible with conventional patch cords.



Dual Jack PC888



Printed Circuit Board (PCB) jacks are designed to mount on printed circuit boards wherever access points are required. Plug insertion into the normally through configured jack permits splitting and isolating of the signal for test and monitoring. Dust covers are available. Circuit patching is possible with conventional patch cords.



*Ordering information follows on next page.
Specifications are found on pages 100-101.*

Components – Bantam Jacks

Bantam Printed Circuit Board Jacks Ordering Information

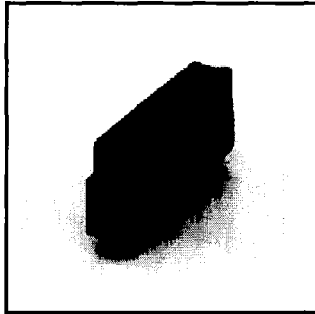
Ordering Information	
Description	Catalog Number
<p>Single Bantam PCB Jack <i>(for colors see below)</i></p> <p>Horizontal mounting design; tip/ring circuit Crimp leads Straight leads Optional dust cover</p> <p>Cover attached Crimp leads Straight leads</p>	<p>PC834J-X* PC834JS-X* PC834C-X*</p> <p>PCB-100009 PC834JCS-X*</p>
<p>Dual Bantam PCB Jack</p> <p>Vertical mounting design; features tip/ring circuits; available in black only; dust cover included; quantities in multiples of 25</p> <p>Horizontal mounting design; tip/ring circuits; available in red, blue, black and white; quantities in multiples of 25 Crimp tails Straight tails Optional dust cover</p> <p>Cover attached Crimp leads Black Straight leads Black</p> <p>Gold springs and connectors; black (standard color) Crimp leads</p>	<p>PC1088</p> <p>PC888J-X* PC888JS-X* PC888C-X*</p> <p>PCB-100029 PC888JCS-Black</p> <p>PCB13</p>

*When ordering, replace X with standard color choice: black, blue, red or white.

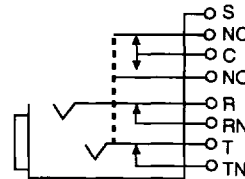
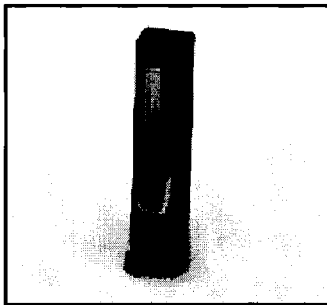
Contact ADC for a high temperature (>230°C) version of these jacks.

Components – Bantam Jacks

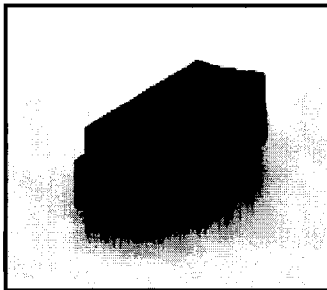
Bantam Printed Circuit Board Jacks Single Jack with Auxiliary PC835



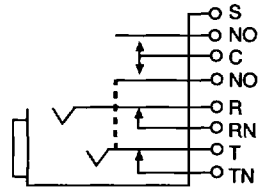
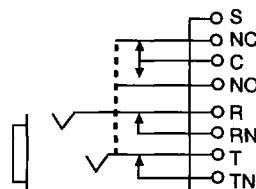
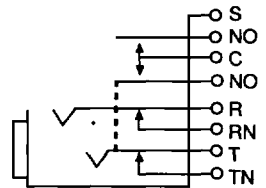
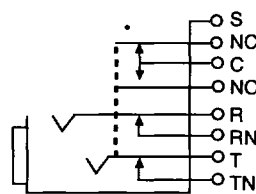
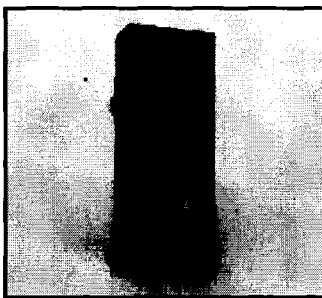
Printed Circuit Board (PCB) jacks are designed to mount on printed circuit boards wherever access points are required. Plug insertion into the normally through configured jack permits splitting and isolating of the signal for test and monitoring. PCB jacks with auxiliary transfer switches feature contacts which are used when an additional make-before-break, normally closed, contact set is required. Circuit patching is possible with conventional patch cords.



Dual Jack with Auxiliary PC885 PC886JC



Printed Circuit Board (PCB) jacks are designed to mount on printed circuit boards wherever access points are required. Plug insertion into the normally through configured jack permits splitting and isolating of the signal for test and monitoring. PCB jacks with auxiliary transfer switches feature contacts which are used when an additional make-before-break, normally closed, contact set is required. Circuit patching is possible with conventional patch cords.



PC885

PC886

*Ordering information follows on next page.
Specifications are found on pages 100-101.*

Components – Bantam Jacks

Bantam Printed Circuit Board Jacks Ordering Information

Ordering Information	
Description	Catalog Number
Single Bantam PCB Jack with Auxiliary Transfer Switches -horizontal mounting design -dust cover -available in red, blue, black or white -quantities in multiples of 50 -gold plated springs available on special order	PC835-X*
Dual Bantam PCB Jack with Auxiliary Transfer Switches -horizontal mounting design -dust cover -black -quantities in multiples of 25 -gold plated springs available on special order 1 normally open contact, 1 normally closed contact 2 normally open contacts	PC885 PC886JC

*When ordering, replace X with standard color choice: black, blue, red, or white.