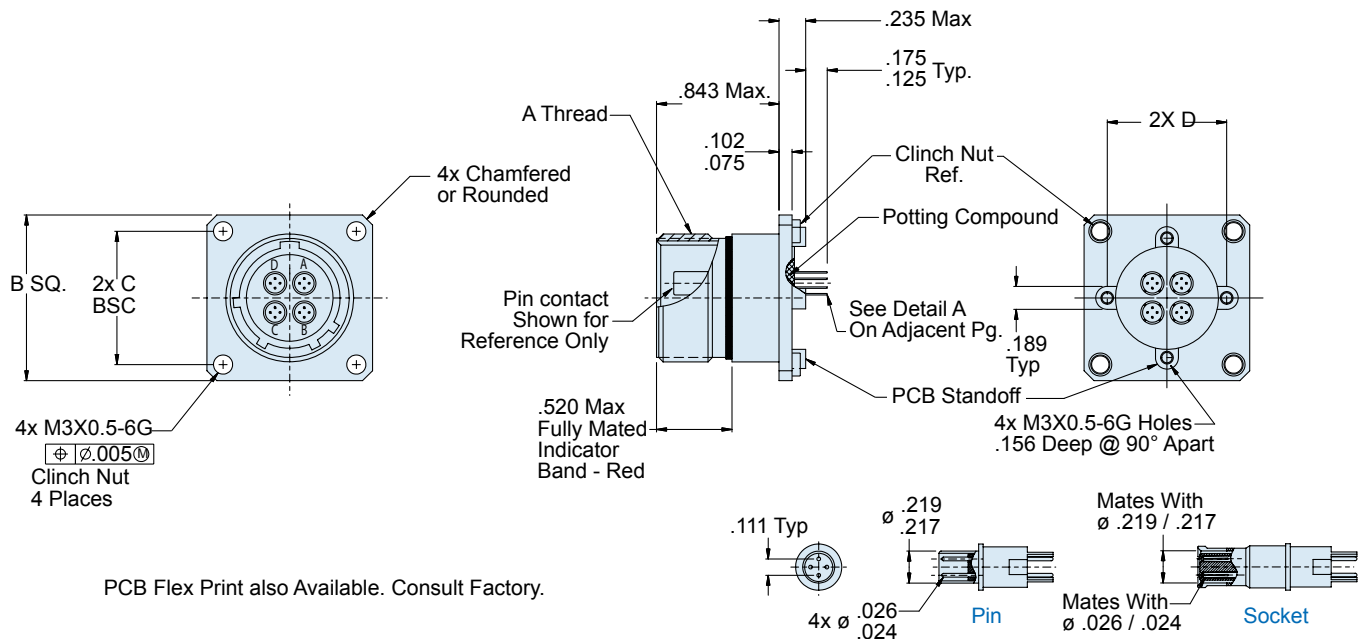
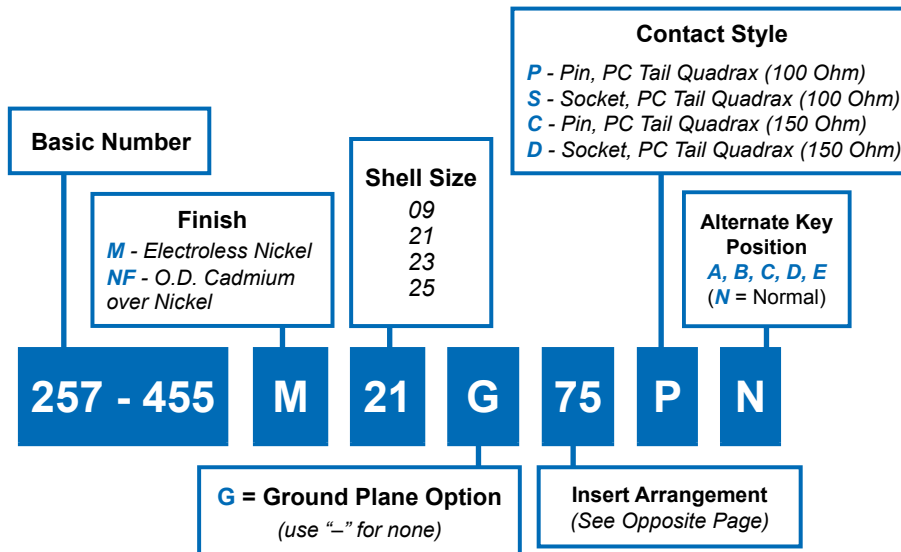




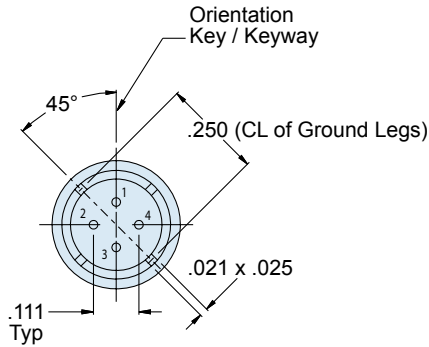
# 257-455 Box Mount Quadrax Connector With PC Tails • MIL-DTL-38999 Series III Type



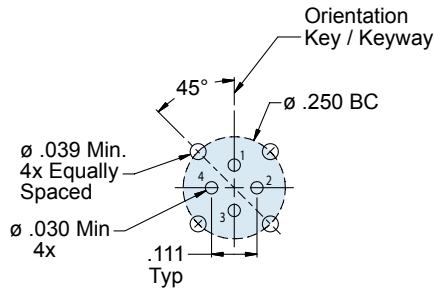
### APPLICATION NOTES

1. Assembly identified with Glenair's, part number and date code
2. Insert arrangements IAW MIL-STD-1560 and Figure I
3. Glenair 257-455 receptacle connector is designed to mate with any QPL manufacturers MIL-C-38999 series III plug connector having the same insert arrangement, polarization and the same quadrax interface dimensions shown.
4. PC contacts supplied with connector (installed) and are not sold separately.
5. Material/finish:  
Shell assembly, jam nut, lock ring—Al alloy/see Table II  
Contacts—copper alloy/gold plate  
Bayonet pins—CRES/passivate  
O-rings, interfacial & peripheral seals—silicone/N.A.  
Insulators—high grade rigid dielectric/ N.A.
6. Metric Dimensions (mm) are indicated in parentheses

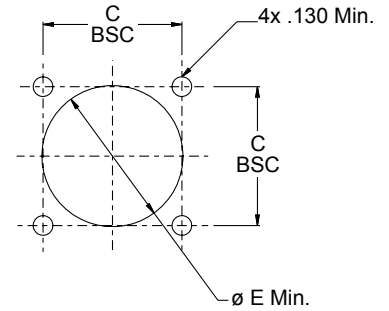
**257-455**  
**Box Mount Quadrax Connector**  
**With PC Tails • MIL-DTL-38999 Series III Type**



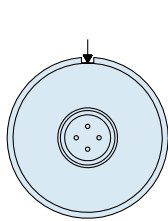
Rear View of Differential Quadrax



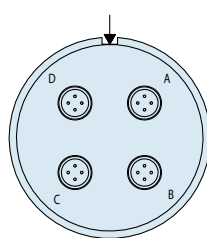
Recommended PCB Layout



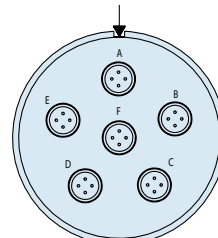
Back Panel Mounting



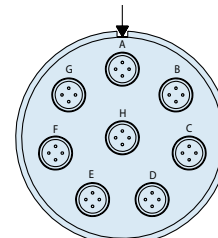
Arrangement 09-5



Arrangement 21-75

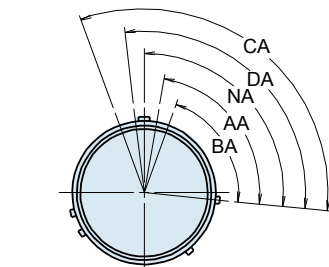


Arrangement 23-06



Arrangement 25-08

See Quadrax Contact Information on D-24



**Figure 1**  
 Master Keyway Position  
 Face View Shown  
 Insert Arrangement Does  
 Not Rotate With Master Keyway

TABLE I

Shell Size	A Thread	B Sq.	C Bsc.	D Bsc.	Ø E Min.
09	.6250-.1P-.3L-TS-2A	1.031 1.007	.719	.594	.656
21	1.3750-.1P-.3L-TS-2A	1.575 1.545	1.250	1.221	1.421
23	1.5000-.1P-.3L-TS-2A	1.701 1.677	1.375	1.360	1.546
25	1.6250-.1P-.3L-TS-2A	1.823 1.799	1.500	1.475	1.672

