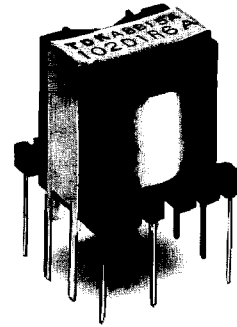
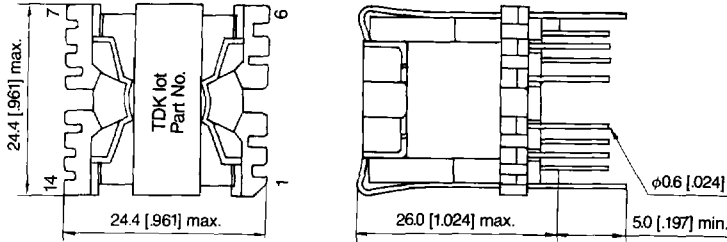


TDK Power Transformers, Power Inductors

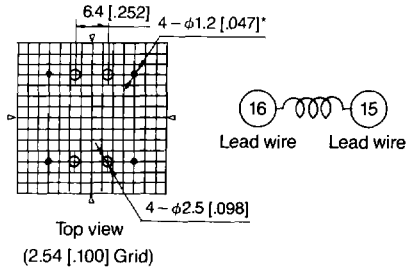
PQ20/20 CORE TYPE SHAPES AND DIMENSIONS

Lead form B, D

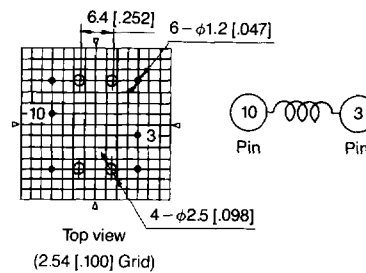


PIN CONFIGURATION

B (Lead terminal facing down)



D (Pin terminal)



*An example of recommended dimensions.

Dimensions in mm [inches]

| Part No. | Inductance (μH) $\pm 20\%$ | Rated current (A) | Unsaturated current (A) max. | DC resistance ($\text{m}\Omega$) max. | Lead wire dia. (mm) [inches] typ. | Recommended through-hole diameter (mm) [inches] |
|------------------|--|----------------------|---------------------------------|--|--------------------------------------|--|
| PQ20/20-150B15RA | 15 | 11 | 15 | 10.2 | 1.2 [.047] | 1.5 [.059] |
| PQ20/20-220B12RA | 22 | 10 | 12 | 12.3 | 1.2 [.047] | 1.5 [.059] |
| PQ20/20-270B11RA | 27 | 10 | 11 | 12.3 | 1.2 [.047] | 1.5 [.059] |
| PQ20/20-330B9R6A | 33 | 8.7 | 9.6 | 16.3 | 1.1 [.043] | 1.5 [.059] |
| PQ20/20-390B9R1A | 39 | 7.5 | 9.1 | 21.9 | 1.0 [.039] | 1.5 [.059] |
| PQ20/20-470B8R2A | 47 | 6.5 | 8.2 | 29.1 | 0.9 [.035] | 1.2 [.047] |
| PQ20/20-560B7R5A | 56 | 5.9 | 7.5 | 35.3 | 0.85 [.033] | 1.2 [.047] |
| PQ20/20-680B6R8A | 68 | 5.1 | 6.8 | 47.3 | 0.8 [.031] | 1.2 [.047] |
| PQ20/20-820B6R2A | 82 | 4.9 | 6.2 | 51.2 | 0.8 [.031] | 1.2 [.047] |
| PQ20/20-101B5R6A | 100 | 4.7 | 5.6 | 55.7 | 0.8 [.031] | 1.2 [.047] |
| PQ20/20-121B5R1A | 120 | 4.5 | 5.1 | 60.7 | 0.8 [.031] | 1.2 [.047] |
| PQ20/20-151B4R7A | 150 | 4.3 | 4.7 | 66.5 | 0.8 [.031] | 1.2 [.047] |
| PQ20/20-181B4R1A | 180 | 3.9 | 4.1 | 80.9 | 0.75 [.030] | 1.0 [.039] |
| PQ20/20-221B3R6A | 220 | 3.0 | 3.6 | 137 | 0.65 [.026] | 1.0 [.039] |
| PQ20/20-271B3R3A | 270 | 2.7 | 3.3 | 169 | 0.6 [.024] | 1.0 [.039] |
| PQ20/20-331B3R0A | 330 | 2.7 | 3.0 | 169 | 0.6 [.024] | 1.0 [.039] |
| PQ20/20-391B2R7A | 390 | 2.4 | 2.7 | 214 | 0.6 [.024] | 1.0 [.039] |
| PQ20/20-471B2R4A | 470 | 2.2 | 2.4 | 254 | 0.6 [.024] | 1.0 [.039] |
| PQ20/20-561B2R2A | 560 | 2.0 | 2.2 | 308 | 0.55 [.022] | 0.8 [.031] |
| PQ20/20-681B2R0A | 680 | 1.8 | 2.0 | 380 | 0.5 [.020] | 0.8 [.031] |
| PQ20/20-821D1R8A | 820 | 1.6 | 1.8 | 480 | 0.45 [.018] | Pin terminal |
| PQ20/20-102D1R6A | 1000 | 1.5 | 1.6 | 547 | 0.45 [.018] | Pin terminal |
| PQ20/20-122D1R6A | 1200 | 1.4 | 1.6 | 628 | 0.45 [.018] | Pin terminal |
| PQ20/20-152D1R4A | 1500 | 1.2 | 1.4 | 854 | 0.4 [.016] | Pin terminal |
| PQ20/20-182D1R3A | 1800 | 1.0 | 1.3 | 1230 | 0.35 [.014] | Pin terminal |
| PQ20/20-222D1R2A | 2200 | 0.96 | 1.2 | 1335 | 0.35 [.014] | Pin terminal |
| PQ20/20-272D1R0A | 2700 | 0.91 | 1.0 | 1485 | 0.35 [.014] | Pin terminal |
| PQ20/20-332DR96A | 3300 | 0.75 | 0.96 | 2187 | 0.3 [.012] | Pin terminal |