

SHIELDED POWER INDUCTOR

ASPI-1205S-xxx



12.0 x 12.0 x 6.0mm



RoHS
Compliant

FEATURES:

- High saturation
- Magnetic shielding
- Very small footprint
- Flat-top for pick and place
- Low resistance to keep power loss minimum

APPLICATIONS:

- Palm-top and laptop
- LCD TV
- Power line DC to DC converters used in hard drive, notebook computer

ELECTRICAL SPECIFICATIONS:

PARAMETERS

ABRACON P/N	ASPI-1205S-xxx
Operating Temperature	-40°C to +85°C
Storage Temperature	Under +25°C, Humidity <75% R.H.

Part Number ASPI-1205S-	L (μ H)	Tolerance %	R _{DC} (Ω) Max	I _{DC} (A)Max
1R3	1.3	M	0.012	8.00
2R1	2.1	M	0.014	7.00
3R1	3.1	M	0.017	6.00
4R4	4.4	M	0.020	5.00
5R8	5.8	M	0.021	4.40
7R5	7.5	M	0.024	4.20
100	10	M	0.025	4.00
120	12	M	0.027	3.50
150	15	M	0.030	3.30
180	18	M	0.034	3.00
220	22	M	0.036	2.80
270	27	M	0.051	2.30
330	33	M	0.057	2.10
390	39	M	0.068	2.00
470	47	M	0.075	1.80
560	56	M	0.110	1.70
680	68	M	0.120	1.50
820	82	M	0.140	1.40
101	100	M	0.160	1.30
121	120	M	0.170	1.10
151	150	M	0.230	1.00
181	180	M	0.290	0.90
221	220	M	0.400	0.80
271	270	M	0.460	0.75
331	330	M	0.510	0.68

Part Number ASPI-1205S-	L (μ H)	Tolerance %	R _{DC} (Ω) Max	I _{DC} (A)Max
391	390	M	0.690	0.65
471	470	M	0.770	0.58
561	560	M	0.860	0.54
681	680	M	1.200	0.48
821	820	M	1.340	0.43
102	1000	M	1.530	0.40

Note: Tolerance M=±20%
Inductance tested at 100KHz, 0.1VRMS

OPTIONS & PART IDENTIFICATION:

(Left blank if standard)

ASPI - 1205S - □□□ M - □

Inductance Code
Refer to the Table

Packaging
T Tape & Reel

ABRACON IS
ISO 9001 / QS 9000
CERTIFIED



ABRACON
CORPORATION

Visit www.abracon.com for Terms & Conditions of Sale **Revised: 08.18.09**

30332 Esperanza, Rancho Santa Margarita, California 92688

tel 949-546-8000 | fax 949-546-8001 | www.abracon.com

SHIELDED POWER INDUCTOR

ASPI-1205S-xxx

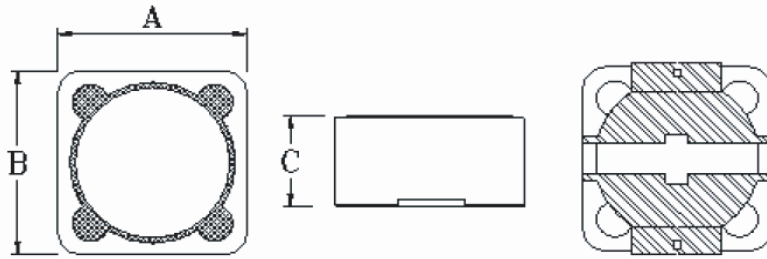


RoHS
Compliant

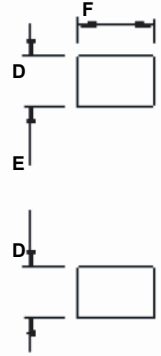


12.0 x 12.0 x 6.0mm

OUTLINE DRAWING:



Recommended Land Pattern

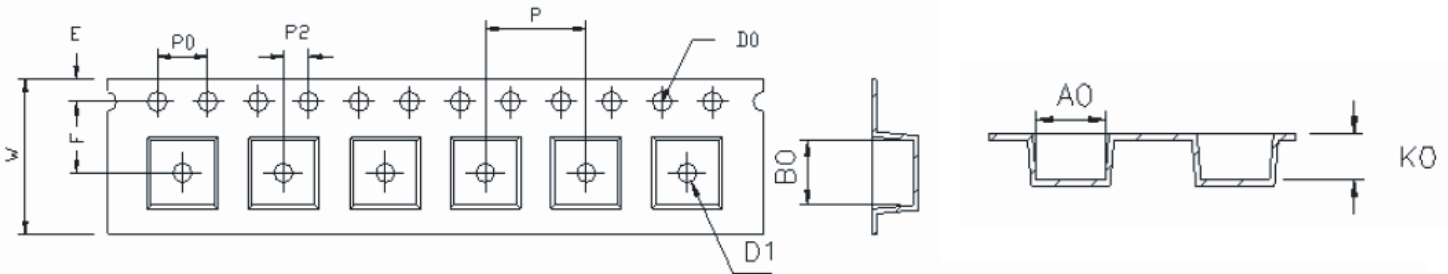


Part#	A	B	C
ASPI-1205S-xxx	0.472±0.012 (12.0±0.3)	0.472±0.012 (12.0±0.3)	0.236 max. (6.0 max.)

Part#	D	E	F
ASPI-1205S-xxx	0.110 ref. (2.8 ref.)	0.276 ref. (7.0 ref.)	0.213 ref. (5.4 ref.)

Dimension : Inches (mm)

TAPE & REEL: T = Tape and reel 500pcs/reel



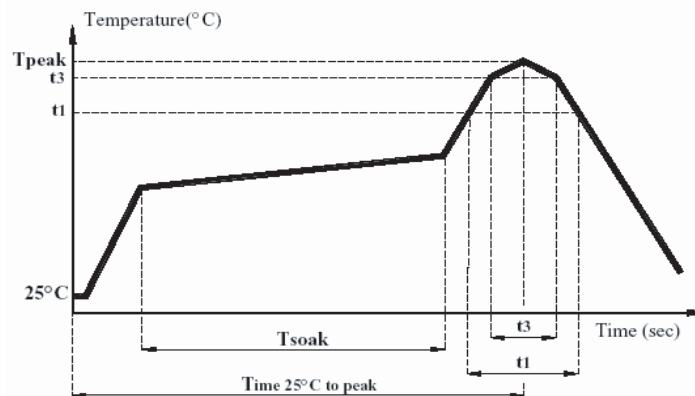
Part#	A0	B0	K0	P	P0	P2
ASPI-1205S-xxx	12.6±0.1	12.6±0.1	6.2±0.1	16.0±0.1	4.0±0.1	2.0±0.1

Part#	W	F	E	D0	D1
ASPI-1205S-xxx	24±0.3	11.5±0.1	1.75±0.1	1.5 min.	1.5 min.

series	A	B	C	D
ASPI-1205S-xxx	24.5±0.2	100±0.05	13.2±0.3	330±1.0

Dimension : mm

REFLOW PROFILE:



NOTE: Abracon manufactured products are intended for general commercial and industrial use. For applications requiring high reliability and/or presenting extreme operating environment, written consent & authorization from Abracon is required.

ABRACON IS
ISO 9001 / QS 9000
CERTIFIED



Visit www.abracon.com for Terms & Conditions of Sale **Revised: 08.18.09**
30332 Esperanza, Rancho Santa Margarita, California 92688
tel 949-546-8000 | fax 949-546-8001 | www.abracon.com