

LED®



T1 3/4 (5mm) BIPOLAR 6 CHIP LEDs

6-CHIP 160° WIDE ANGLE ILLUMINATORS

FEATURES

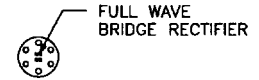
- HI-FLUX, HI-INTENSITY
- EXTRA WIDE ANGLE-160° VIEWING
- LONG LIFE - LOW POWER
- HI-SHOCK / VIBRATION RESISTANT
- EXCELLENT FOR BACKLIGHTING IN LIGHTED PUSH-BUTTON SWITCHES LCD DISPLAYS AND MORE.

LEDTRONICS PART NO.	LED COLOR	LENS COLOR	ABSOLUTE MAX. RATINGS Ta=25°C				ELECTRO-OPTICAL CHARACTERISTICS Ta=25°C				
			Pd mW	Ifp mA	If mA	Vr V	If mA typ	Iv mcd typ	Vf typ/max	IrMAX μA	λ P nm
T1 3/4 BIPOLAR 6 CHIP, 3 PARALLEL, 5.5Vf, 160° VIEWING											
BPL206CR7-5V	ULTRA RED	CLEAR	248	-	45	6	42	85	5/5.5	150	660
BPL206CR6-5.5V	HI-EFF RED	CLEAR	231	-	42	6	40	47	5/5.7	150	635
BPL206C06-5.5V	ORANGE	CLEAR	231	-	42	6	40	25	5/5.7	150	610
BPL206CY6-5.5V	YELLOW	CLEAR	231	-	42	6	40	25	5.7/7.5	150	585
BPL206CLY6-5.5V	LIME YELLOW	CLEAR	215	-	39	6	37	82	5.7/7.5	150	570
BPL206CG6-5.5V	HI-EFF GREEN	CLEAR	215	-	39	6	37	82	5.8/7.5	150	565
BPL206CPG6-5.5V	PURE GREEN	CLEAR	198	-	36	6	34	25	5.9/7.5	150	555
T1 3/4 BIPOLAR 6 CHIP, 2 PARALLEL, 7.5Vf, 160° VIEWING											
BPL206CR7-6.5V	ULTRA RED	CLEAR	225	-	30	9	28	85	6.6/7.5	100	660
BPL206CR6-7.5V	HI-EFF RED	CLEAR	218	-	29	9	27	47	7.5/10.5	100	635
BPL206C06-7.5V	ORANGE	CLEAR	218	-	29	9	27	25	7.5/10.5	100	610
BPL206CY6-7.5V	YELLOW	CLEAR	218	-	29	9	27	25	7.8/10.5	100	585
BPL206CLY6-7.5V	LIME YELLOW	CLEAR	195	-	26	9	24	82	7.8/10.5	100	570
BPL206CG6-7.5V	HI-EFF GREEN	CLEAR	195	-	26	9	24	82	7.8/10.5	100	565
BPL206CPG6-7.5V	PURE GREEN	CLEAR	180	-	24	9	22	25	8/10.5	100	555
T1 3/4 BIPOLAR 6 CHIP, SERIES, 13.5Vf, 160° VIEWING											
BPL206CR7-11.5V	ULTRA RED	CLEAR	203	-	15	18	13	85	11.5/13.5	50	660
BPL206CR6-13.5V	HI-EFF RED	CLEAR	189	-	14	18	12	47	13.5/15.5	50	635
BPL206C06-13.5V	ORANGE	CLEAR	189	-	14	18	12	25	13.5/15.5	50	610
BPL206CY6-13.5V	YELLOW	CLEAR	189	-	14	18	12	25	13.5/15.5	50	585
BPL206CLY6-13.5V	LIME YELLOW	CLEAR	176	-	13	18	11	82	13.5/15.5	50	570
BPL206CG6-13.5V	HI-EFF GREEN	CLEAR	176	-	13	18	11	82	13.5/15.5	50	565
BPL206CPG6-13.5V	PURE GREEN	CLEAR	162	-	12	10	10	25	14.5/15.5	50	555
BPL206CW6-13.5V	HI-EFF RED/GRN	CLEAR	192	-	16	18	14	75	12.6/14.0	50	635/565

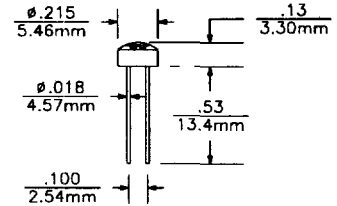
Topr = -20°C TO +60°C
Tstg = -30°C TO +100°C

Lead Soldering Temp. 260°C max., 5 sec.
1/16" (1.6mm) from body

BPL206

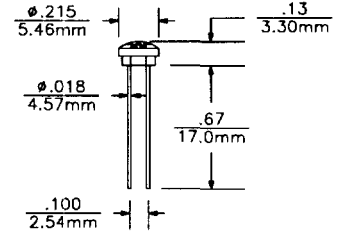


(OLD VERSION)



WILL BE REPLACED WITH NEW VERSION (BELOW) AFTER STOCK IS DEPLETED

(NEW VERSION)

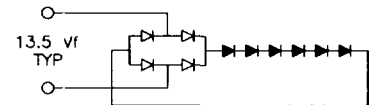


WILL REPLACE OLD VERSION (ABOVE) AFTER CURRENT STOCK IS DEPLETED

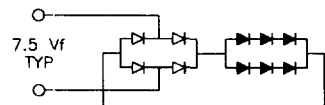
MATERIAL:

LENS - CLEAR EPOXY
BASE - CERAMIC
LEADS - KOVAR, AU-PLATED

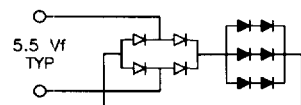
SERIES, BIPOLAR CIRCUIT



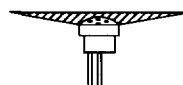
2-PARALLEL, BIPOLAR CIRCUIT



3-PARALLEL, BIPOLAR CIRCUIT



MULTICHIP (6 CHIP)
(160°)
L206CX6



ALL THESE DEVICES ARE IDEALLY SUITED FOR REPLACING INCANDESCENTS. SEE LEDTRONICS BASED LEDS FOR DIRECT REPLACEMENT OF INDUSTRY STANDARD INCANDESCENTS. SIZES AVAILABLE: T1 3/4, T3 3/4, T2, S6, 2 PIN CARTRIDGE, BUILT-IN RESISTORS FOR VOLTAGES 4V TO 120VAC AND 130VDC.

SPECIFICATIONS ARE SUBJECT TO CHANGE WITHOUT NOTICE