

**High Temperature  
Straight Board Mount Connectors**

**SPECIFICATIONS:**

**MATERIALS AND PLATINGS**

Shells	Steel/nickel plated
Contacts	Precision formed copper alloy
Contact Plating	Gold over nickel

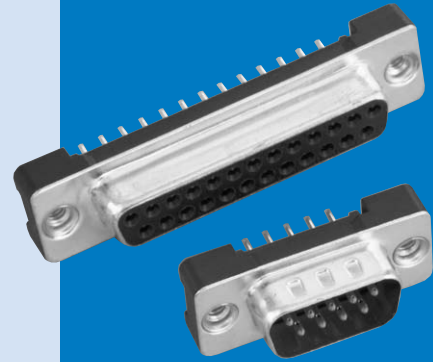
**ELECTRICAL DATA**

Current Rating	5 amps
Voltage Rating	600 V
Dielectric	Glass filled thermoplastic, black, UL 94 VO
Contact Resistance	10 milliohms (max.)

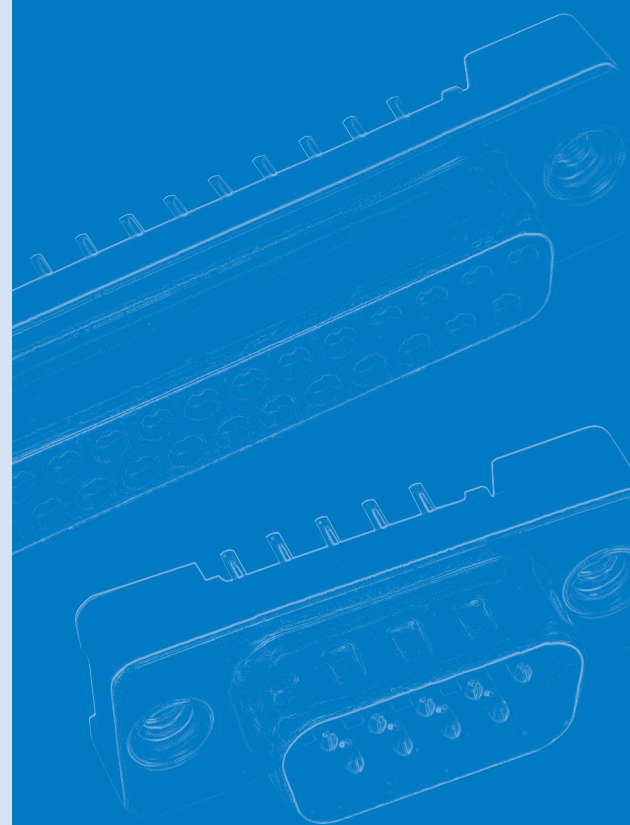
**CLIMATIC DATA**

Temperature Range	Environmental: -67°F (-55°C) to 302°F (150°C)
Process Compatibility	IR-Air Convection 500°F (260°C) for 20 seconds

**617S SERIES**

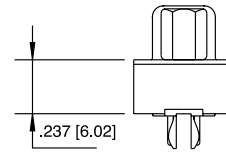
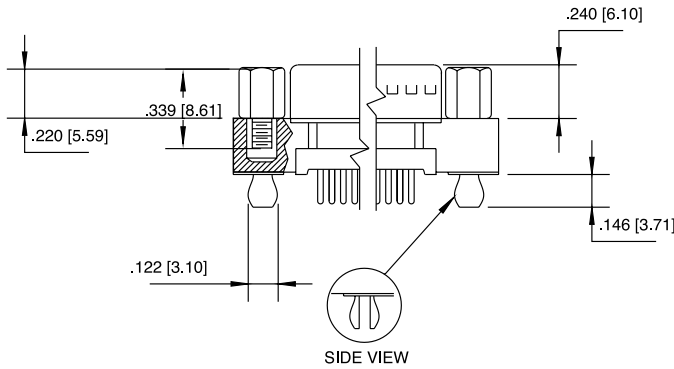
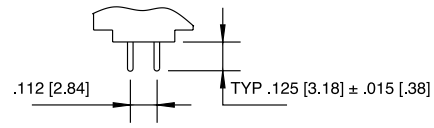
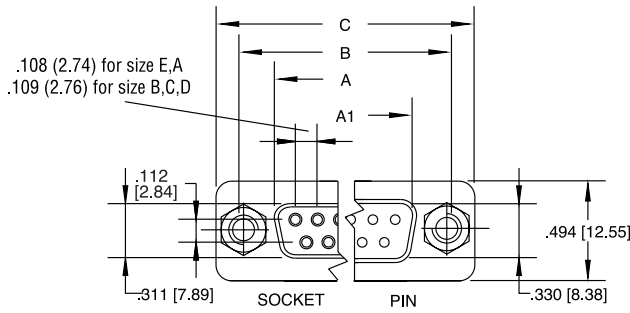


Amphenol's high temperature, low profile D-Sub connector gives you a high quality, reliable commercial connector to meet today's market demands.

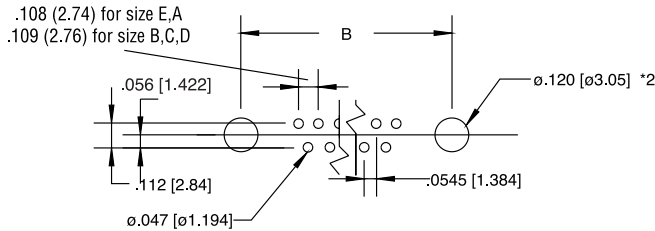


INCHES (MM)

**DIMENSIONS**



CONTACTS	A SOCKET	A1 PIN	B	C
9	.642 [16.30]	.666 [16.92]	.984 [25.0]	1.213 [30.8]
15	.969 [24.6]	.994 [25.25]	1.311 [33.3]	1.543 [39.2]
25	1.508 [38.3]	1.534 [38.96]	1.854 [47.1]	2.091 [53.1]
37	2.157 [54.8]	2.182 [55.42]	2.50 [63.5]	2.732 [69.4]



**ORDERING INFORMATION**

**617S - C - 0XX - X - XX - X - XX**

<b>Series</b>	_____	<b>Code</b>	<b>Housing Characteristics</b>
<b>Code</b>	<b>Boardlock</b>	20	Tin plated receptacle
C	Split arrowhead boardlock	21	Tin plated
O	No boardlock		
<b>Number of contacts</b>	_____	<b>Code</b>	<b>Panel Mounting Options</b>
9, 15, 25 or 37		1	#4-40 threaded hole
		2	#4-40 threaded hole with female screwlock
		3	M-3 threaded hole
<b>Code</b>	<b>Gender</b>		
P	Pin (male)		
S	Socket (female)		
<b>Code</b>	<b>Contact Plating</b>		
BJ	Engagement area 10µ" (2.54µ), terminal end area 100µ"/200µ" (2.54µ/5.08µ) -tin/lead, underplate of 50µ" (1.27µ) nickel		
AJ	Engagement area 30µ" (.76µ) gold, terminal end area 100µ"/200µ" (2.54µ/5.08µ) -tin/lead, underplate of 50µ" (1.27µ) nickel		