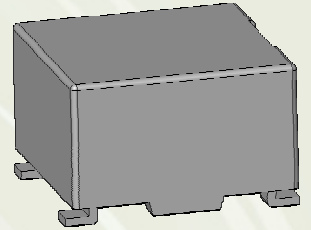


Common Mode Choke CPFC8D55 / MS



■ Features

- ◎ 9.3×9.0mm Max.(L×W), 6.0mm Max. Height.
- ◎ Operating temperature range: -25°C~+85°C.
- ◎ RoHS Compliance.
- ◎ Custom design is available.

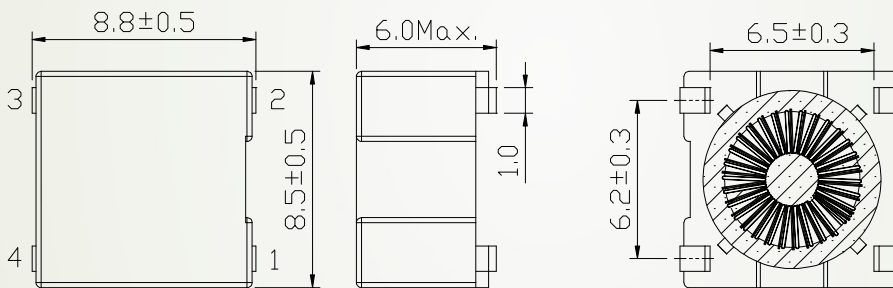


■ Applications

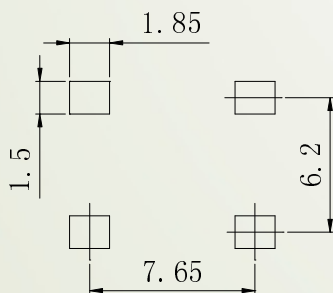
Ideally used as EMC and xDSL CO common mode choke.

■ Shapes and Dimensions/Recommended Land Patterns (mm)

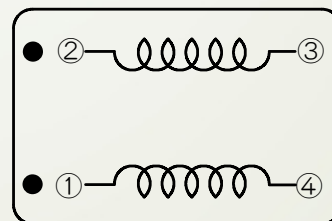
◆ Dimensions



◆ Land pattern



◆ Schematics (Bottom)



● Mark of polarity

Common Mode Choke CPFC8D55 / MS



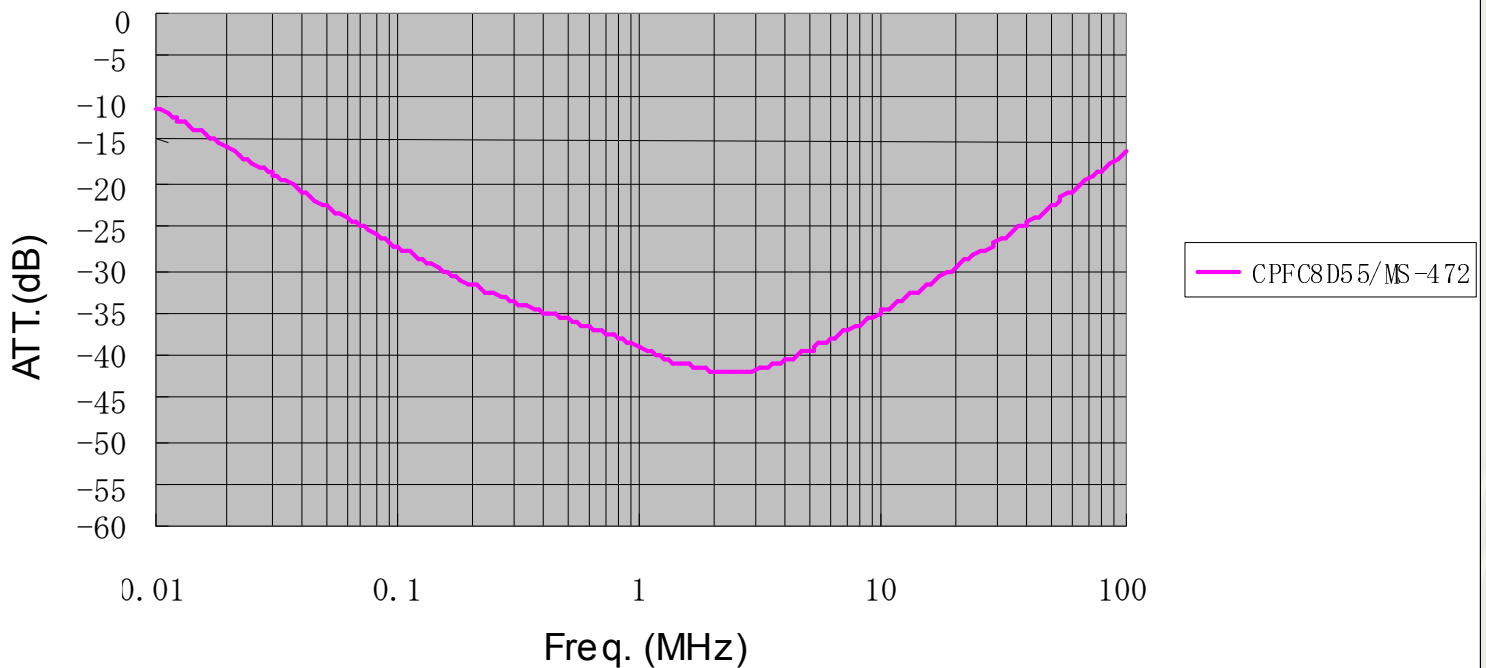
Electrical Characteristics Specification.

| Part Name | Core Material | Stamp | Inductance (1-4),(2-3) @ 100kHz | Common mode attenuation(1-4,2-3) | D.C.R. (1-2) ※ | Isolation voltage (3-4), 1 minute |
|-----------------|---------------|-------|---------------------------------|--|--------------------------------|-----------------------------------|
| CPFC8D55/MS-472 | Mn-Zn | 472 | 2.0mHMin(4.7mH) | 20dB(Typ.)@100kHz 40dB(Typ.)@1MHz 35dB(Typ.)@10MHz | 1.0Ω Max. at 20°C (3-4)shorted | 500Vrms AC |

※ . D.C.R. is measured by 2 lines as series because impedance will be deteriorated when D.C.R. is measured by 1 line.

Attenuation Characteristics Curve.

CPFC8D55/MS-472 CMC ATTENUATION

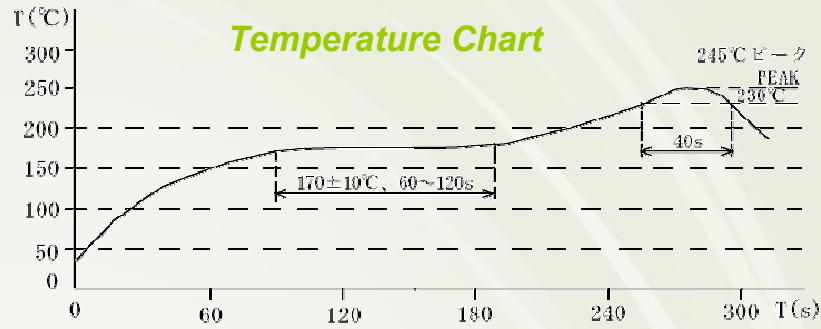
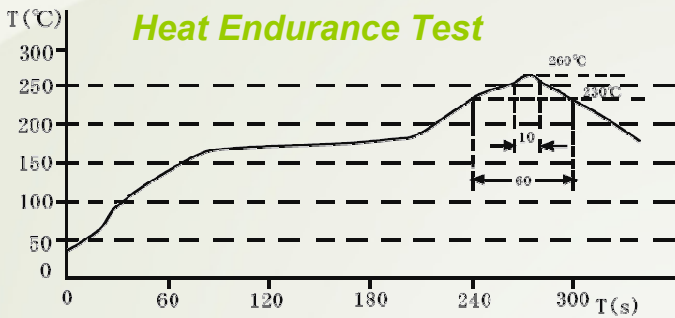


Common Mode Choke CPFC8D55 / MS

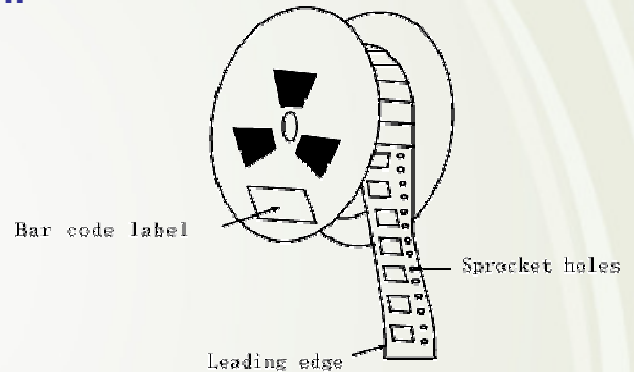
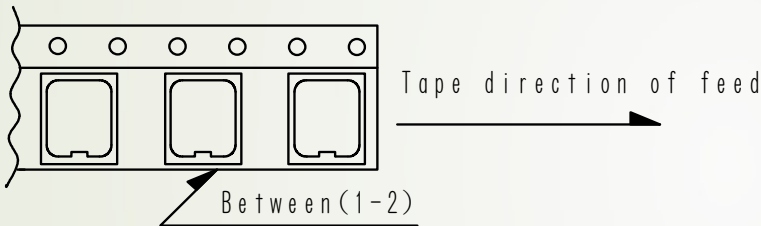


sumida

Recommended Reflow Condition.



Packaging with Embossed tape and reel.



For More Information

Hong Kong

Tel.+852-2880-6688
FAX.+852-2565-9600

Shanghai

Tel.+86-021-58363299
FAX.+86-021-58363266

Shenzhen

Tel.+86-755-82910228
FAX.+86-755-82910338

Taiwan(Taipei)

Tel.+886-2-27065228
FAX.+886-2-27065229

Japan(Tokyo)

Tel.+81-3-5202-7112
FAX.+81-3-5202-7105

Korea(Seoul)

Tel.+82-2-6237-0777
FAX.+82-2-6237-0778

Singapore

Tel.+65-6296-3388
FAX.+65-6296-3390

Malaysia

Tel.+60-3-8733-0900
FAX.+60-3-8737-7384

America(Chicago)

Tel.+1-847-545-6700
FAX.+1-847-545-6720

America(California)

Tel.+1-408-321-9660
FAX.+1-408-321-9308

sumida