

**PLEASE CHECK WWW.MOLEX.COM FOR LATEST PART INFORMATION**

**Part Number:** **0192020051**  
**Status:** **Active**  
**Description:** BUTT SPLICE NYLAKRIMP TAPED (CS-N-346T)

**Documents:**

[Drawing \(PDF\)](#) [RoHS Certificate of Compliance \(PDF\)](#)

**Agency Certification**

CSA LR18689  
 UL E32244

**General**

Product Family Splices  
 Series 19202  
 Crimp Quality Equipment Yes  
 Mil-Spec N/A  
 Product Name Butt, NylaKrimp™

**Physical**

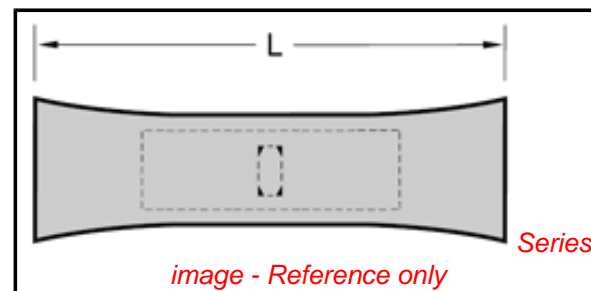
Barrel Type Closed - Brazed  
 Flammability 94V-2  
 Insulation Nylon (PA)  
 Packaging Type Adhesive Tape on Reel  
 Wire Size AWG 10, 12

**Material Info**

Old Part Number CS-N-346T

**Reference - Drawing Numbers**

Sales Drawing 60002-11C, 6000211C



**EU RoHS**

**ELV and RoHS  
 Compliant**

**REACH SVHC**

Not Reviewed

**Halogen-Free**

**Status**

**Not Reviewed**

**China RoHS**



**Need more information on product  
 environmental compliance?**

Email [productcompliance@molex.com](mailto:productcompliance@molex.com)  
 For a multiple part number RoHS Certificate of  
 Compliance, [click here](#)

Please visit the [Contact Us](#) section for any  
 non-product compliance questions.

**Search Parts in this Series**

19202Series

**Application Tooling | FAQ**

*Tooling specifications and manuals are  
 found by selecting the products below.  
 Crimp Height Specifications are then  
 contained in the Application Tooling  
 Specification document.*

**Global**

**Description** **Product #**

ATP Perishable Tool 0192880289

Kit Used in ATP

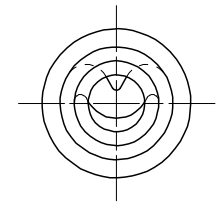
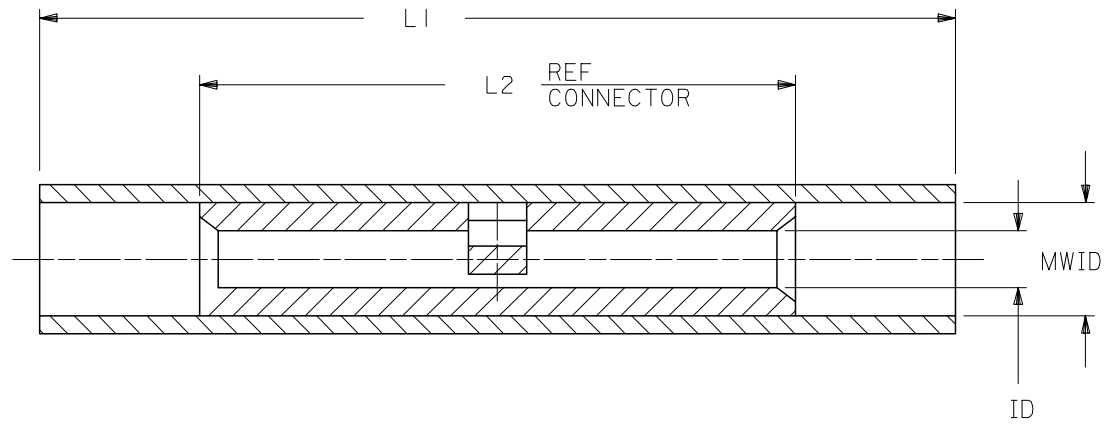
Presses that Process

Product on Tape

PART NO.	INSULATION COLOR	WIRE SIZE	ID	L1 MAX	L2 MAX.	MWID
AS-N-345	RED	22-18	.059	1.035	.675	.130
BS-N-331	BLUE	16-14	.091	1.080	.675	.140
CS-N-346	YELLOW	12-10	.138	1.300	.827	.223

(B)

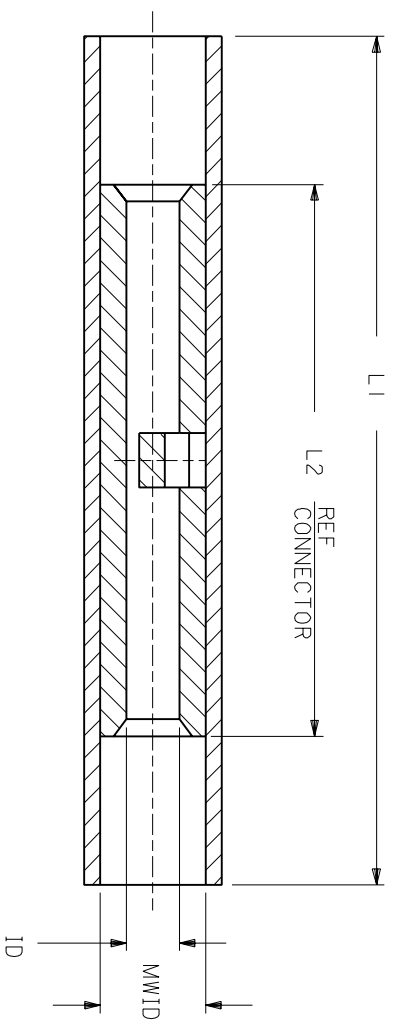
NOTES:  
 1. MATERIAL:  
 INSULATION: NYLON  
 CONNECTOR: TIN PLATED SEAMLESS COPPER  
 3. IF NECESSARY: SLIGHT FLARE ON ONE END ACCEPTABLE FOR ASSEMBLY PURPOSES.



# CUSTOMER DRAWING

REVISED & REDRAWN EC NO: B DRWN: L SHADECK 2005/06/13 CHKD: R DEROSS 2005/06/21 APPR: R DEROSS 2005/06/21	DESCRIPTION REV	QUALITY SYMBOLS ▽=0 ▽=0	GENERAL TOLERANCES (UNLESS SPECIFIED) <table border="1"> <thead> <tr> <th></th> <th>mm</th> <th>INCH</th> </tr> </thead> <tbody> <tr> <td>4 PLACES</td> <td>± ---</td> <td>± ---</td> </tr> <tr> <td>3 PLACES</td> <td>± ---</td> <td>± ---</td> </tr> <tr> <td>2 PLACES</td> <td>± ---</td> <td>± ---</td> </tr> <tr> <td>1 PLACE</td> <td>± ---</td> <td>± ---</td> </tr> </tbody> </table>		mm	INCH	4 PLACES	± ---	± ---	3 PLACES	± ---	± ---	2 PLACES	± ---	± ---	1 PLACE	± ---	± ---	DIMENSION STYLE IN/MM	SCALE 4:1	DESIGN UNITS INCH	THIRD ANGLE PROJECTION
			mm	INCH																		
		4 PLACES	± ---	± ---																		
		3 PLACES	± ---	± ---																		
2 PLACES	± ---	± ---																				
1 PLACE	± ---	± ---																				
DRAFT WHERE APPLICABLE MUST REMAIN WITHIN DIMENSIONS			DRAWN BY EMF	DATE 07/03/91	TITLE NYLAKRIMP BUTT CONNECTOR																	
			CHECKED BY JM	DATE 07/03/91	MOLEX INCORPORATED																	
			APPROVED BY FP	DATE 07/03/91	MATERIAL NO. SEE TABLE	DOCUMENT NO. 60002-11C	SHEET NO. 1 OF 1															

PART NO.	INSULATION COLOR	WIRE SIZE	ID	L1 MAX	L2 MAX	MWID
AS-N-345	RED	22-18	.059	1.035	.675	.130
BS-N-331	BLUE	16-14	.091	1.080	.675	.160
CS-N-346	YELLOW	12-10	.138	1.300	.827	.223



NOTES:  
 1. MATERIAL:  
 INSULATION: NYLON  
 CONNECTOR: TIN PLATED SEAMLESS COPPER  
 3. IF NECESSARY: SLIGHT FLARE ON ONE END ACCEPTABLE FOR ASSEMBLY PURPOSES.

# CUSTOMER DRAWING

DIMENSIONS SHOWN (METRIC) INCH  
 UNLESS OTHERWISE SPECIFIED  
 TOLERANCES: ANGULAR = 1/2°

	INCH	METRIC
3 PLACE	± .005	± 0.13
2 PLACE	± .01	± 0.25
1 PLACE	± ---	± ---

DRAFT WHERE APPLICABLE MUST REMAIN WITHIN DIMENSIONS

DRWG. BY	EMF	CHK'D. BY	JM
APP'D. BY	FP	SCALE	NO: NE

DRWG. NO. 60002-11C

REVISE ONLY ON CAD SYSTEM

NYLAKRIMP BUTT CONNECTOR

molex **ETC INC.** PINELLAS PARK, FLA. 33781 U.S.A. SHEET NO. 1 OF 1 DATE 91/07/03

PART NO. 60002-11C  
 FILE NAME SEE TABLE  
 THIS DRAWING CONTAINS INFORMATION THAT IS PROPRIETARY TO MOLEX-ETC INC. AND SHOULD NOT BE USED WITHOUT WRITTEN PERMISSION.

DRWG. NO.	60002-11C	DIV.	ET	SIZE	A
-----------	-----------	------	----	------	---

LTR.	REVISIONS
A	ADD P/N AND UPDATE DRAWINGS ET80539 12/18 HEB