

PLEASE CHECK WWW.MOLEX.COM FOR LATEST PART INFORMATION

Part Number: [0009508163](#)
Status: **Active**
Overview: [kk](#)
Description: 3.96mm (.156") Pitch KK® Crimp Terminal Housing, Friction Ramp, 16 Circuits

Documents:

[3D Model](#) [Product Specification PS-08-50 \(PDF\)](#)
[Drawing \(PDF\)](#) [RoHS Certificate of Compliance \(PDF\)](#)
[Packaging Specification \(PDF\)](#)

Agency Certification

CSA LR19980

General

Product Family Crimp Housings
 Series [41695](#)
 Overview [kk](#)
 Product Name KK®

Physical

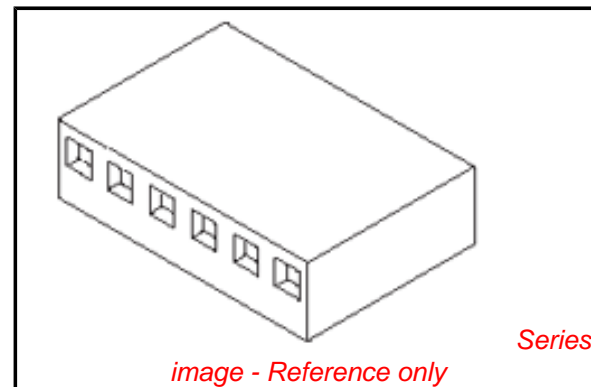
Breakaway No
 Circuits (maximum) 16
 Color - Resin Natural
 Flammability 94V-0
 Gender Female
 Glow-Wire Compliant No
 Keying to Mating Part None
 Lock to Mating Part Yes
 Material - Resin Polyester
 Number of Rows 1
 Packaging Type Bag
 Panel Mount No
 Pitch - Mating Interface (in) 0.156 In
 Pitch - Mating Interface (mm) 3.96 mm
 Polarized to Mating Part Yes
 Temperature Range - Operating 0°C to +75°C

Material Info

Old Part Number 41695-N-D16

Reference - Drawing Numbers

Packaging Specification PK-41695-003
 Product Specification PS-08-50
 Sales Drawing SD-41695



EU RoHS

ELV and RoHS Compliant
REACH SVHC Contains SVHC: No
Halogen-Free Status
Not Reviewed

China RoHS



Need more information on product environmental compliance?

Email productcompliance@molex.com
 For a multiple part number RoHS Certificate of Compliance, [click here](#)

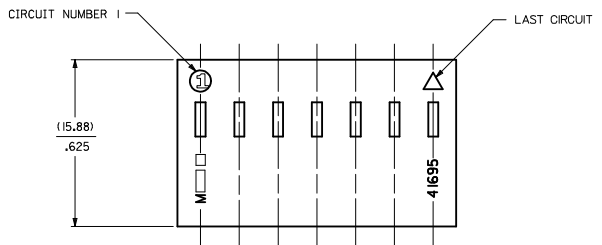
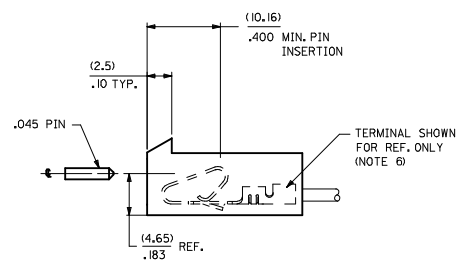
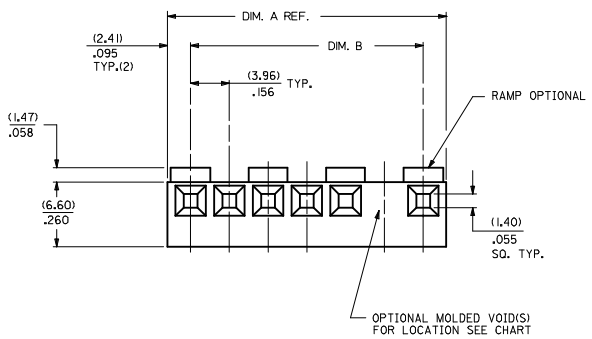
Please visit the [Contact Us](#) section for any non-product compliance questions.

Search Parts in this Series

[41695Series](#)

Use With

KK® Crimp Terminal [2478](#) , [2578](#) , [8818](#).
 Trifurcon™ Crimp Terminal [7258](#) , [6438](#) , [6838](#)



41695 - * - * N - ##

MATERIAL CODE
N=MOLDED NATURAL
B=BLACK
G=GLow WIRE

VOID CODE

BLANK=NO VOIDS
NO.=NO. CORRESPONDS TO CKT. NO. VOIDED
MULT. VOIDS=START WITH 51

NO. OF CKTS.
SEE NOTE 10

- NOTES:
- MATERIAL: N - GLASS FILLED POLYESTER, UL94V-0, MOLDED NATURAL
B - GLASS FILLED POLYESTER, UL94V-0, MOLDED BLACK
G - UL94V-0 PA6 NYLON , IEC 60335-1, 4th EDITION GLOW WIRE CAPABLE, COLOR: BLACK
 - FINISH: SEE TERMINAL DRAWINGS
 - PRODUCT SPECIFICATION: PS-08-50 AND PS-40-02
 - PACKAGING INFORMATION: SEE LEGEND
 - MATES WITH (3.96)/.156 CENTER HEADERS AND (1.14)/.045 SQUARE OR ROUND PINS
 - HOUSING ACCEPTS STANDARD TERMINAL NOS.:
2478 (18-24 AWG) WITH (2.79)/.110 MAX. INSULATION DIA.
2578 (22-26 AWG) WITH (1.65)/.065 MAX. INSULATION DIA.
OR TRIFURCON TERMINAL NOS.:
6438 (18-22 AWG) WITH (2.79)/.110 MAX. INSULATION DIA.
6638 (18-24 AWG) WITH (2.79)/.110 MAX. INSULATION DIA.
7258 (22-26 AWG) WITH (1.65)/.065 MAX. INSULATION DIA.
 - BOW (.006 MM/MM) / .006 IN/IN.
 - (0.13)/.005 MAX. FLASH ALLOWED ALONG DIMENSION B AND IN LOCKING WINDOW.
 - THIS PART CONFORMS TO CLASS B REQUIREMENTS OF COSMETIC SPECIFICATION PS-45499-002.
 - CIRCUIT SIZES 13 THROUGH 20 ARE NOT AVAILABLE IN G MATERIAL.

| OPTION CODE | | | | |
|-------------|---------------|----------|-----------------------|-----|
| CODE | RAMP | POLARIZE | PACKAGING | RIB |
| A | NO | NO | BULK PER PK-41695-001 | NO |
| B | YES | NO | BULK PER PK-41695-002 | NO |
| D | YES | YES | BULK PER PK-41695-003 | NO |
| E | YES | NO | BULK PER PK-41695-002 | YES |
| G | END RAMP ONLY | YES | BULK PER PK-41695-003 | NO |

| NO. OF CKTS SEE NOTE 10 | DIM. A | DIM. B |
|-------------------------|---------------|------------------------|
| 1 | NOT AVAILABLE | |
| 2 | (8.79) .348 | (3.96+.05) .156+.002 |
| 3 | (12.75) .502 | (7.92+.08) .312+.003 |
| 4 | (16.71) .656 | (11.89+.08) .468+.003 |
| 5 | (20.67) .814 | (15.85+.08) .624+.003 |
| 6 | (24.64) .970 | (19.81+.10) .780+.004 |
| 7 | (28.60) 1.126 | (23.77+.10) .936+.004 |
| 8 | (32.56) 1.282 | (27.74+.10) 1.092+.004 |
| 9 | (36.53) 1.438 | (31.70+.10) 1.248+.004 |
| 10 | (40.49) 1.594 | (35.66+.15) 1.404+.006 |
| 11 | (44.45) 1.750 | (39.62+.15) 1.560+.006 |
| 12 | (48.41) 1.906 | (43.59+.15) 1.716+.006 |
| 13 | (52.37) 2.062 | (47.55+.15) 1.872+.006 |
| 14 | (56.34) 2.218 | (51.51+.18) 2.028+.007 |
| 15 | (60.30) 2.374 | (55.47+.18) 2.184+.007 |
| 16 | (64.26) 2.530 | (59.44+.20) 2.340+.008 |
| 17 | (68.22) 2.686 | (63.40+.20) 2.496+.008 |
| 18 | (72.19) 2.842 | (67.36+.23) 2.652+.009 |
| 19 | (76.15) 2.998 | (71.32+.23) 2.808+.009 |
| 20 | (80.11) 3.154 | (75.28+.23) 2.964+.009 |

| | | | | | | | |
|---|-------------------------------|--|---|--|--------------|----------------------|------------------------|
| REMOVE 41695-2003 IEC NO: UCF2010-0004 DRAWN BY: SKOWRONSKI CHECKED BY: PATEL APPROVED BY: ENZ DATE: 04/05/18 APPR:FSM/TH | QUALITY SYMBOLS ▽=0 ▽=0 | GENERAL TOLERANCES (UNLESS SPECIFIED) mm INCH | | DIMENSION STYLE MM/IN | SCALE --- | DESIGN UNITS INCH | THIRD ANGLE PROJECTION |
| | | 4 PLACES ± --- ± --- 3 PLACES ± --- ± .010 2 PLACES ± 0.25 ± .014 1 PLACE ± 0.36 ± --- ANGULAR ±1/2° | DRAWN BY: SKOWRONSKI DATE: 04/05/18 CHECKED BY: PATEL DATE: 04/05/18 APPROVED BY: ENZ DATE: 04/05/18 | TITLE (3.96)/.156 CENTERLINE CONNECTOR HOUSING FOR KK CRIMP TERMINALS | | | |
| DRAFT WHERE APPLICABLE MUST REMAIN WITHIN DIMENSIONS | | MATERIAL NO. SEE CHART | | MOLEX INCORPORATED | | SHEET NO. 1 OF 4 | |

| 41695-N-AN-* | | |
|--------------|---------------|-------|
| PART NO. | ENG. NO. | VOIDS |
| | NOT AVAILABLE | |
| 09-50-8020 | 41695-N-A2 | |
| 09-50-8030 | 41695-N-A3 | |
| 09-50-8040 | 41695-N-A4 | |
| 09-50-8050 | 41695-N-A5 | |
| 09-50-8060 | 41695-N-A6 | |
| 09-50-8070 | 41695-N-A7 | |
| 09-50-8080 | 41695-N-A8 | |
| 09-50-8090 | 41695-N-A9 | |
| 09-50-8100 | 41695-N-A10 | |
| 09-50-8110 | 41695-N-A11 | |
| 09-50-8120 | 41695-N-A12 | |
| 09-50-8130 | 41695-N-A13 | |
| 09-50-8140 | 41695-N-A14 | |
| 09-50-8150 | 41695-N-A15 | |
| 09-50-8160 | 41695-N-A16 | |
| 09-50-8170 | 41695-N-A17 | |
| 09-50-8180 | 41695-N-A18 | |
| 09-50-8190 | 41695-N-A19 | |
| 09-50-8200 | 41695-N-A20 | |
| 09-50-9085 | 41695-N-A8-2 | 2 |
| 41695-0001 | 41695-N-A6-3 | 3 |
| 41695-0002 | 41695-N-A5-4 | 4 |

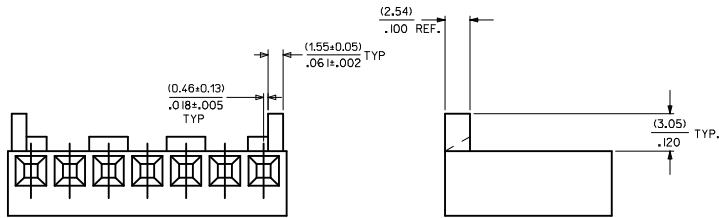
| 41695-N-BN-* | | |
|--------------|----------------|-------|
| PART NO. | ENG. NO. | VOIDS |
| | NOT AVAILABLE | |
| 09-50-8021 | 41695-N-B2 | |
| 09-50-8031 | 41695-N-B3 | |
| 09-50-8041 | 41695-N-B4 | |
| 09-50-8051 | 41695-N-B5 | |
| 09-50-8061 | 41695-N-B6 | |
| 09-50-8071 | 41695-N-B7 | |
| 09-50-8081 | 41695-N-B8 | |
| 09-50-8091 | 41695-N-B9 | |
| 09-50-8101 | 41695-N-B10 | |
| 09-50-8111 | 41695-N-B11 | |
| 09-50-8121 | 41695-N-B12 | |
| 09-50-8131 | 41695-N-B13 | |
| 09-50-8141 | 41695-N-B14 | |
| 09-50-8151 | 41695-N-B15 | |
| 09-50-8161 | 41695-N-B16 | |
| 09-50-8171 | 41695-N-B17 | |
| 09-50-8181 | 41695-N-B18 | |
| 09-50-8191 | 41695-N-B19 | |
| 09-50-8201 | 41695-N-B20 | |
| 09-50-9030 | 41695-N-B3-2 | 2 |
| | 41695-N-B5-2 | 2 |
| | 41695-N-B9-2 | 2 |
| | 41695-N-B11-2 | 2 |
| | 41695-N-B12-2 | 2 |
| | 41695-N-B14-2 | 2 |
| 09-50-9150 | 41695-N-B15-14 | 14 |
| 09-50-9060 | 41695-N-B6-5 | 5 |
| 09-50-9070 | 41695-N-B7-6 | 6 |
| 09-50-9071 | 41695-N-B7-2 | 2 |
| 09-50-9040 | 41695-N-B4-3 | 3 |
| 09-50-9090 | 41695-N-B9-7 | 7 |
| | 41695-N-B14-13 | 13 |
| 09-50-9136 | 41695-N-B13-5 | 5 |
| 09-50-9137 | 41695-N-B13-8 | 8 |
| 09-50-9050 | 41695-N-B5-51 | 2,4 |
| 09-50-9061 | 41695-N-B6-3 | 3 |
| 09-50-9080 | 41695-N-B8-2 | 2 |

| 41695-G-AN-* | | |
|--------------|-------------|-------|
| PART NO. | ENG. NO. | VOIDS |
| 41695-2032 | 41695-G-A02 | |
| 41695-2033 | 41695-G-A03 | |
| 41695-2034 | 41695-G-A04 | |
| 41695-2035 | 41695-G-A05 | |
| 41695-2036 | 41695-G-A06 | |
| 41695-2037 | 41695-G-A07 | |
| 41695-2038 | 41695-G-A08 | |
| 41695-2039 | 41695-G-A09 | |
| 41695-2040 | 41695-G-A10 | |
| 41695-2041 | 41695-G-A11 | |
| 41695-2042 | 41695-G-A12 | |

| 41695-G-BN-* | | |
|--------------|-------------|-------|
| PART NO. | ENG. NO. | VOIDS |
| 41695-2000 | 41695-G-B02 | |
| 41695-2005 | 41695-G-B03 | |
| 41695-2002 | 41695-G-B04 | |
| 41695-2006 | 41695-G-B05 | |
| 41695-2007 | 41695-G-B06 | |
| 41695-2008 | 41695-G-B07 | |
| 41695-2009 | 41695-G-B08 | |
| 41695-2010 | 41695-G-B09 | |
| 41695-2011 | 41695-G-B10 | |
| 41695-2012 | 41695-G-B11 | |
| 41695-2013 | 41695-G-B12 | |

OPTION CODE D

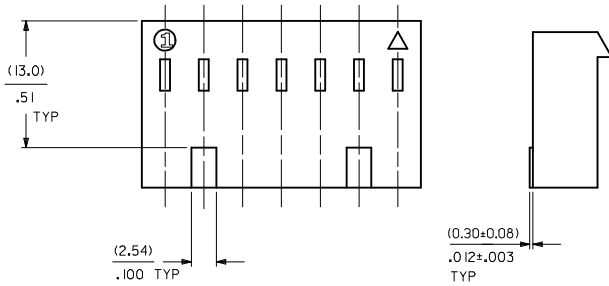
RAMP WITH POLARIZING PEGS (RIBS)



WHEN MATING WITH BREAKAWAY HEADERS THE FRICTION LOCK WALL MUST BE REMOVED

| | | | | | | |
|---|--|--|--|--|---|---|
| ADD 41695-0002 DEC NO. UICP2009-2480 DRAWN BY: WKK/PPER 2009/05/27 CHECKED BY: BELL 2009/05/26 APPR:FSM/TH 2009/05/26 REV 5 | QUALITY SYMBOLS ▽=0 ▽=0 | GENERAL TOLERANCES (UNLESS SPECIFIED) mm INCH 4 PLACES # --- ± --- 3 PLACES # --- ± --- 2 PLACES # --- ± --- 1 PLACE # --- ± --- ANGULAR ±1/2° | DIMENSION STYLE MM/IN DRAWN BY: SAMIEC 09/22/86 CHECKED BY: PATEL 09/22/86 APPROVED BY: ENZ 09/22/86 | SCALE: --- DESIGN UNITS: INCH THIRD ANGLE PROJECTION | TITLE: (3.96)/.156 CENTERLINE CONNECTOR HOUSING FOR KK CRIMP TERMINAL | |
| | DRAFT WHERE APPLICABLE MUST REMAIN WITHIN DIMENSIONS | MATERIAL NO.: SEE CHART SIZE: D | MOLEX INCORPORATED MOLEX INCORPORATED | DOCUMENT NO.: SD-41695 | SHEET NO.: 2 OF 4 | THIS DRAWING CONTAINS INFORMATION THAT IS PROPRIETARY TO MOLEX INCORPORATED AND SHOULD NOT BE USED WITHOUT WRITTEN PERMISSION |

OPTION CODE E
RAMP WITH RIBS FOR OVER MOLDING



| 41695-N-DN-* | | |
|--------------|---------------|-------|
| PART NO. | ENG. NO. | VOIDS |
| | NOT AVAILABLE | |
| 09-50-8023 | 41695-N-D2 | |
| 09-50-8033 | 41695-N-D3 | |
| 09-50-8043 | 41695-N-D4 | |
| 09-50-8053 | 41695-N-D5 | |
| 09-50-8063 | 41695-N-D6 | |
| 09-50-8073 | 41695-N-D7 | |
| 09-50-8083 | 41695-N-D8 | |
| 09-50-8093 | 41695-N-D9 | |
| 09-50-8103 | 41695-N-D10 | |
| 09-50-8113 | 41695-N-D11 | |
| 09-50-8123 | 41695-N-D12 | |
| 09-50-8133 | 41695-N-D13 | |
| 09-50-8143 | 41695-N-D14 | |
| 09-50-8153 | 41695-N-D15 | |
| 09-50-8163 | 41695-N-D16 | |
| 09-50-8173 | 41695-N-D17 | |
| 09-50-8183 | 41695-N-D18 | |
| 09-50-8193 | 41695-N-D19 | |
| 09-50-8203 | 41695-N-D20 | |
| 09-50-9053 | 41695-N-D5-12 | 12 |
| 09-50-9094 | 41695-N-D9-3 | 3 |
| 09-50-9033 | 41695-N-D3-2 | 2 |
| 09-50-9043 | 41695-N-D4-2 | 2 |
| 09-50-9063 | 41695-N-D6-2 | 2 |
| 09-50-9073 | 41695-N-D7-2 | 2 |
| 09-50-9044 | 41695-N-D4-3 | 3 |

| 41695-N-EN-* | | |
|--------------|---------------|-------|
| PART NO. | ENG. NO. | VOIDS |
| | NOT AVAILABLE | |
| 09-50-8024 | 41695-N-E2 | |
| | 41695-N-E3 | |
| | 41695-N-E4 | |
| | 41695-N-E5 | |
| 09-50-8064 | 41695-N-E6 | |
| | 41695-N-E7 | |
| | 41695-N-E8 | |
| | 41695-N-E9 | |
| | 41695-N-E10 | |
| | 41695-N-E11 | |
| | 41695-N-E12 | |
| | 41695-N-E13 | |
| | 41695-N-E14 | |
| | 41695-N-E15 | |
| | 41695-N-E16 | |
| | 41695-N-E17 | |
| | 41695-N-E18 | |
| | 41695-N-E19 | |
| | 41695-N-E20 | |
| 09-50-9032 | 41695-N-E3-2 | 2 |
| 09-50-9042 | 41695-N-E4-2 | 2 |
| 09-50-9062 | 41695-N-E6-2 | 2 |
| 09-50-9072 | 41695-N-E7-2 | 2 |

| 41695-N-FN-*** | | | |
|----------------|--------------|-----|-------|
| PART NO. | ENG. NO. | PEG | VOIDS |
| OBSOLETE | 41695-N-F7-D | 4 | |
| OBSOLETE | 41695-N-F7-E | 5 | |

| 41695-G-DN-* | | |
|--------------|-------------|-------|
| PART NO. | ENG. NO. | VOIDS |
| 41695-2001 | 41695-G-D02 | |
| 41695-2004 | 41695-G-D03 | |
| 41695-2021 | 41695-G-D04 | |
| 41695-2022 | 41695-G-D05 | |
| 41695-2023 | 41695-G-D06 | |
| 41695-2024 | 41695-G-D07 | |
| 41695-2025 | 41695-G-D08 | |
| 41695-2026 | 41695-G-D09 | |
| 41695-2027 | 41695-G-D10 | |
| 41695-2028 | 41695-G-D11 | |
| 41695-2029 | 41695-G-D12 | |

| 41695-G-EN-* | | |
|--------------|-------------|-------|
| PART NO. | ENG. NO. | VOIDS |
| 41695-2043 | 41695-G-E02 | |
| 41695-2044 | 41695-G-E03 | |
| 41695-2045 | 41695-G-E04 | |
| 41695-2046 | 41695-G-E05 | |
| 41695-2047 | 41695-G-E06 | |
| 41695-2048 | 41695-G-E07 | |
| 41695-2049 | 41695-G-E08 | |
| 41695-2050 | 41695-G-E09 | |
| 41695-2051 | 41695-G-E10 | |
| 41695-2052 | 41695-G-E11 | |
| 41695-2053 | 41695-G-E12 | |

| SEE SHEET 1 IEC NO. UCF2010-0004 DRAWN BY: LIPPER CHYKOSSEK APPR:FSM/TH 2009/08/07 2009/08/10 2009/08/18 60 | QUALITY SYMBOLS ▽=0 ▽=0 | GENERAL TOLERANCES (UNLESS SPECIFIED) <table border="1"> <tr> <th></th> <th>mm</th> <th>INCH</th> </tr> <tr> <td>4 PLACES</td> <td>± .005</td> <td>± .0002</td> </tr> <tr> <td>3 PLACES</td> <td>± .005</td> <td>± .0002</td> </tr> <tr> <td>2 PLACES</td> <td>± .005</td> <td>± .0002</td> </tr> <tr> <td>1 PLACE</td> <td>± .005</td> <td>± .0002</td> </tr> </table> ANGULAR ±1/2° DRAFT WHERE APPLICABLE MUST REMAIN WITHIN DIMENSIONS | | mm | INCH | 4 PLACES | ± .005 | ± .0002 | 3 PLACES | ± .005 | ± .0002 | 2 PLACES | ± .005 | ± .0002 | 1 PLACE | ± .005 | ± .0002 | DIMENSION STYLE MM/IN DRAWN BY: SAMIEC CHECKED BY: PATEL APPROVED BY: LENZ DATE: 09/01/87 DATE: 09/01/87 DATE: 09/01/87 | SCALE: --- DESIGN UNITS: INCH THIRD ANGLE PROJECTION | TITLE: (3.96)/.156 CENTERLINE CONNECTOR HOUSING FOR KK CRIMP TERMINAL MOLEX INCORPORATED MATERIAL NO. SD-41695 DOCUMENT NO. SD-41695 SHEET NO. 3 OF 4 |
|--|-------------------------------|--|---------|----|------|----------|--------|---------|----------|--------|---------|----------|--------|---------|---------|--------|---------|--|--|--|
| | | mm | INCH | | | | | | | | | | | | | | | | | |
| | 4 PLACES | ± .005 | ± .0002 | | | | | | | | | | | | | | | | | |
| | 3 PLACES | ± .005 | ± .0002 | | | | | | | | | | | | | | | | | |
| 2 PLACES | ± .005 | ± .0002 | | | | | | | | | | | | | | | | | | |
| 1 PLACE | ± .005 | ± .0002 | | | | | | | | | | | | | | | | | | |
| THIS DRAWING CONTAINS INFORMATION THAT IS PROPRIETARY TO MOLEX INCORPORATED AND SHOULD NOT BE USED WITHOUT WRITTEN PERMISSION | | | | | | | | | | | | | | | | | | | | |
| SIZE: D | | | | | | | | | | | | | | | | | | | | |
| DRAWING NO. SD-41695 | | | | | | | | | | | | | | | | | | | | |