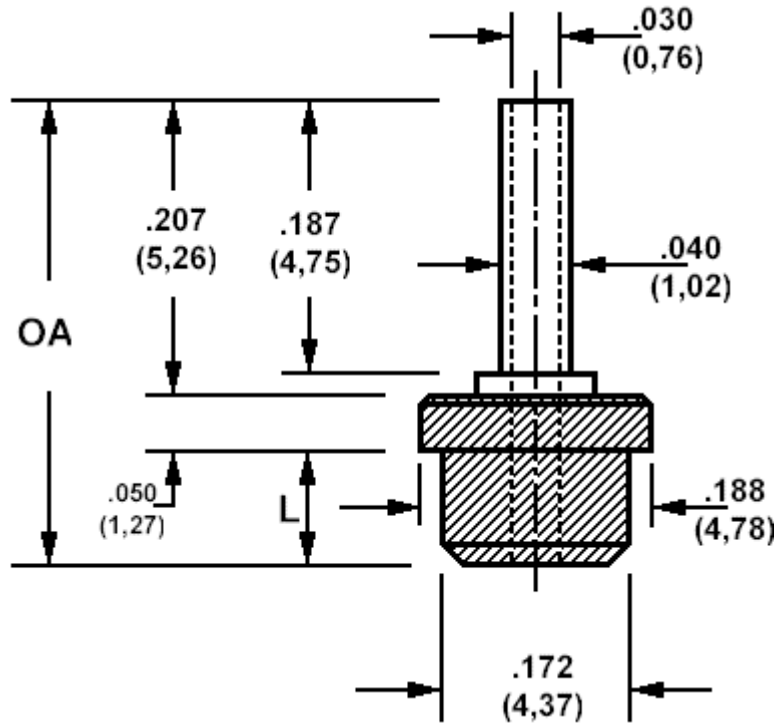


571-4240 Insulated solder terminal, Pin type, Thru hole

Recommended mounting hole .158 (4,01)



How to order code

571-4240-XX-YY-19

Basic Part No (XX = Panel thickness, YY = plating finish. See tables for options)

Basic Part No.		OA (ref)	L	Panel Thickness (XX)
571-4240	-01	.367 (9,32)	.110 (2,79)	.031 (0,79) to .071 (1,80)

Component	Material	Finish _t (YY)	
		-01	-05
Terminal	Brass	Silver	Electro Solder
Insulator	Teflon - white		

Additional Specifications	
Flashover VRMS at Sea Level	3500
Capacitance (pF)	0.5

Teflon is a registered trademark of Dupont