

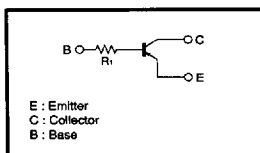
Digital transistor (built-in resistors)

DTB114TK

●Features

- 1) Built-in bias resistors enable the configuration of an inverter circuit without connecting external input resistors.
- 2) The bias resistors consist of thin-film resistors with complete isolation to allow positive biasing of the input, and parasitic effects are almost completely eliminated.
- 3) Only the on/off conditions need to be set for operation, making device design easy.
- 4) Higher mounting densities can be achieved.

●Circuit schematic



●Absolute maximum ratings (Ta=25°C)

Parameter	Symbol	Limits	Unit
Collector-base voltage	V _{ceo}	—50	V
Collector-emitter voltage	V _{ceo}	—40	V
Emitter-base voltage	V _{ebo}	—5	V
Collector current	I _c	—500	mA
Collector power dissipation	P _c	200	mW
Junction temperature	T _j	150	°C
Storage temperature	T _{stg}	—55~150	°C

●Package, marking, and packaging specifications

Type	DTB114TK
Package	SMT3
Marking	E94
Code	T146
Basic ordering unit (pieces)	3000

●Electrical characteristics (Ta=25°C)

Parameter	Symbol	Min.	Typ.	Max.	Unit	Conditions
Collector-base breakdown voltage	BV _{ceo}	—50	—	—	V	I _c =—50 μA
Collector-emitter breakdown voltage	BV _{ceo}	—40	—	—	V	I _c =—1 mA
Emitter-base breakdown voltage	BV _{ebo}	—5	—	—	V	I _e =—50 μA
Collector cutoff current	I _{ceo}	—	—	—0.5	μA	V _{ce} =—50V
Emitter cutoff current	I _{ebo}	—	—	—0.5	μA	V _{eb} =—4V
Collector-emitter saturation voltage	V _{CE(sat)}	—	—	—0.3	V	I _c /I _e =—50mA/—2.5mA
DC current gain	h _{FE}	100	250	600	—	I _c =—50mA, V _{ce} =—5V
Input resistance	R _i	7	10	13	kΩ	—
Transition frequency	f _r	—	200	—	MHz	V _{ce} =—10V, I _e =5mA, f=100MHz

* Transition frequency of mounted transistor.

(96-294-B114T)

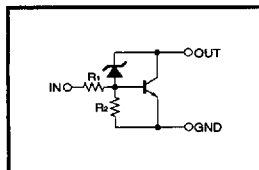
Digital transistor (built-in resistors), driver (60V, 1A)

DTDG23YP

●Features

- 1) High DC current gain. (Min. 300 at V_o/I_o=2V/0.5A)
- 2) Low output voltage. (Typ. 0.4V at I_o/I_i=500/50mA)
- 3) Built-in zener diode gives strong protection against reverse

●Circuit schematic



●Absolute maximum ratings (Ta=25°C)

Parameter	Symbol	Limits	Unit
Supply voltage	V _{cc}	60±10	V
Input voltage	V _{in}	40 —6	V
Collector current	I _c I _{c(Max.)}	1 2	A A (Pulse) *1
Power dissipation	P _d	1.5	W *2
Junction temperature	T _j	150	°C
Storage temperature	T _{stg}	—55~150	°C

*1 P_w≤10ms, Duty cycle≤2%

*2 On 40×40×0.7mm ceramic board.

●Package, marking, and packaging specifications

Type	DTDG23YP
Package	MPT3
Marking	E02
Code	T100
Basic ordering unit (pieces)	1000

●Electrical characteristics (Ta=25°C)

Parameter	Symbol	Min.	Typ.	Max.	Unit	Conditions
Input voltage	V _{I(on)}	—	—	0.3	V	V _{cc} =5V, I _o =100 μA
	V _{I(off)}	2	—	—	—	V _o =0.4V, I _o =100mA
Output voltage	V _{O(on)}	—	—	0.4	V	I _o /I _i =500mA/5mA
Input current	I _i	—	—	3.6	mA	V _i =5V
Output current	I _{O(on)}	—	—	0.5	μA	V _{cc} =40V, V _i =0V
DC current gain	G _i	300	—	—	—	V _o =2V, I _o =500mA
Transition frequency	f _r	—	80	—	MHz	V _{ce} =5V, I _e =—0.1A, f=30MHz
Input resistance	R _i	1.54	2.2	2.86	kΩ	—
Emitter-base resistance	R _z	7	10	13	kΩ	—

* Transition frequency of mounted transistor.

7828999 0017136 7T6

ROHM

(96-378-DS23YP)

Packages

ROHM has been manufacturing transistors since 1975. In the development of products, we constantly strive to anticipate the needs of our customers. Regarding packages, the demands of the market for compactness, low power consumption, low power dissipation and automatic mounting support are becoming ever greater, and we are strengthening our product development system to meet these needs.

●Types and features of surface-mount packages

Type	External dimensions (Units : mm)	Features
EMT3 SC-75A type		<p>A more compact version of the UMT3 (SC-70), the EMT3 is the world's smallest transistor with a mold size of 1.6×0.8 mm. The mounting area is approximately 60% of the UMT3 and 30% of the SMT3, making it ideal for ultra-high density mounting. Mounting is possible with the same type of automatic mounting machine as the UMT3.</p>
UMT3 SC-70 type		<p>The UMT3 is a smaller version of the SMT3 (SC-59). The mounting area is approximately 60% of the SMT3, making it optimum for high density mounting. The taping size is the same as the SMT3, allowing use of conventional automatic mounting machines. Electrical characteristics and reliability are the same as the SMT3.</p>
SMT3 SC-59 type		<p>The SMT3 is a compact package suitable for small electronic devices and hybrid IC applications. With proven performance, this is one of the most basic small packages. With the exception of P_c (collector power dissipation), electrical characteristics are similar to leaded packages. Reliability is on the same level as the TO-92.</p>
MPT3 SC-62 type		<p>By itself the MPT3 has a P_c of 0.5 W ($T_a = 25^\circ\text{C}$), but when used on a $40 \times 40 \times 0.7$ mm ceramic board, $P_c = 2$ W ($T_c = 25^\circ\text{C}$), allowing high power to be obtained with a small package. The flat package makes it suitable for applications requiring compactness such as hybrid ICs. Available on tape for automatic mounting.</p>

EXPLANATION

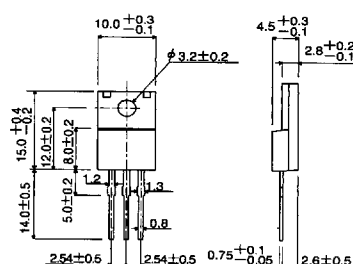
Type	External dimensions (Units : mm)	Features
UMT5 SC-88A type	<p>2.0±0.2 1.3±0.1 0.65 0.65 1.25±0.1 2.1±0.1 0.2+0.1 -0.05 0.15±0.05 0.9±0.1 0.7 0~0.1 0.1Min.</p> <p>All terminals have same dimensions</p>	<p>The UMT5 consists of two connected transistors or digital transistors in a UMT3 (SC-70) package. The mounting area can be reduced by 50% compared to the UMT3 and the internal circuitry is completed, making this package ideal for high density mounting at half the assembly cost.</p>
UMT6 SC-88 type	<p>2.0±0.2 1.3±0.1 0.65 0.65 1.25±0.1 2.1±0.1 0.2+0.1 -0.05 0.15±0.05 0.9±0.1 0.7 0~0.1 0.1Min.</p> <p>All terminals have same dimensions</p>	<p>The UMT6 consists of two independent transistors or two independent digital transistors in a UMT (SC-70) package. The mounting area and mounting cost can be reduced by 50% compared to the UMT3, and the two transistors are independent to allow free configuration of a high density circuit.</p>

●Types and features of leaded packages

Type	External dimensions (Units : mm)	Features
SPT (SC-72 type)		<p>The SPT is a smaller version of the conventional TO-92 type. The body size (3×4×2 mm³) has been reduced to 1/4 that of the TO-92 (5×5×4 mm³). The SPT is available on tape for automatic insertion, and less space is occupied on the printed circuit board than the TO-92. Reliability is the same as the TO-92.</p>
FTR		<p>SIL type with a height of 3.4 mm and a lead pitch of 2.54 mm.</p>
FTL		<p>The FTL is a radial taping version of the highly popular FTR. This enables automatic high-density mounting with a radial insertion machine.</p>
ATR (SC-71 type)		<p>SC-71type with a height of 4.4 mm and a P_c=1W type.</p>

EXPLANATION

Type	External dimensions (Units : mm)	Features
ATV		The ATV is a radial tapping version of the highly popular ATR. This enables automatic high-density mounting with a radial insertion machine.
TO-92 (SC-43 type)		The SC-43 is for general purpose small signals.
TO-126FP		The TO-126FP is an isolation type package based on a TO-126 full mold. In addition to the features of the TO-126, molded heat sink fins allow easy isolation of the heat sink.
TO-220FP (SC-67 type)		The TO-220FP is an isolation type package based on a TO-220 full mold. In addition to the features of the TO-126 and TO-220, molded heat sink fins allow easy isolation of the heat sink.

Type	External dimensions (Units : mm)	Features
TO-220FN	 <p>Technical drawing of the TO-220FN transistor package showing top and side views with dimensions in mm.</p> <p>Top View Dimensions:</p> <ul style="list-style-type: none"> Overall width: $10.0^{+0.3}_{-0.1}$ Overall height: $15.0^{+0.4}_{-0.2}$ Distance from top edge to mounting hole center: $12.0^{+0.2}_{-0.2}$ Distance from bottom edge to mounting hole center: $8.0^{+0.2}_{-0.2}$ Distance from left edge to mounting hole center: $5.0^{+0.2}_{-0.2}$ Mounting hole diameter: $\phi 3.2^{+0.2}_{-0.2}$ Distance between mounting holes: $2.54^{+0.5}_{-0.5}$ Distance from mounting hole to lead start: $0.75^{+0.1}_{-0.05}$ Lead thickness: 0.8 Lead width at base: $2.6^{+0.5}_{-0.5}$ <p>Side View Dimensions:</p> <ul style="list-style-type: none"> Overall height: $4.5^{+0.3}_{-0.1}$ Distance from base to mounting hole center: $2.8^{+0.2}_{-0.1}$ 	<p>The TO-220FN features the same performance as the TO-220FP with approximately 2 mm less height, allowing the design of slimmer devices. Furthermore, the elimination of support pins in the fin (collector electrode) solves short-circuiting problems with neighboring components and the chassis.</p> <p>To make the height to the installation hole the same as the TO-220FP, it can be replaced as is from the TO-220FP.</p>

EXPLANATION