

PLEASE CHECK WWW.MOLEX.COM FOR LATEST PART INFORMATION

Part Number: [0510150600](#)
Status: **Active**
Description: 2.00mm (.079") Pitch Board-In Crimp Housing, Low Profile, 6 Circuits

Documents:

3D Model	Product Specification PS-51015-002 (PDF)
Drawing (PDF)	RoHS Certificate of Compliance (PDF)
Product Specification PS-51015-001 (PDF)	

Agency Certification

UL	E29179
----	--------

General

Product Family	Crimp Housings
Series	51015
Product Name	Board-In

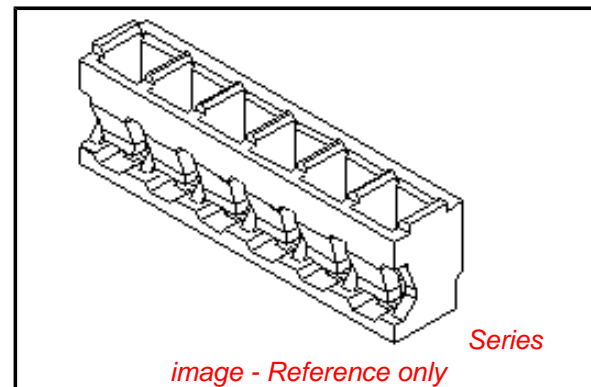
Physical

Circuits (maximum)	6
Color - Resin	Natural
Flammability	94V-0
Gender	Male
Glow-Wire Compliant	No
Material - Resin	Nylon
Number of Rows	1
Packaging Type	Bag
Panel Mount	No
Pitch - Mating Interface (in)	0.079 In
Pitch - Mating Interface (mm)	2.00 mm
Stackable	No
Temperature Range - Operating	-40°C to +105°C

Material Info

Reference - Drawing Numbers

Packaging Specification	SPK-51015-001
Product Specification	PS-51015-001, PS-51015-002, RPS-51015-001, RPS-51015-003, RPS-51015-004, RPS-51015-006
Sales Drawing	SD-51015-**00



EU RoHS

**ELV and RoHS
Compliant**
**REACH SVHC
Contains SVHC: No**
**Halogen-Free
Status**

China RoHS



**Need more information on product
environmental compliance?**

Email productcompliance@molex.com
 For a multiple part number RoHS Certificate of
 Compliance, [click here](#)

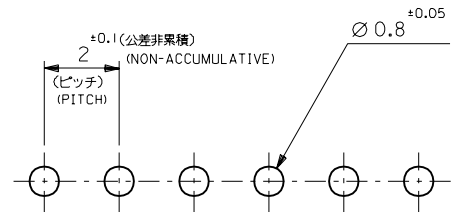
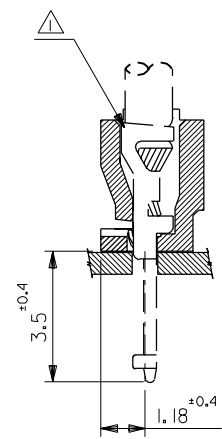
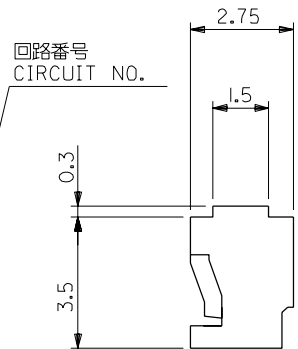
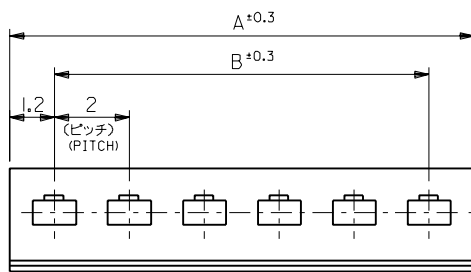
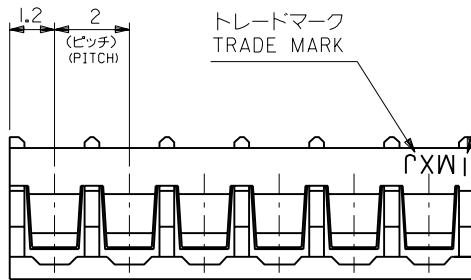
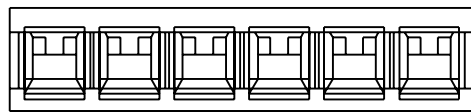
Please visit the [Contact Us](#) section for any
 non-product compliance questions.

Search Parts in this Series

[51015Series](#)

Use With

[50034](#)



基板取付穴推奨寸法

(基板厚: t=1~1.6mm)
RECOMMENDED PC BOARD
HOLE DIMENSION
(THICKNESS: t=1~1.6mm)

注記
NOTE

△ 適合ターミナル: 50034-8*00
APPLICABLE TERMINAL: 50034-8*00

28	30.4	51015-1500	15
26	28.4	↑ -1400	14
24	26.4	-1300	13
22	24.4	-1200	12
20	22.4	-1100	11
18	20.4	-1000	10
16	18.4	-0900	9
14	16.4	-0800	8
12	14.4	-0700	7
10	12.4	-0600	6
8	10.4	-0500	5
6	8.4	-0400	4
4	6.4	↓ -0300	3
2	4.4	51015-0200	2
B	A	ENG.NO.	種数 NO. OF CKT

材料 MATERIAL ナイロン66, UL94V-0 NYLON66, UL94V-0		再作図 REDRAWN LUC703101		DRAWN BY '96/05/28 H.I.IJIMA		CHK'D BY '96/05/28 M.FUKUSHIMA	
仕上げ FINISH ---		変更内容 REVISION RECORD		APP'D BY '96/05/28 M.ENOMOTO		尺度 SCALE 8 : 1	
適用電線範囲 WIRE RANGE ---		DR. / CHK. / DATE		M.F.			
被覆外径 INS. RANGE ---		記号 LTR		日付 DATE			
角度 ANGLE ±3°		B					
30以上 OVER ±0.3							
10以上 30未満 UNDER ±0.25							
10未満 UNDER ±0.2							
一般公差 GENERAL TOLERANCES							

molex MOLEX-JAPAN CO.,LTD.
日本モレックス株式会社

REVISE ONLY ON CAD SYSTEM

TITLE 名称
2.0 BOARD
IN CONN. HSG.

DWG. NO. SD-51015-**-00

REV B