

PLEASE CHECK WWW.MOLEX.COM FOR LATEST PART INFORMATION

Part Number: **0482036069**

Status: **Active**

Description: High Density, DDC Compatible D-Subminiature Shielded I/O PCB Female Receptacle, Right Angle, Through Hole, Full 15 Circuits, 2 #4-40 Hex Inner Thread Screws Assembled, Black Housing, Overall Gold (Au) Flash, Lead Free

Documents:

[3D Model](#)

[Product Specification PS-48203-001 \(PDF\)](#)

[Drawing \(PDF\)](#)

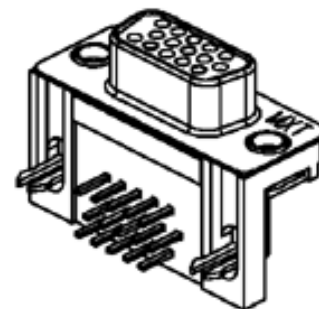
[RoHS Certificate of Compliance \(PDF\)](#)

General

Product Family	I/O Connectors
Series	<u>48203</u>
Application	Wire-to-Board
Component Type	Receptacle
Product Name	D-Sub, DB15
Type	N/A

Physical

Boot Color	N/A
Circuits (Loaded)	15
Circuits (maximum)	15
Color - Resin	Black
Durability (mating cycles max)	600
Gender	Receptacle
Lock to Mating Part	Yes
Material - Metal	Phosphor Bronze
Material - Plating Mating	Gold
Material - Plating Termination	Tin
Material - Resin	Polyester
Number of Rows	3
Orientation	Right Angle
PC Tail Length (in)	0.138 In
PC Tail Length (mm)	3.50 mm
PCB Locator	Yes
PCB Retention	Yes
PCB Thickness Recommended (in)	0.063 In
PCB Thickness Recommended (mm)	1.60 mm
Packaging Type	Tray
Panel Mount	Yes
Pitch - Mating Interface (in)	0.090 In
Pitch - Mating Interface (mm)	2.29 mm
Pitch - Term. Interface (in)	0.090 In
Pitch - Term. Interface (mm)	2.29 mm
Plating min: Mating (µin)	2
Plating min: Mating (µm)	0.05
Plating min: Termination (µin)	2
Plating min: Termination (µm)	0.05
Polarized to Mating Part	Yes
Polarized to PCB	Yes
Ports	1
Surface Mount Compatible (SMC)	No
Temperature Range - Operating	-40°C to +85°C
Termination Interface: Style	Through Hole
Waterproof / Dustproof	No
Wire Size AWG	N/A



Series

image - Reference only

EU RoHS

**ELV and RoHS
Compliant**

REACH SVHC

Not Reviewed

Halogen-Free

Status

Not Reviewed

**Need more information on product
environmental compliance?**

Email productcompliance@molex.com
For a multiple part number RoHS Certificate of
Compliance, [click here](#)

Please visit the [Contact Us](#) section for any
non-product compliance questions.

China RoHS



Search Parts in this Series

48203Series

Mates With

48202

Electrical

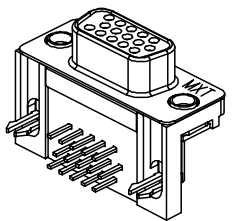
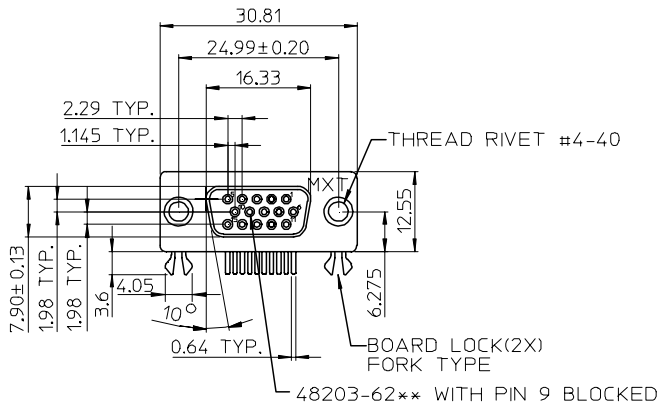
Current - Maximum per Contact	1A
Grounding to Panel	Press-Fit
Shield Type	Full Shield
Shielded	Yes
Voltage - Maximum	300V DC

Material Info**Reference - Drawing Numbers**

Product Specification	PS-48203-001
Sales Drawing	SD-48203-001

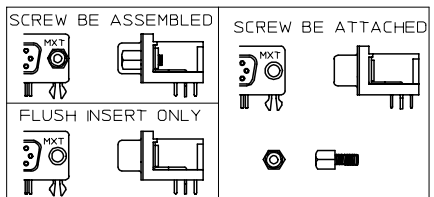
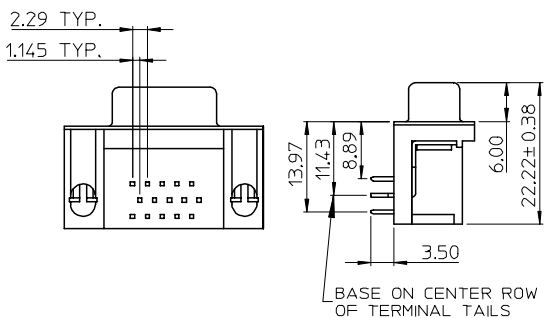
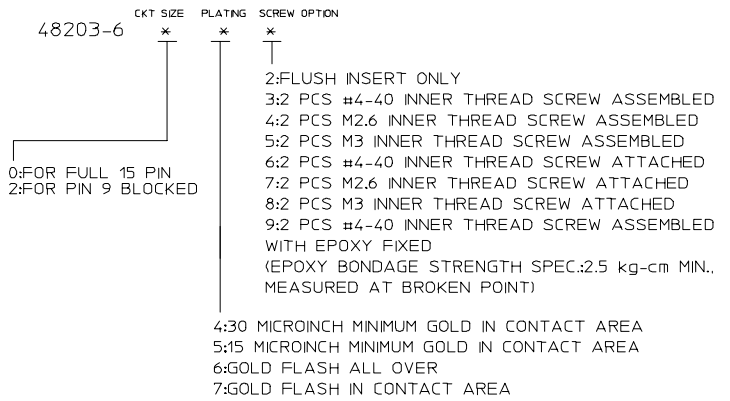
This document was generated on 04/02/2010

PLEASE CHECK WWW.MOLEX.COM FOR LATEST PART INFORMATION

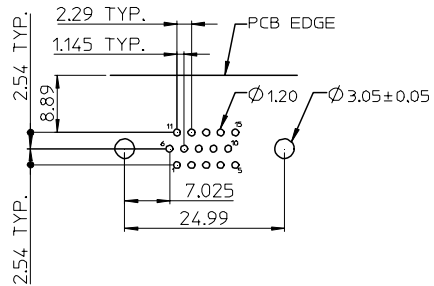


NOTE:
 1.MATERIAL:
 HOUSING: POLYESTER GLASS FILLED,UL94-V0,COLOR:BLACK
 TERMINAL: PHOSPHOR BRONZE
 METAL SHELL: SPCC
 BOARD LOCK: BRASS
 SCREW: BRASS
 2.TERMINAL:
 CONTACT AREA: SEE PART NUMBER LEGEND
 SOLDER TAIL:TIN(Sn),THICKNESS=100 MICROINCH MIN/2.54 MICROMETER MIN.
 UNDER PLATE:NICKEL(Ni),THICKNESS=50 MICROINCH MIN/1.27 MICROMETER MIN.
 METAL SHELL:TIN (Sn),THICKNESS=100 MICROINCH MIN/2.54 MICROMETER MIN.
 UNDER PLATE:COPPER(Cu),THICKNESS=50 MICROINCH MIN/1.27 MICROMETER MIN.
 BOARD LOCK:TIN (Sn),THICKNESS=50 MICROINCH MIN/1.27 MICROMETER MIN.
 SCREW: NICKEL(Ni),THICKNESS=50 MICROINCH MIN/1.27 MICROMETER MIN.
 3.RECOMMANDED PCB THICKNESS: 1.60+/-0.05mm
 4.PRODUCT SPECIFICATION: REFER TO PS-48203-001
 5.TEST SUMMARY: REFER TO TS-48203-001
 6.PACKAGING SPECIFICATION: REFER TO PK-48203-001
 7.LEAD FREE AND ROHS COMPLIANCE PRODUCT

PART NUMBER LEGEND



RECOMMENDED PCB LAYOUT



L/F FOR 89263-6*** EC NO: SH20050920202 DRWN: JCHEN12 2005/07/22 CHKD: 2005/07/22 APPR: JOHUANG 2005/07/22	DESCRIPTION	QUALITY SYMBOLS	GENERAL TOLERANCES (UNLESS SPECIFIED)		DIMENSION STYLE MM ONLY		SCALE 1:1	DESIGN UNITS METRIC	THIRD ANGLE PROJECTION																															
			<table border="1"> <tr> <td></td> <td>mm</td> <td>INCH</td> </tr> <tr> <td>4 PLACES</td> <td>± ---</td> <td>± ---</td> </tr> <tr> <td>3 PLACES</td> <td>± ---</td> <td>± ---</td> </tr> <tr> <td>2 PLACES</td> <td>± 0.25</td> <td>± ---</td> </tr> <tr> <td>1 PLACE</td> <td>± 0.25</td> <td>± ---</td> </tr> </table>		mm	INCH	4 PLACES	± ---	± ---	3 PLACES	± ---	± ---	2 PLACES	± 0.25	± ---	1 PLACE	± 0.25	± ---	<table border="1"> <tr> <td>DRAWN BY</td> <td>DATE</td> <td>TITLE</td> </tr> <tr> <td>LINDA</td> <td>2005/04/25</td> <td>HI-DENSITY 15 CIRCUIT D-SUB FORK BOARD LOCK (LEAD FREE VERSION)</td> </tr> <tr> <td>CHECKED BY</td> <td>DATE</td> <td></td> </tr> <tr> <td>ALL IN</td> <td>2005/04/25</td> <td></td> </tr> <tr> <td>APPROVED BY</td> <td>DATE</td> <td></td> </tr> <tr> <td>WWSCHANG</td> <td>2005/04/25</td> <td></td> </tr> </table>	DRAWN BY	DATE	TITLE	LINDA	2005/04/25	HI-DENSITY 15 CIRCUIT D-SUB FORK BOARD LOCK (LEAD FREE VERSION)	CHECKED BY	DATE		ALL IN	2005/04/25		APPROVED BY	DATE		WWSCHANG	2005/04/25		MOLEX INCORPORATED		MATERIAL NO. 48203-6***
	mm	INCH																																						
4 PLACES	± ---	± ---																																						
3 PLACES	± ---	± ---																																						
2 PLACES	± 0.25	± ---																																						
1 PLACE	± 0.25	± ---																																						
DRAWN BY	DATE	TITLE																																						
LINDA	2005/04/25	HI-DENSITY 15 CIRCUIT D-SUB FORK BOARD LOCK (LEAD FREE VERSION)																																						
CHECKED BY	DATE																																							
ALL IN	2005/04/25																																							
APPROVED BY	DATE																																							
WWSCHANG	2005/04/25																																							
DRAFT WHERE APPLICABLE MUST REMAIN WITHIN DIMENSIONS			THIS DRAWING CONTAINS INFORMATION THAT IS PROPRIETARY TO MOLEX INCORPORATED AND SHOULD NOT BE USED WITHOUT WRITTEN PERMISSION																																					