

**PLEASE CHECK WWW.MOLEX.COM FOR LATEST PART INFORMATION**

**Part Number:** [1050480001](#)  
**Status:** **Active**  
**Description:** 2.54mm (.100") SIM Card Connector, 6 Circuits, SMT, with Guide Rail, Housing Height 1.45mm (.057"), Lead Free

**Documents:**

[Drawing \(PDF\)](#) [RoHS Certificate of Compliance \(PDF\)](#)  
[Product Specification PS-105048-001 \(PDF\)](#)

**General**

Product Family	Memory Card Sockets
Series	<a href="#">105048</a>
Button Type	N/A
Component Type	Card Holder (Host)
Product Name	SIM
Type	N/A

**Physical**

Card Detection Switch	No
Circuits (Loaded)	6
Circuits (maximum)	6
Color - Resin	Black
Durability (mating cycles max)	5,000
Ejector Button Side	No Ejector Button Present
Entry Angle	Horizontal
Keying to Mating Part	Yes
Material - Metal	Phosphor Bronze
Material - Plating Mating	Gold
Material - Plating Termination	Gold
Material - Resin	High Temperature Thermoplastic
PCB Locator	No
PCB Mounting Side	Normal
PCB Retention	Yes
Packaging Type	Embossed Tape on Reel
Pitch - Mating Interface (in)	0.100 In
Pitch - Mating Interface (mm)	2.54 mm
Pitch - Term. Interface (in)	0.100 In
Pitch - Term. Interface (mm)	2.54 mm
Plating min: Mating (µin)	15
Plating min: Mating (µm)	0.375
Plating min: Termination (µin)	2
Plating min: Termination (µm)	0.05
Ports	1
Temperature Range - Operating	-40°C to +85°C
Termination Interface: Style	Surface Mount

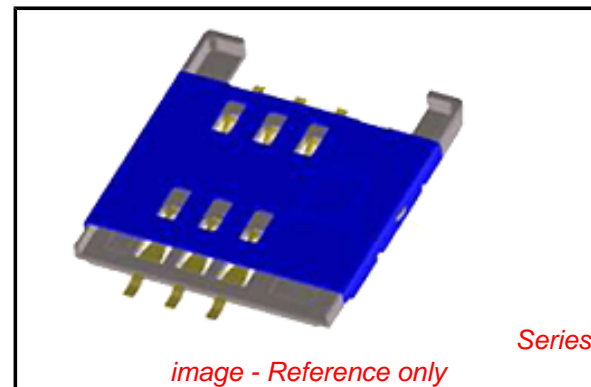
**Electrical**

Current - Maximum per Contact	0.5A
Shielded	Yes
Voltage - Maximum	5V DC

**Material Info**

**Reference - Drawing Numbers**

Product Specification	PS-105048-001
Sales Drawing	SD-105048-001



**EU RoHS**

**ELV and RoHS Compliant**  
**REACH SVHC**  
**Contains SVHC: No**  
**Halogen-Free**  
**Status**  
**Not Reviewed**

**China RoHS**



**Need more information on product environmental compliance?**

Email [productcompliance@molex.com](mailto:productcompliance@molex.com)  
 For a multiple part number RoHS Certificate of Compliance, [click here](#)

Please visit the [Contact Us](#) section for any non-product compliance questions.

**Search Parts in this Series**

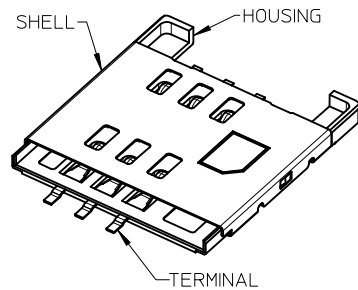
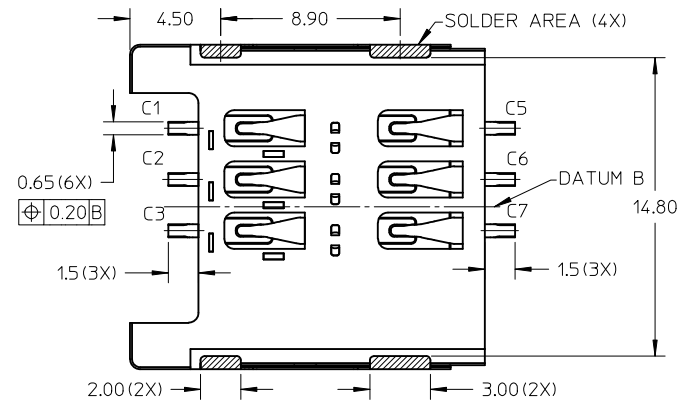
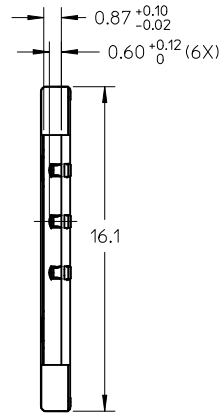
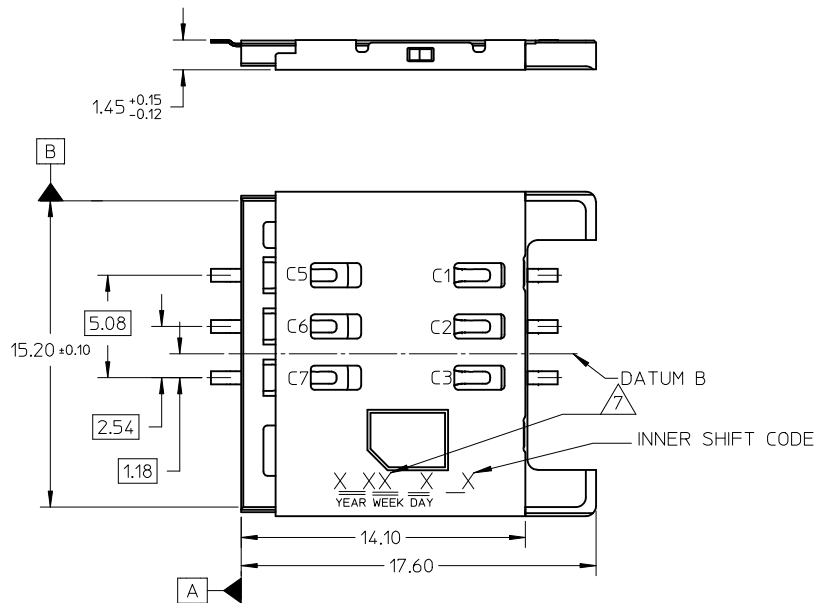
[105048Series](#)

**Mates With**

Standard SIM Card

This document was generated on 05/18/2010

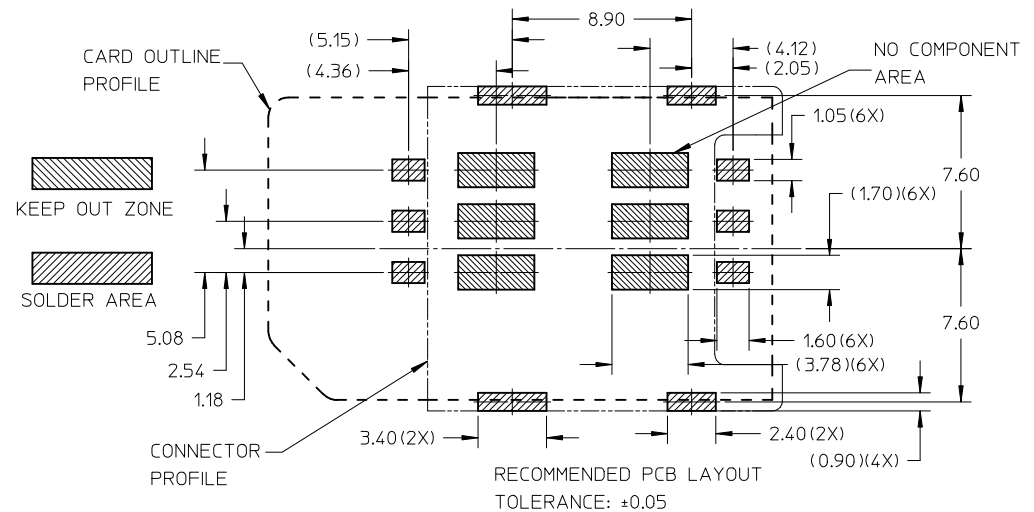
**PLEASE CHECK [WWW.MOLEX.COM](http://WWW.MOLEX.COM) FOR LATEST PART INFORMATION**



P/N	GOLD PLATING ON CONTACT AREA
1050480001	0.375um (15u") MIN
1050480011	0.50um (20u") MIN

NOTE:

- 1 MATERIAL
- HOUSING : LIQUID CRYSTALLINE POLYMER (LCP), GLASS FILLED  
UL94V-0, COLOR: BLACK
- TERMINAL : PHOSPHOR BRONZE
- SHELL : STAINLESS STEEL
- 2 FINISHES
- TERMINAL : 0.375um (15u") MIN GOLD ON CONTACT AREA  
0.0762 - 0.127um (3 - 5u") GOLD FLASH ON SOLDER TAILS  
1.27um (50u") MIN NICKEL UNDERPLATE OVER ALL
- SHELL : 0.0762um (3u") MIN GOLD FLASH OVER 1.27um (50u") MIN  
NICKEL UNDERPLATE ON SOLDER AREAS
- 3 PRODUCT SPECIFICATION: PS-105048-001
- 4 PACKAGING SPECIFICATION: PK-105048-001
- 5 ALL SOLDER TAILS COPLANARITY: 0.08mm MAX
- 6 COMPLIANT TO ROHS DIRECTIVE 2002/95/EC & ELV DIRECTIVE 2000/53/EC
- 7 DATE CODE \*\*\* (4 DIGITS)



CHANGE DATE CODE	DESCRIPTION	QUALITY SYMBOLS	GENERAL TOLERANCES (UNLESS SPECIFIED)		DIMENSION STYLE		SCALE	DESIGN UNITS	THIRD ANGLE PROJECTION	
			mm	INCH	MM ONLY	NTS	METRIC	DATE	DATE	TITLE
EC NO: S2010-0733	DRW:KHLIM	▽ <sub>A</sub> =0	4 PLACES	± ---	± ---	HJWANG02	2009/02/04			1.45MM LOW PROFILE SIM 6 PINS WITH GUIDE RAIL
2010/03/23	CHKD:JITAN	▽ <sub>E</sub> =0	3 PLACES	± ---	± ---	CHECKED BY	DATE			
2010/04/12	APPR:SKTOH	▽ <sub>F</sub> =0	2 PLACES	± 0.15	± ---	YLZHU	2009/02/04			MOLEX INCORPORATED
2010/04/19		▽ <sub>P</sub> =0	1 PLACE	± 0.20	± ---	APPROVED BY	DATE			
			ANGULAR ± 3 °			SKTOH	2010/04/19			SD-105048-001
			DRAFT WHERE APPLICABLE MUST REMAIN WITHIN DIMENSIONS			MATERIAL NO.	SEE TABLE			DOCUMENT NO.
						SIZE	A3	THIS DRAWING CONTAINS INFORMATION THAT IS PROPRIETARY TO MOLEX INCORPORATED AND SHOULD NOT BE USED WITHOUT WRITTEN PERMISSION		SHEET NO.
										1 OF 1