

637-531^{to} 637-609

VARELCO
VARELCO

Series 8343

**Right Angle
'D' Subminiature
Connectors**

The Varelco Series 8343 right-angle 'D' Type subminiature connectors for printed circuit board mounting meet the three world wide accepted standards for different PCB drilling patterns whilst remaining mutually interchangeable.

The connectors are available with 9, 15, 25 & 37 contacts.

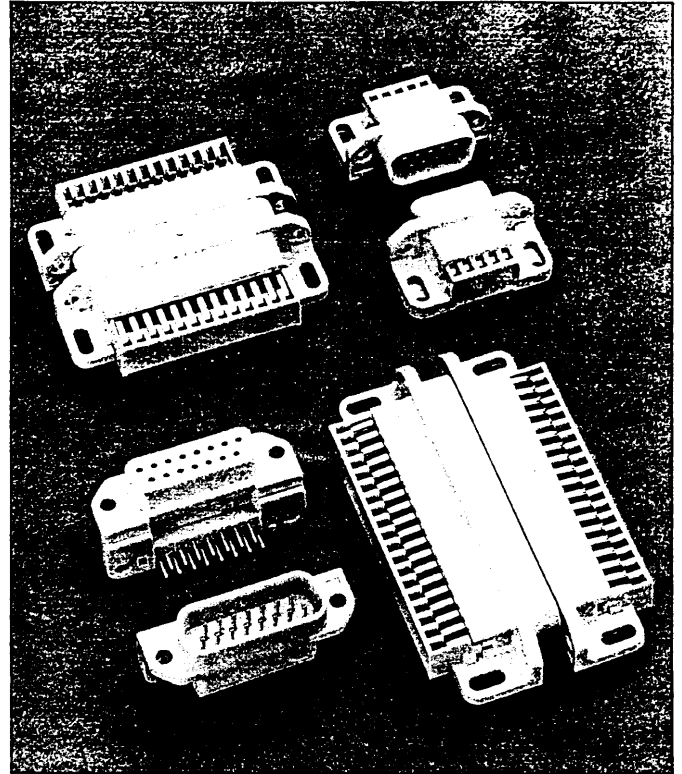
Style 11. US Pattern.

Style 11 connectors are directly interchangeable with U.S. versions and have the following compatible design features.

1. Mounting holes to edge of PCB.
2. Edge of PCB to hole centres of first row of connector spills.
3. Connector mounting hole centres to centre of first row of connector spills.
4. Spacing between contact spill rows.
5. Overall height of plug or socket.

Styles 12 & 13. European Patterns.

Styles 12 & 13 connectors are directly interchangeable with European style connectors. Style 12 have 2.54mm solder spill spacing. Style 13 have 2.84mm solder spill spacing. For both styles the connector mounting hole to edge of PCB dimension and overall height of plug or socket are compatible.



Technical Specification.

Styles 11, 12 & 13.

Sizes:	9, 15, 25 & 37 contacts.
Material:	Insulator—Glass filled thermoplastic polyester. Contacts—Phosphor Bronze.
Finish:	Contacts—Gold over Nickel. Spills—Tin lead Alloy.
Current Rating:	1 ampere.
Working Voltage:	350V DC or AC peak.
Voltage Proof:	1050V DC or AC peak.
Insulation Resistance:	>5 × 10 ⁶ megohms.
Temperature Rating:	–55°C to +105°C.
PCB Thickness:	1.6mm (1/16").



VARELCO LTD

Series 8343

Right Angle 'D'Subminiature Connectors

ORDERING CODE

Connector Code Prefix

10 – Plug

20 – Socket

58 – Special

Series No.

Number of Contact Positions

009 – 9 ways

015 – 15 ways

025 – 25 ways

037 – 37 ways

Plating Variation

0 – Standard Selective Gold Nose/Tin Tail

Style (Refer to Dimension 'E')

11 – 2.84mm US pattern

12 – 2.54mm European Pattern

13 – 2.84mm European Pattern

Screwlock Variation

00 – Without Screwlock

01 – Screwlock fitted

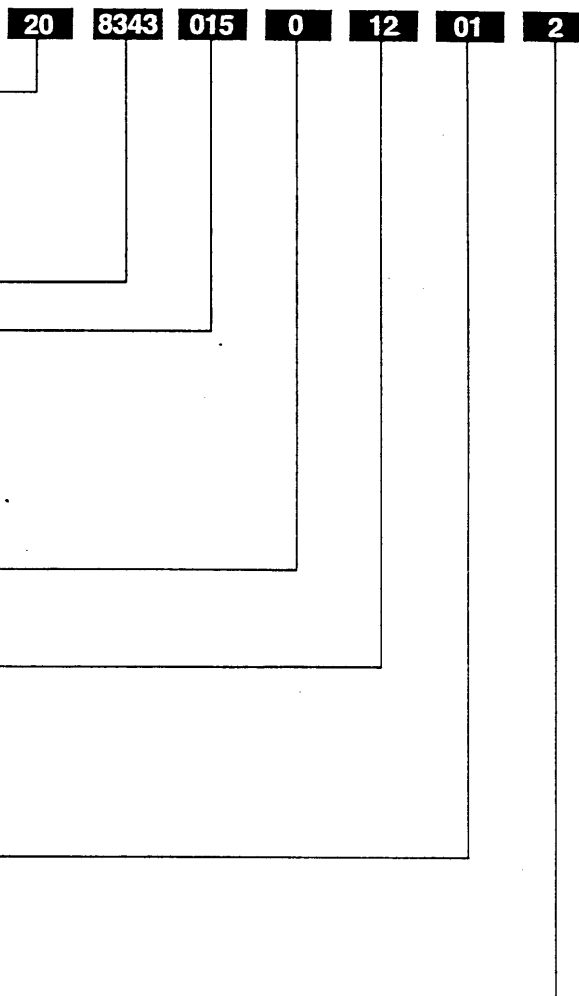
Insulator Colour Variation

0 – Grey

1 = BLACK (SPECIAL) CHECK AVAILABILITY WITH AVX FLEET BEFORE ORDERING

To complete Order Code, select the required specification in each section and list code as a 15 digit number. See example.

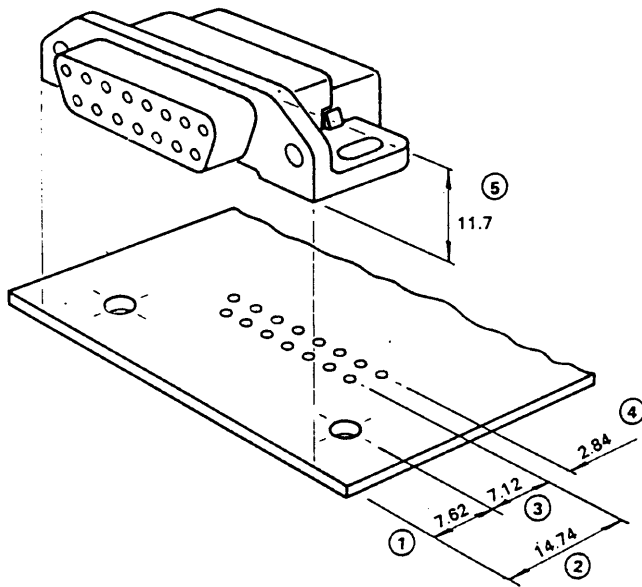
EXAMPLE



VARELCO LTD

Exning Road Newmarket Suffolk England CB8 0AT
Tel: 0638 664514 Telex: 81519 FAX 0638 661233

A member of the Cambridge Electronic Industries Group of Companies



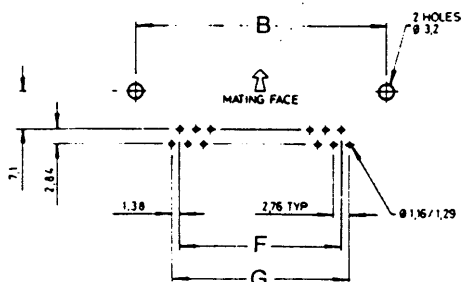
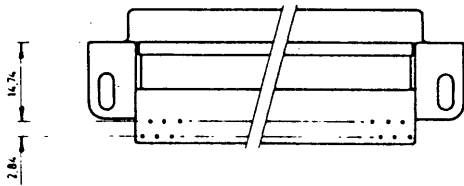
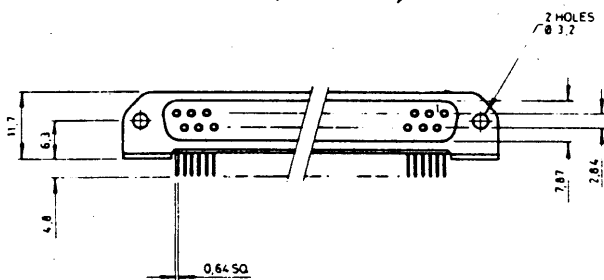
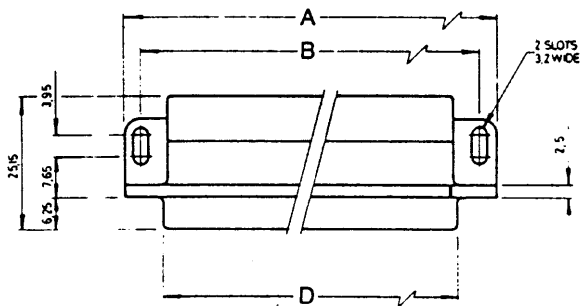
STYLE 11

Directly interchangeable with U.S. standard connectors in 5 ways.

- ① Connector mounting holes to edge of P.C.B.
- ② Edge of P.C.B. to hole centres of first row of connector spills.
- ③ Connector mounting hole centres to centres of first row of connector spills.
- ④ Spacing between contact spill rows.
- ⑤ Overall height of plug or socket.

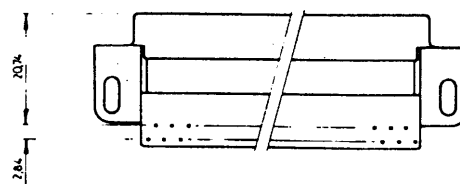
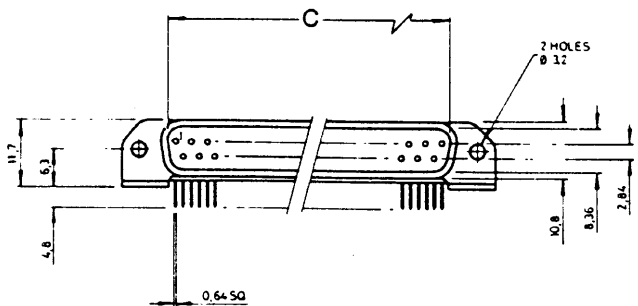
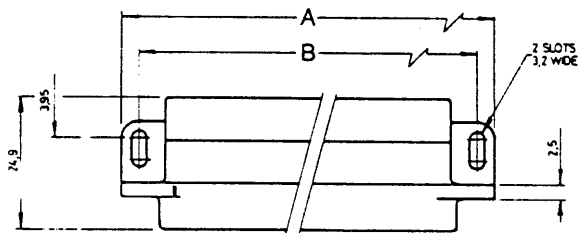
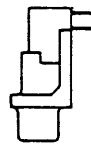
DIMENSIONS STYLE 11

	A	B	C	D	F	G
9 way plug	31.0	25.0	16.9	16.36	8.28	11.04
9 way socket						
15 way plug	39.3	33.3	25.2	24.69	16.56	19.32
15 way socket						
25 way plug	53.0	47.0	38.9	38.41	30.36	33.12
25 way socket						
37 way plug	69.5	63.5	55.4	54.87	46.92	49.68
37 way socket						

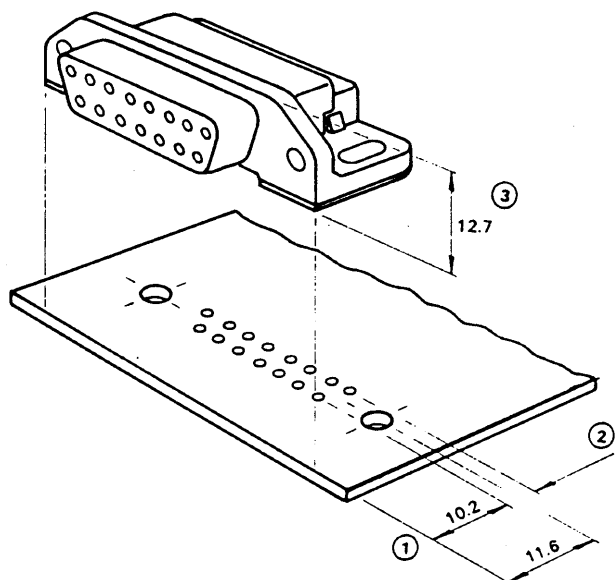


PRINTED CIRCUIT BOARD DRILLING PATTERN

SOCKET
DETAILS



PLUG
DETAILS



STYLE 12 & 13

Directly interchangeable with European style connectors in 9, 15, 25 and 37 contact sizes.

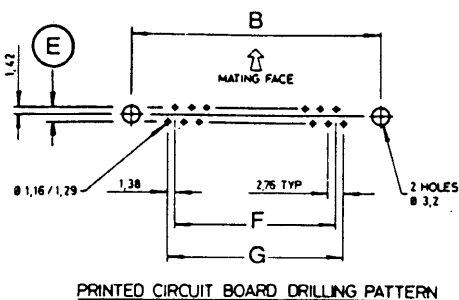
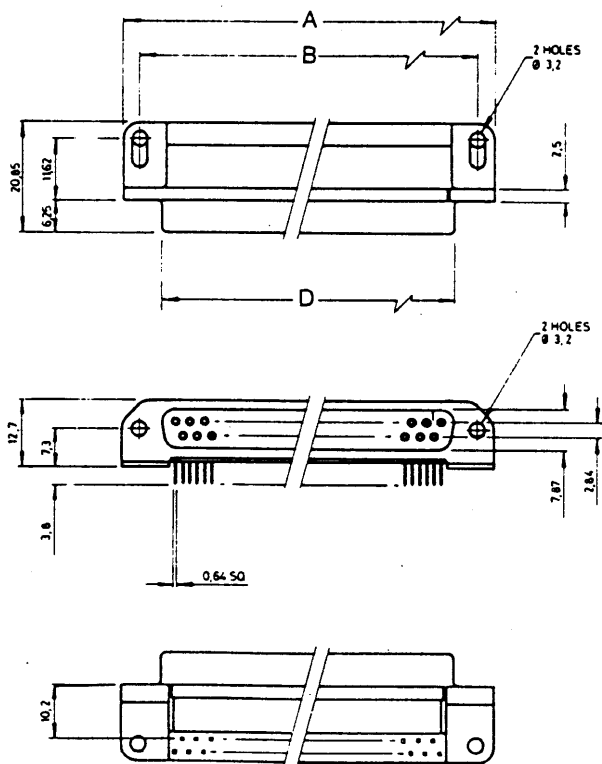
STYLE 12 with 2.54mm solder spill row spacing.

STYLE 13 with 2.84mm solder spill row spacing.

- ① Connector mounting holes to edge of printed circuit board.
- ② Alternative 2.54 or 2.84 pitch of solder spills.
- ③ Overall height of plug or socket.

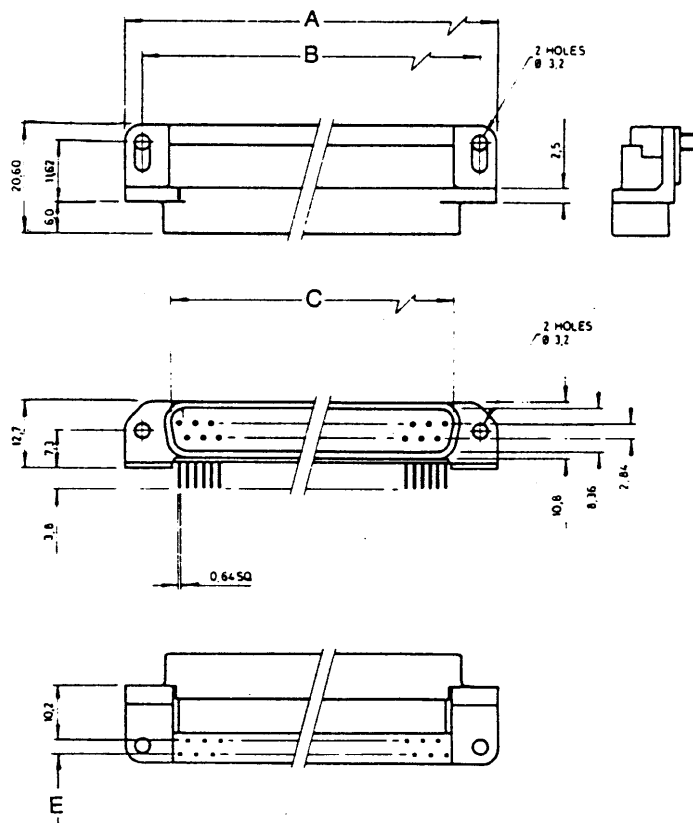
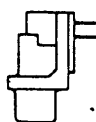
DIMENSIONS STYLE 12 & 13

	A	B	C	D	F	G
9 way plug	31.0	25.0	16.9	16.36	8.28	11.04
9 way socket						
15 way plug	39.3	33.3	25.2	24.69	16.56	19.32
15 way socket						
25 way plug	53.0	47.0	38.9	38.41	30.36	33.12
25 way socket						
37 way plug	69.5	63.5	55.4	54.87	46.92	49.68
37 way socket						



PRINTED CIRCUIT BOARD DRILLING PATTERN

SOCKET DETAILS



PLUG DETAILS

Note: Dimension E should be 2.54 for STYLE 12 and 2.84 for STYLE 13