

PLEASE CHECK WWW.MOLEX.COM FOR LATEST PART INFORMATION

Part Number: [0877910114](#)
Status: **Active**
Description: 2.00mm (.079") Pitch Board-to-Board Panel Detachable, PCB Receptacle, Surface Mount, 14 Circuits, Gold (Au) Selective Plating, Tray Packaging, Lead-free

Documents:

[3D Model](#) [Product Specification PS-87791-014 \(PDF\)](#)
[Drawing \(PDF\)](#) [RoHS Certificate of Compliance \(PDF\)](#)

General

Product Family	PCB Receptacles
Series	87791
Application	Board-to-Board
Comments	Panel Detachable
Product Name	N/A

Physical

Circuits (Loaded)	14
Durability (mating cycles max)	15,000
Glow-Wire Compliant	No
Lock to Mating Part	None
Mated Height (in)	0.309 In
Mated Height (mm)	7.85 mm
Material - Metal	Copper
Material - Plating Mating	Gold
Material - Plating Termination	Tin
Number of Rows	2
Orientation	Vertical
PCB Locator	Yes
PCB Retention	Yes
PCB Thickness Recommended (in)	0.062 In
PCB Thickness Recommended (mm)	1.60 mm
Packaging Type	Tray
Pitch - Mating Interface (in)	0.079 In
Pitch - Mating Interface (mm)	2.00 mm
Polarized to Mating Part	No
Polarized to PCB	No
Stackable	No
Surface Mount Compatible (SMC)	N/A
Temperature Range - Operating	-25°C to +70°C
Termination Interface: Style	Through Hole

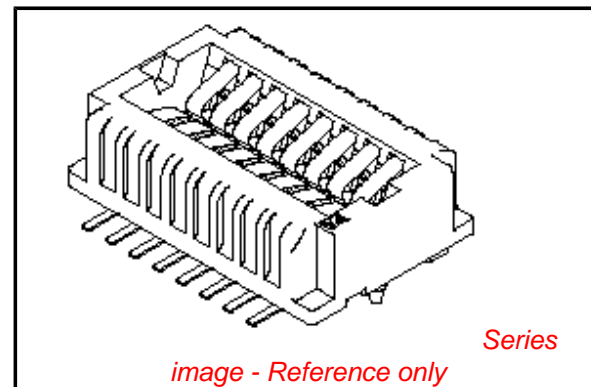
Electrical

Current - Maximum per Contact	1A
Voltage - Maximum	125V

Material Info

Reference - Drawing Numbers

Product Specification	PS-87791-014, RPS-87791-005
Sales Drawing	SD-87791-013



EU RoHS

ELV and RoHS Compliant
REACH SVHC
Contains SVHC: No
Halogen-Free
Status
Not Reviewed

China RoHS



Need more information on product environmental compliance?

Email productcompliance@molex.com
 For a multiple part number RoHS Certificate of Compliance, [click here](#)

Please visit the [Contact Us](#) section for any non-product compliance questions.

Search Parts in this Series

[87791Series](#)

Mates With

[87792-1114](#)

ASSEMBLY P/N	CKT SIZE	DIMENSIONS					
		A	B	C	D	E	F
87791-0014	14	19.00	16.00	15.80	16.00	12.00	6.00
87791-0016	16	21.00	18.00	17.80	18.00	14.00	7.00
87791-0114	14	19.00	16.00	15.80	16.00	12.00	6.00
87791-0116	16	21.00	18.00	17.80	18.00	14.00	7.00
87791-0120	20	25.00	22.00	21.80	22.00	18.00	9.00

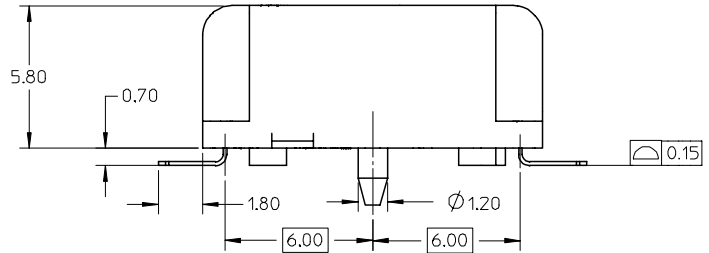
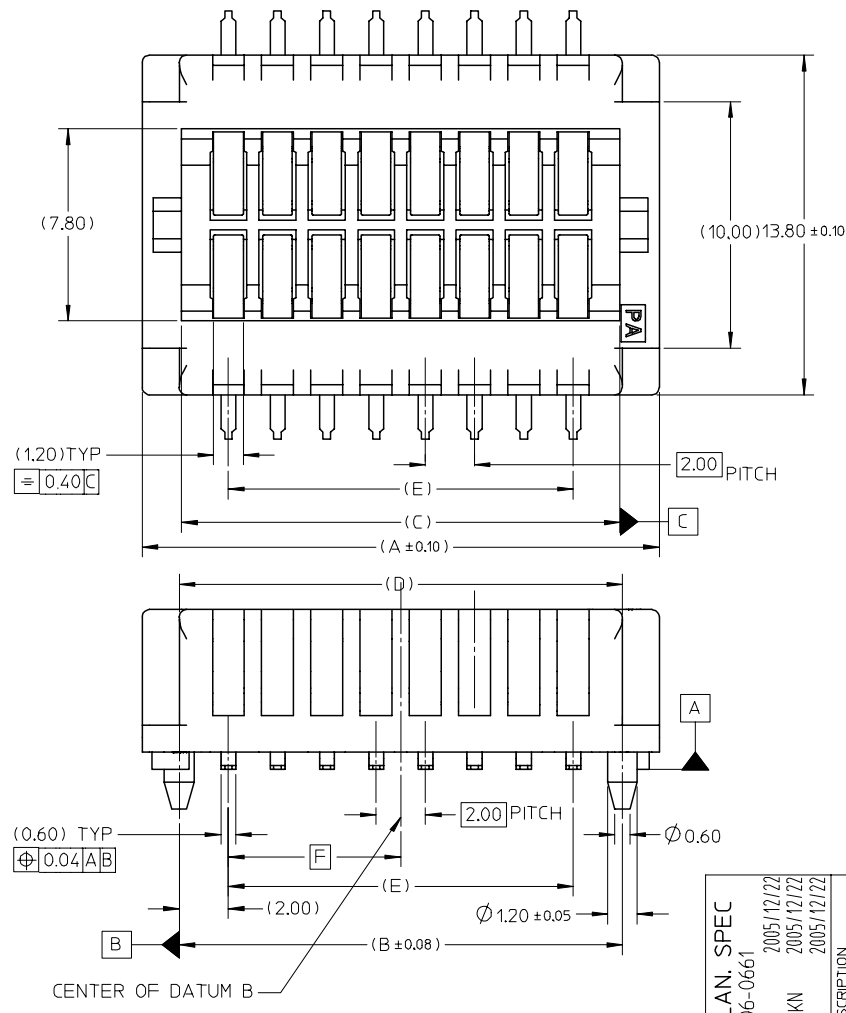
SOLDERTAIL PLATING OPTION

GOLD PLATING ON CONTACT AREA AND TIN-LEAD PLATING OVER NICKEL UNDERPLATE ON SOLDER TAIL AREA.

GOLD PLATING ON CONTACT AREA AND TIN PLATING OVER NICKEL UNDERPLATE ON SOLDER TAIL AREA.

NOTES:

- MATERIAL :
HOUSING : PA46, UL94V-0 (BLACK)
TERMINALS : PHOSPHOR BRONZE
- PLATINGS:
SEE TABLE.
- FOR ILLUSTRATION PURPOSE, 16 CKTS SIZE IS SHOWN.
- PARTS TO BE PACKED IN TRAY.
- REFER TO PRODUCT SPEC, PS-87791-014 FOR PERFORMANCE SPECIFICATIONS.



REV. COPLAN. SPEC	2005/12/22
EC NO: S2006-0661	2005/12/22
DRWN:CGOH	2005/12/22
CHKD:NAGESHKN	2005/12/22
APPR:PTL IM	2005/12/22

QUALITY SYMBOLS	DESCRIPTION
▽=0	
∇=0	

GENERAL TOLERANCES (UNLESS SPECIFIED)	
mm	INCH
4 PLACES ± ---	± ---
3 PLACES ± ---	± ---
2 PLACES ± 0.25	± ---
1 PLACE ± ---	± ---
ANGULAR ± 3 °	
DRAFT WHERE APPLICABLE MUST REMAIN WITHIN DIMENSIONS	

DIMENSION STYLE	
MM ONLY	
DRAWN BY	DATE
CGOH	2004/08/05
CHECKED BY	DATE
PTL IM	2004/10/01
APPROVED BY	DATE
SCLOW	2004/11/01
MATERIAL NO.	
SEE TABLE	
SIZE	
A3	

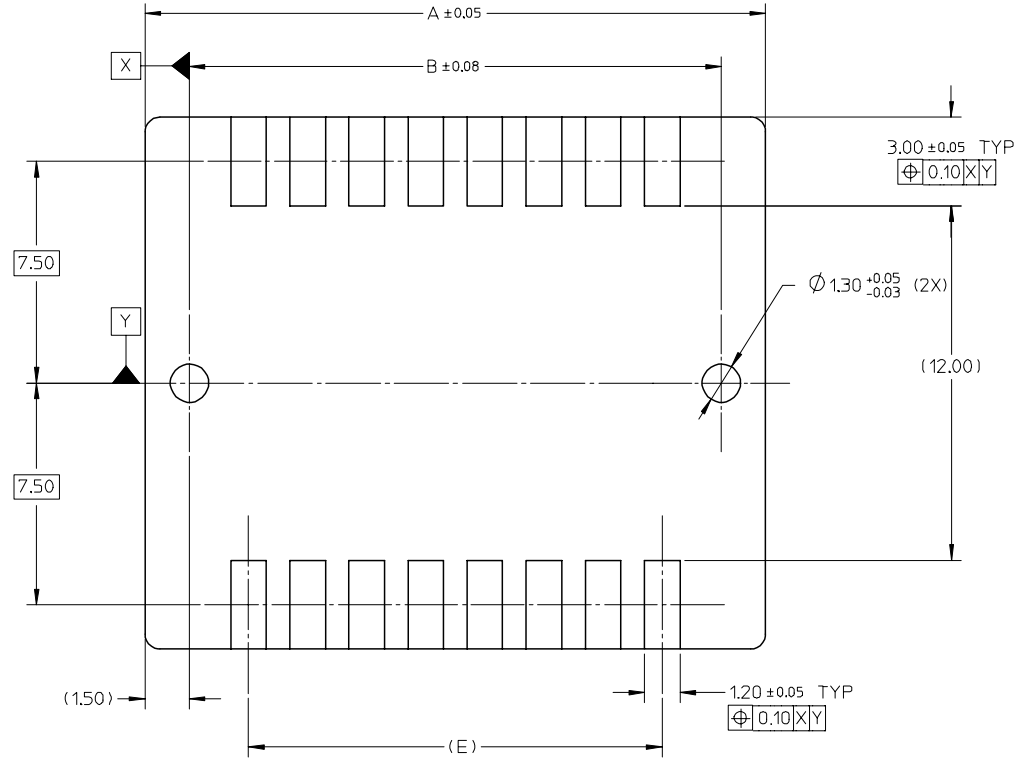
SCALE	DESIGN UNITS	THIRD ANGLE PROJECTION
NTS	METRIC	☉
TITLE		
2.0 B/B CONNECTOR, SMT (PANEL DETACHABLE TYPE)		
APPROVED BY		
MOLEX INCORPORATED		
DOCUMENT NO.		SHEET NO.
SD-87791-013		1 OF 2
THIS DRAWING CONTAINS INFORMATION THAT IS PROPRIETARY TO MOLEX INCORPORATED AND SHOULD NOT BE USED WITHOUT WRITTEN PERMISSION		

10 9 8 7 6 5 4 3 2 1

F

F

RECOMMENDED PCB LAYOUT



E

E

D

D

C

C

B

B

A

A

REV. COPLAN. SPEC EC NO: S2006-0661 DRWN:CGH CHKD:NGESHKN APPR:PTL IM	2005/12/22 2005/12/22 2005/12/22	QUALITY SYMBOLS ▽=0 ◻=0	GENERAL TOLERANCES (UNLESS SPECIFIED)		DIMENSION STYLE MM ONLY		SCALE NTS	DESIGN UNITS METRIC	THIRD ANGLE PROJECTION			
				mm	INCH	DRAWN BY CGOH	DATE 2004/08/05	TITLE 2.0 B/B CONNECTOR, SMT (PANEL DETACHABLE TYPE)				
			4 PLACES	± ---	± ---	CHECKED BY PTL IM	DATE 2004/10/01	APPROVED BY SCLOW				
			3 PLACES	± ---	± ---	DATE 2004/11/01	MATERIAL NO. SEE TABLE					
2 PLACES	± 0.25	± ---	ANGULAR ± 3 °		DOCUMENT NO. SD-87791-013		SHEET NO. 2 OF 2					
1 PLACE	± ---	± ---	DRAFT WHERE APPLICABLE MUST REMAIN WITHIN DIMENSIONS		SIZE A3		THIS DRAWING CONTAINS INFORMATION THAT IS PROPRIETARY TO MOLEX INCORPORATED AND SHOULD NOT BE USED WITHOUT WRITTEN PERMISSION					

9 8 7 6 5 4 3 2 1