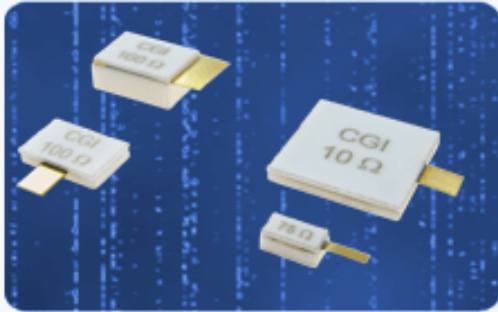


# Component General, Inc.

## ■ Stripline Chip Terminations

### ■ MECHANICAL SPECIFICATIONS



Substrate : Beryllium Oxide Ceramic.

Contact: Beryllium Copper - Gold Plated per MIL-G-45204

Covers : Alumina Ceramic.

Tolerance :  $\pm .010$ " Unless specified.

www.DataSheet4U.com

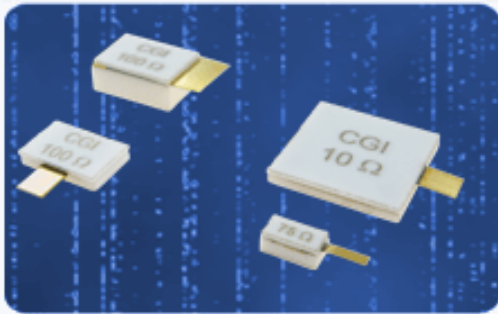
high power chip terminations product selection chart

CGI P/N	Power	Resistance (Ohms)	Standard Tolerance
Note: Click a part number from the list below to see a data sheet for that part.			
<a href="#">CCT-100-2</a>	62 W	10 - 1000	5 %
<a href="#">CCT-100-2B</a>	40 W	10 - 1000	5 %
<a href="#">CCT-230-1</a>	150 W	10 - 1000	5 %
<a href="#">CCT-230-2</a>	40 W	10 - 1000	5 %
<a href="#">CCT-250-1</a>	170 W	10 - 1000	5 %
<a href="#">CCT-250-1B</a>	80 W	10 - 1000	5 %
<a href="#">CCT-250-2</a>	330 W	10 - 1000	5 %
<a href="#">CCT-250-2B</a>	100 W	10 - 1000	5 %
<a href="#">CCT-250-2C</a>	160 W	10 - 1000	5 %
<a href="#">CCT-375-1</a>	350 W	10 - 1000	5 %
<a href="#">CCT-375-1B</a>	250 W	10 - 1000	5 %
<a href="#">CCT-375-2</a>	250 W	10 - 1000	5 %
<a href="#">CCT-375-3</a>	250 W	10 - 1000	5 %

# Component General, Inc.

## ■ Stripline Chip Terminations

### ■ MECHANICAL SPECIFICATIONS



Substrate : Beryllium Oxide Ceramic.

Contact: Beryllium Copper - Gold Plated per MIL-G-45204

Covers : Alumina Ceramic.

Tolerance :  $\pm .010$ " Unless specified.

www.DataSheet4U.com

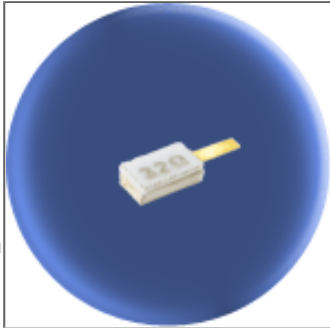
high power chip terminations product selection chart

CGI P/N	Power	Resistance (Ohms)	Standard Tolerance
Note: Click a part number from the list below to see a data sheet for that part.			
<a href="#">CCT-500-1</a>	500 W	10 - 1000	5 %
<a href="#">CCT-625-1</a>	700 W	10 - 1000	5 %
<a href="#">CCT-625-2</a>	180 W	10 - 1000	5 %
<a href="#">CCT-1000-1</a>	1000 W	10 - 1000	5 %

# Component General, Inc.

P/N: CCT-100-2

Stripline Chip W/Cover Terminations



## Mechanical Specifications

### Substrate:

Beryllium Oxide Ceramic.

### Contact:

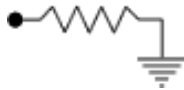
Beryllium Copper, Gold Plated per MIL-G-45204. Length: 0.125" Min., Width: 0.040", Thickness 0.004"  $\pm$  0.002".

### Covers:

Alumina Ceramic.

### Tolerance:

$\pm$  0.010" unless specified.



Note: Power is based on infinite and ideal heat sink with the heat sink at 100°C

## Electrical Specifications

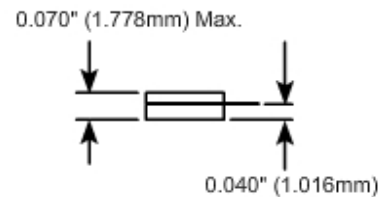
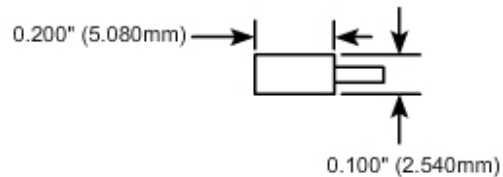
### Resistance Value:

10 - 1000  $\Omega$  or as required. Other values available upon request.

### Standard Resistance Tolerance:

5% Other tolerances available upon request.

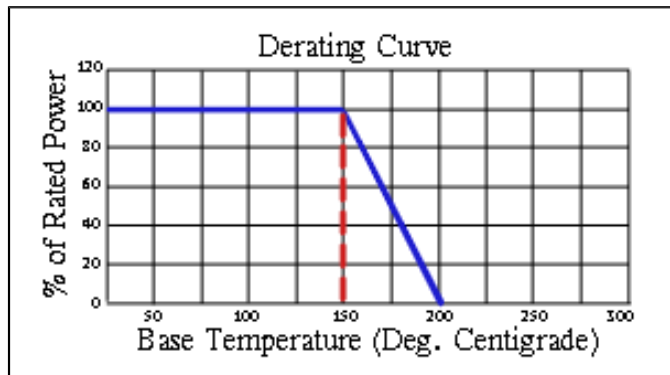
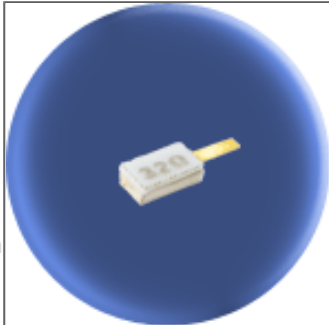
## Part Dimensions



# Component General, Inc.

P/N: CCT-100-2B

Stripline Chip W/Cover Terminations



## Mechanical Specifications

### Substrate:

Beryllium Oxide Ceramic.

### Contact:

Beryllium Copper, Gold Plated per MIL-G-45204.

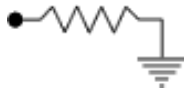
Length: 0.125" Min., Width: 0.040", Thickness 0.004"  $\pm$  0.002".

### Covers:

Alumina Ceramic.

### Tolerance:

$\pm$  0.010" unless specified.



Note: Power is based on infinite and ideal heat sink with the heat sink at 100°C

## Electrical Specifications

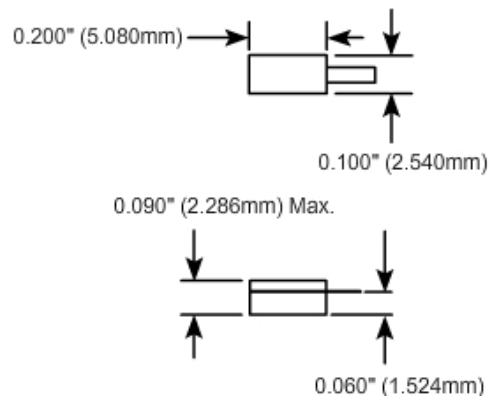
### Resistance Value:

10 - 1000  $\Omega$  or as required. Other values available upon request.

### Standard Resistance Tolerance:

$\pm$  5% Other tolerances available upon request.

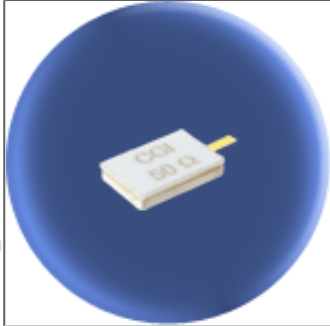
## Part Dimensions



# Component General, Inc.

P/N: CCT-230-1

Stripline Chip W/Cover Terminations



## Mechanical Specifications

### Substrate:

Beryllium Oxide Ceramic.

### Contact:

Beryllium Copper, Gold Plated per MIL-G-45204.

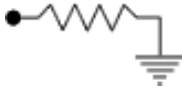
Length: 0.125" Min., Width: 0.040", Thickness 0.004"  $\pm$  0.002".

### Covers:

Alumina Ceramic.

### Tolerance:

$\pm$  0.010" unless specified.



Note: Power is based on infinite and ideal heat sink with the heat sink at 100°C

## Electrical Specifications

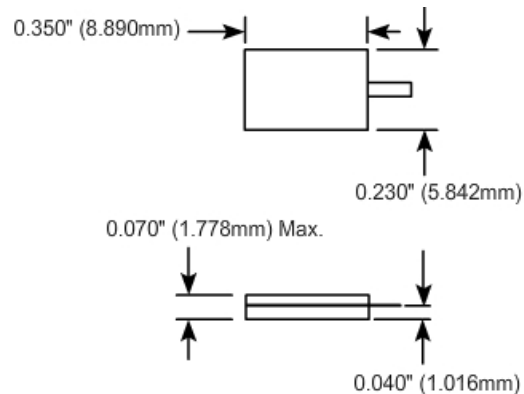
### Resistance Value:

10 - 1000  $\Omega$  or as required. Other values available upon request.

### Standard Resistance Tolerance:

$\pm$  5% Other tolerances available upon request.

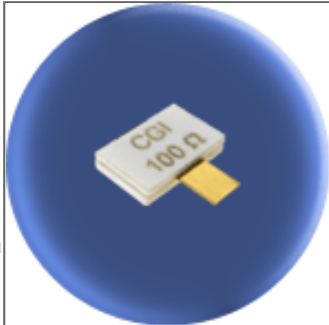
## Part Dimensions



# Component General, Inc.

P/N: CCT-230-2

Stripline Chip W/Cover Terminations



## Mechanical Specifications

### Substrate:

Beryllium Oxide Ceramic.

### Contact:

Beryllium Copper, Gold Plated per MIL-G-45204.

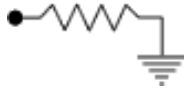
Length: 0.125" Min., Width: 0.120", Thickness 0.004"  $\pm$  0.002".

### Covers:

Alumina Ceramic.

### Tolerance:

$\pm$  0.010" unless specified.



Note: Power is based on infinite and ideal heat sink with the heat sink at 100°C

## Electrical Specifications

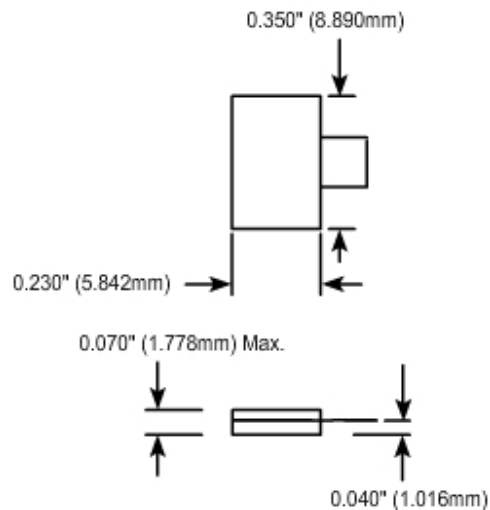
### Resistance Value:

10 - 1000  $\Omega$  or as required. Other values available upon request.

### Standard Resistance Tolerance:

$\pm$  5% Other tolerances available upon request.

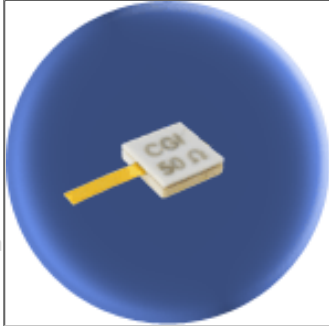
## Part Dimensions



# Component General, Inc.

P/N: CCT-250-1

Stripline Chip W/Cover Terminations



## Mechanical Specifications

### Substrate:

Beryllium Oxide Ceramic.

### Contact:

Beryllium Copper, Gold Plated per MIL-G-45204.

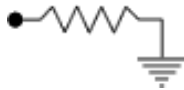
Length: 0.125" Min., Width: 0.060", Thickness 0.004"  $\pm$  0.002".

### Covers:

Alumina Ceramic.

### Tolerance:

$\pm$  0.010" unless specified.



Note: Power is based on infinite and ideal heat sink with the heat sink at 100°C

## Electrical Specifications

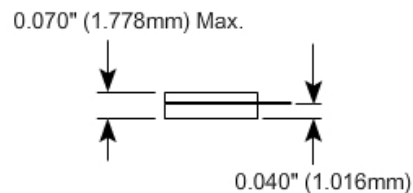
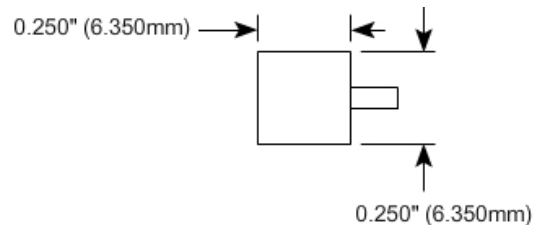
### Resistance Value:

10 - 1000  $\Omega$  or as required. Other values available upon request.

### Standard Resistance Tolerance:

$\pm$  5% Other tolerances available upon request.

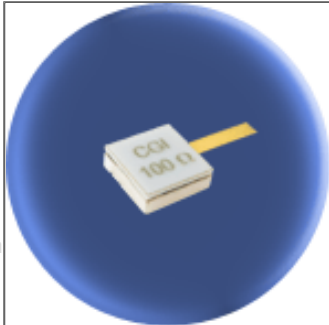
## Part Dimensions



# Component General, Inc.

P/N: CCT-250-1B

Stripline Chip W/Cover Terminations



## Mechanical Specifications

### Substrate:

Beryllium Oxide Ceramic.

### Contact:

Beryllium Copper, Gold Plated per MIL-G-45204.

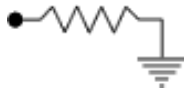
Length: 0.125" Min., Width: 0.060", Thickness 0.004"  $\pm$  0.002".

### Covers:

Alumina Ceramic.

### Tolerance:

$\pm$  0.010" unless specified.



Note: Power is based on infinite and ideal heat sink with the heat sink at 100°C

## Electrical Specifications

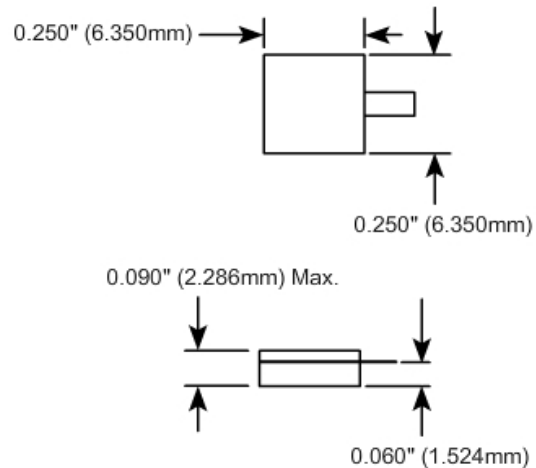
### Resistance Value:

10 - 1000  $\Omega$  or as required. Other values available upon request.

### Standard Resistance Tolerance:

$\pm$  5% Other tolerances available upon request.

## Part Dimensions

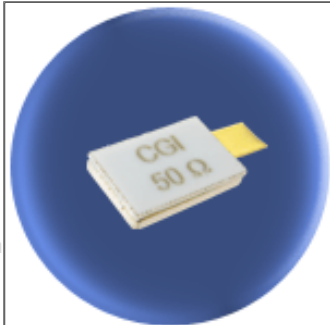




# Component General, Inc.

P/N: CCT-250-2

Stripline Chip W/Cover Terminations



## Mechanical Specifications

### Substrate:

Beryllium Oxide Ceramic.

### Contact:

Beryllium Copper, Gold Plated per MIL-G-45204.

Length: 0.125" Min., Width: 0.120", Thickness 0.004" ± 0.002".

### Covers:

Alumina Ceramic.

### Tolerance:

± 0.010" unless specified.

## Electrical Specifications

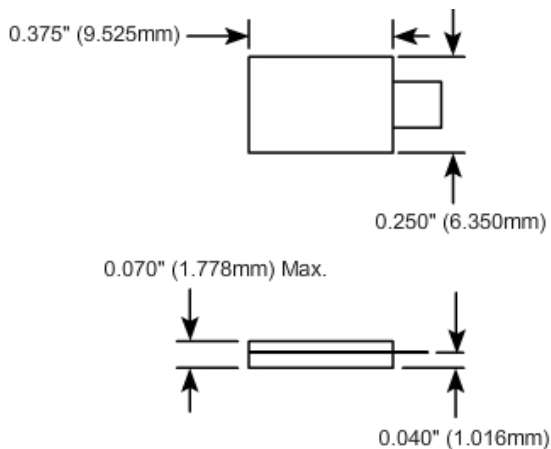
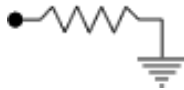
### Resistance Value:

10 - 1000 Ω or as required. Other values available upon request.

### Standard Resistance Tolerance:

± 5% Other tolerances available upon request.

## Part Dimensions

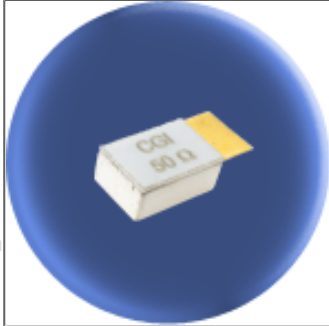


Note: Power is based on infinite and ideal heat sink with the heat sink at 100°C

# Component General, Inc.

P/N: CCT-250-2B

Stripline Chip W/Cover Terminations



## Mechanical Specifications

### Substrate:

Beryllium Oxide Ceramic.

### Contact:

Beryllium Copper, Gold Plated per MIL-G-45204.

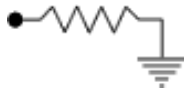
Length 0.125" Min., Width 0.250"  
Thickness  $0.004 \pm 0.002$ ".

### Covers:

Alumina Ceramic.

### Tolerance:

$\pm 0.010$ " unless specified.



Note: Power is based on infinite and ideal heat sink with the heat sink at 100°C

## Electrical Specifications

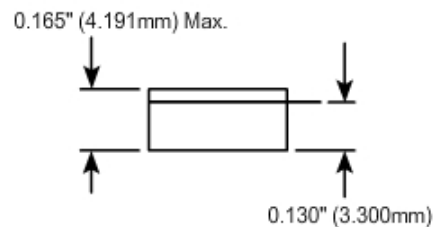
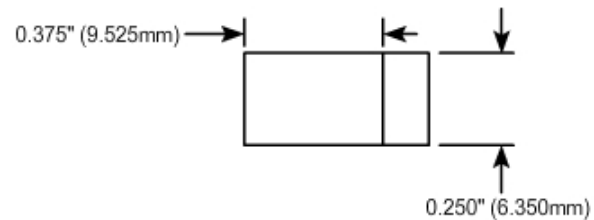
### Resistance Value:

10 - 1000  $\Omega$  or as required. Other values available upon request.

### Standard Resistance Tolerance:

$\pm 5\%$  Other tolerances available upon request.

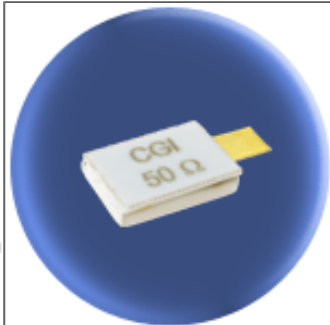
## Part Dimensions



# Component General, Inc.

P/N: CCT-250-2C

Stripline Chip W/Cover Terminations



## Mechanical Specifications

### Substrate:

Beryllium Oxide Ceramic.

### Contact:

Beryllium Copper, Gold Plated per MIL-G-45204.

Length: 0.125" Min., Width: 0.120", Thickness 0.004"  $\pm$  0.002".

### Covers:

Alumina Ceramic.

### Tolerance:

$\pm$  0.010" unless specified.

## Electrical Specifications

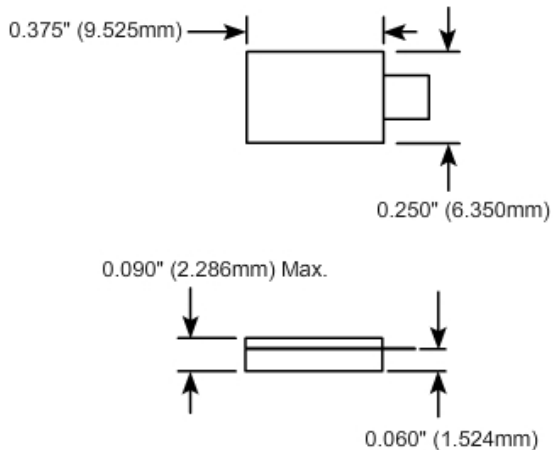
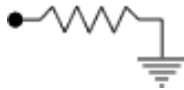
### Resistance Value:

10 - 1000  $\Omega$  or as required. Other values available upon request.

### Standard Resistance Tolerance:

$\pm$  5% Other tolerances available upon request.

## Part Dimensions

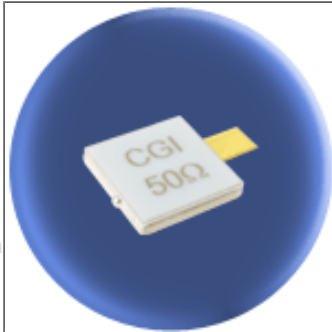


Note: Power is based on infinite and ideal heat sink with the heat sink at 100°C

# Component General, Inc.

P/N: CCT-375-1

Stripline Chip W/Cover Terminations



## Mechanical Specifications

### Substrate:

Beryllium Oxide Ceramic.

### Contact:

Beryllium Copper, Gold Plated per MIL-G-45204.

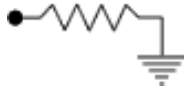
Length: 0.125" Min., Width: 0.120", Thickness 0.004"  $\pm$  0.002".

### Covers:

Alumina Ceramic.

### Tolerance:

$\pm$  0.010" unless specified.



Note: Power is based on infinite and ideal heat sink with the heat sink at 100°C

## Electrical Specifications

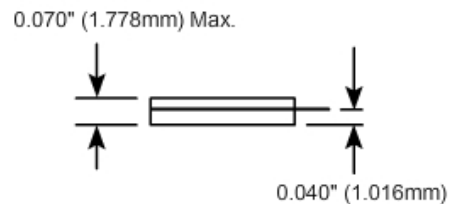
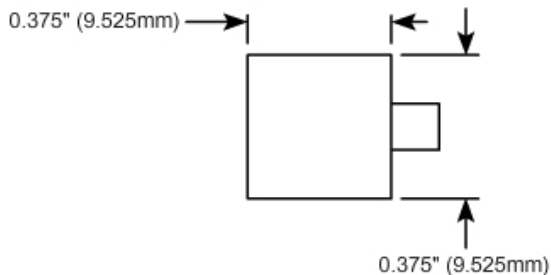
### Resistance Value:

10 - 1000  $\Omega$  or as required. Other values available upon request.

### Standard Resistance Tolerance:

$\pm$  5% Other tolerances available upon request.

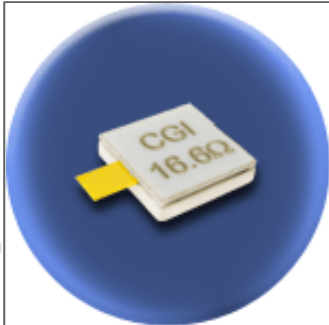
## Part Dimensions



# Component General, Inc.

P/N: CCT-375-1B

Stripline Chip W/Cover Terminations



## Mechanical Specifications

### Substrate:

Beryllium Oxide Ceramic.

### Contact:

Beryllium Copper, Gold Plated per MIL-G-45204.

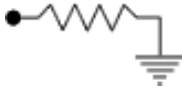
Length: 0.125" Min., Width: 0.120", Thickness 0.004"  $\pm$  0.002".

### Covers:

Alumina Ceramic.

### Tolerance:

$\pm$  0.010" unless specified.



Note: Power is based on infinite and ideal heat sink with the heat sink at 100°C

## Electrical Specifications

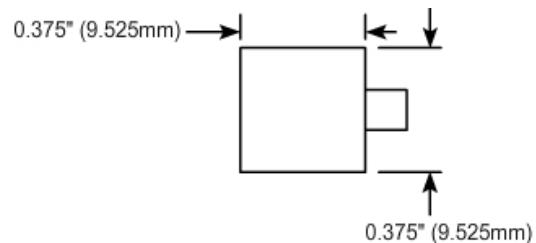
### Resistance Value:

10 - 1000  $\Omega$  or as required. Other values available upon request.

### Standard Resistance Tolerance:

$\pm$  5% Other tolerances available upon request.

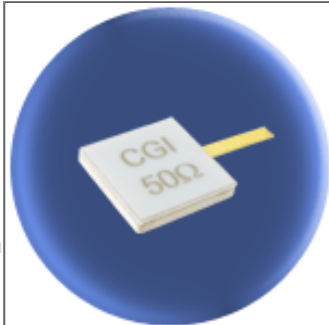
## Part Dimensions



# Component General, Inc.

P/N: CCT-375-2

Stripline Chip W/Cover Terminations



## Mechanical Specifications

### Substrate:

Beryllium Oxide Ceramic.

### Contact:

Beryllium Copper, Gold Plated per MIL-G-45204.

Length: 0.125" Min., Width: 0.060", Thickness 0.004"  $\pm$  0.002".

### Covers:

Alumina Ceramic.

### Tolerance:

$\pm$  0.010" unless specified.

## Electrical Specifications

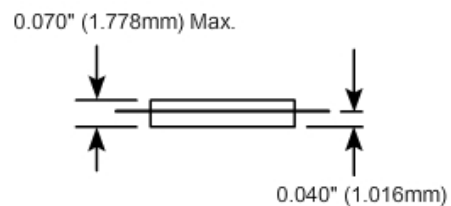
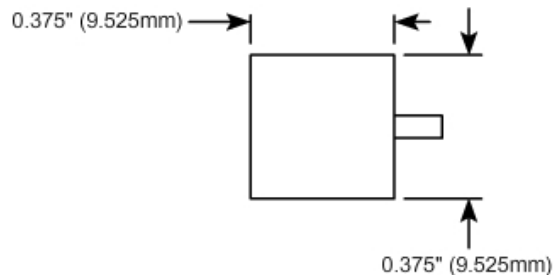
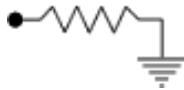
### Resistance Value:

10 - 1000  $\Omega$  or as required. Other values available upon request.

### Standard Resistance Tolerance:

$\pm$  5% Other tolerances available upon request.

## Part Dimensions

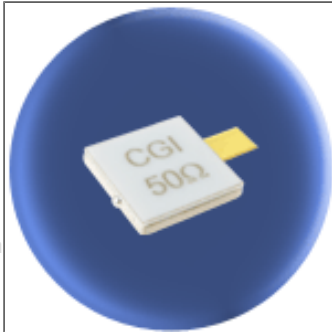


Note: Power is based on infinite and ideal heat sink with the heat sink at 100°C

# Component General, Inc.

P/N: CCT-375-3

Stripline Chip W/Cover Terminations



## Mechanical Specifications

### Substrate:

Beryllium Oxide Ceramic.

### Contact:

Beryllium Copper, Gold Plated per MIL-G-45204.

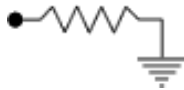
Length: 0.125" Min., Width: 0.120", Thickness 0.004"  $\pm$  0.002".

### Covers:

Alumina Ceramic.

### Tolerance:

$\pm$  0.010" unless specified.



Note: Power is based on infinite and ideal heat sink with the heat sink at 100°C

## Electrical Specifications

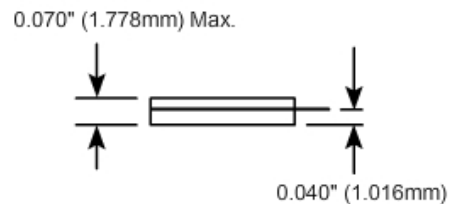
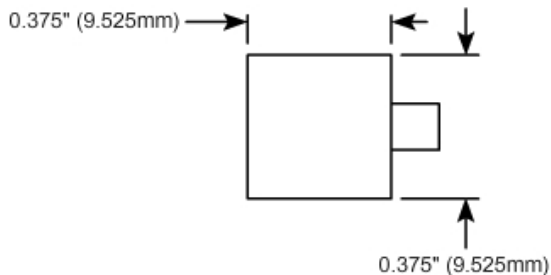
### Resistance Value:

10 - 1000  $\Omega$  or as required. Other values available upon request.

### Standard Resistance Tolerance:

$\pm$  5% Other tolerances available upon request.

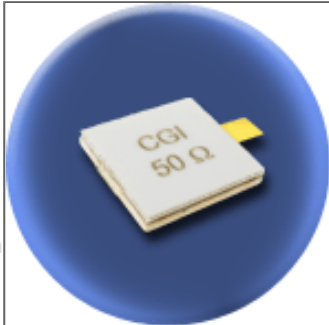
## Part Dimensions



# Component General, Inc.

P/N: CCT-500-1

Stripline Chip W/Cover Terminations



## Mechanical Specifications

### Substrate:

Beryllium Oxide Ceramic.

### Contact:

Beryllium Copper, Gold Plated per MIL-G-45204.

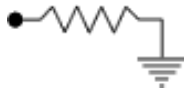
Length: 0.125" Min., Width: 0.120", Thickness 0.004"  $\pm$  0.002".

### Covers:

Alumina Ceramic.

### Tolerance:

$\pm$  0.010" unless specified.



Note: Power is based on infinite and ideal heat sink with the heat sink at 100°C

## Electrical Specifications

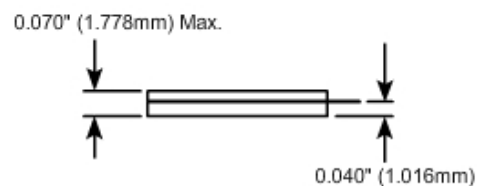
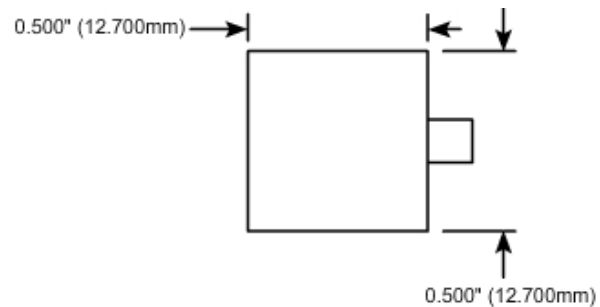
### Resistance Value:

10 - 1000  $\Omega$  or as required. Other values available upon request.

### Standard Resistance Tolerance:

$\pm$  5% Other tolerances available upon request.

## Part Dimensions

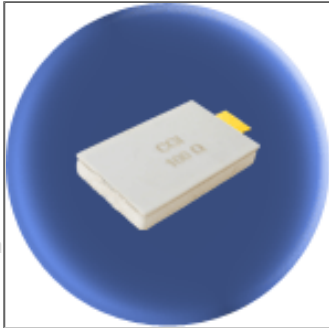




# Component General, Inc.

P/N: CCT-625-1

Stripline Chip W/Cover Resistors



## Mechanical Specifications

### Substrate:

Beryllium Oxide Ceramic.

### Contact:

Beryllium Copper, Gold Plated per MIL-G-45204.

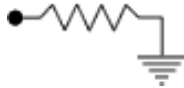
Length: 0.125" Min., Width: 0.250", Thickness 0.004"  $\pm$  0.002".

### Covers:

Alumina Ceramic.

### Tolerance:

$\pm$  0.010" unless specified.



Note: Power is based on infinite and ideal heat sink with the heat sink at 100°C

## Electrical Specifications

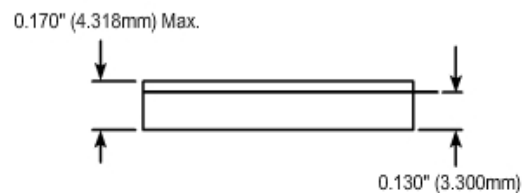
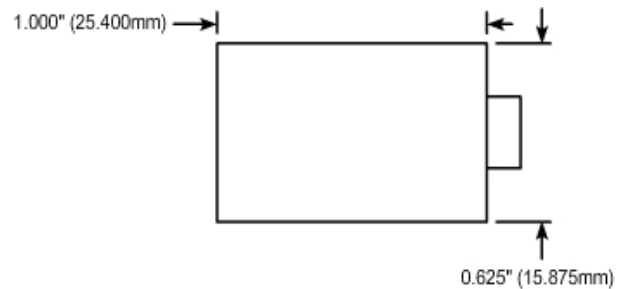
### Resistance Value:

10 - 1000  $\Omega$  or as required. Other values available upon request.

### Standard Resistance Tolerance:

$\pm$  5% Other tolerances available upon request.

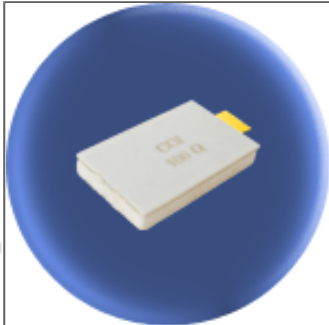
## Part Dimensions



# Component General, Inc.

P/N: CCT-625-2

Stripline Chip W/Cover Resistors



## Mechanical Specifications

### Substrate:

Beryllium Oxide Ceramic.

### Contact:

Beryllium Copper, Gold Plated per MIL-G-45204.

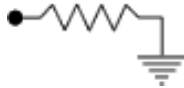
Length: 0.125" Min., Width: 0.250", Thickness 0.004"  $\pm$  0.002".

### Covers:

Alumina Ceramic.

### Tolerance:

$\pm$  0.010" unless specified.



Note: Power is based on infinite and ideal heat sink with the heat sink at 100°C

## Electrical Specifications

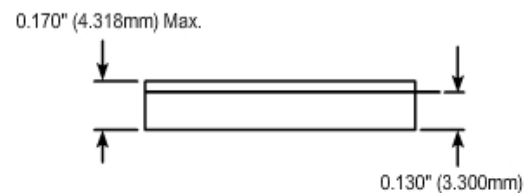
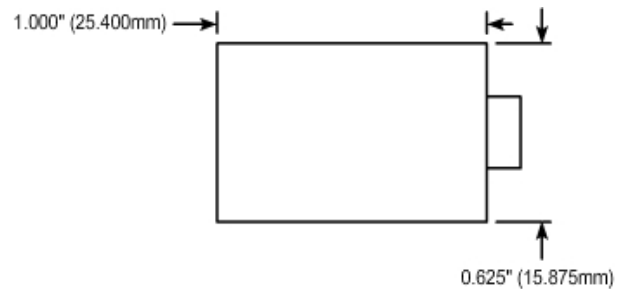
### Resistance Value:

10 - 1000  $\Omega$  or as required. Other values available upon request.

### Standard Resistance Tolerance:

$\pm$  5% Other tolerances available upon request.

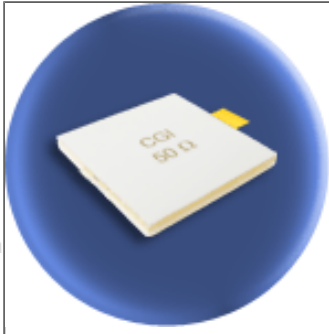
## Part Dimensions



# Component General, Inc.

P/N: CCT-1000-1

Stripline Chip W/Cover Terminations



## Mechanical Specifications

### Substrate:

Beryllium Oxide Ceramic.

### Contact:

Beryllium Copper, Gold Plated per MIL-G-45204.

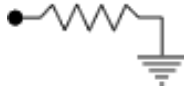
Length: 0.125" Min., Width: 0.250", Thickness 0.004" ± 0.002".

### Covers:

Alumina Ceramic.

### Tolerance:

± 0.010" unless specified.



Note: Power is based on infinite and ideal heat sink with the heat sink at 100°C

## Electrical Specifications

### Resistance Value:

10 - 1000 Ω or as required. Other values available upon request.

### Standard Resistance Tolerance:

± 5% Other tolerances available upon request.

## Part Dimensions

