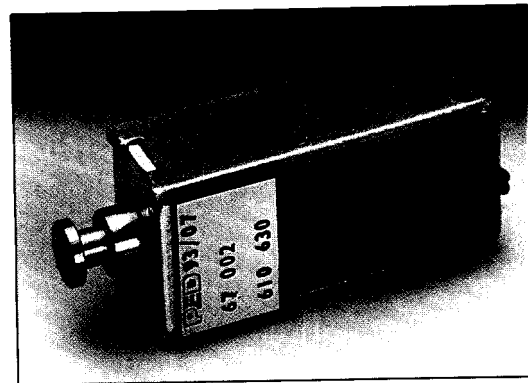


530 270/281

# Solenoids

## Series 67 Latching Solenoid



### GENERAL DESCRIPTION

- DC pulse operated
- Magnet maintained for zero power consumption
- Ideal for low energy applications (i.e. dry cells)

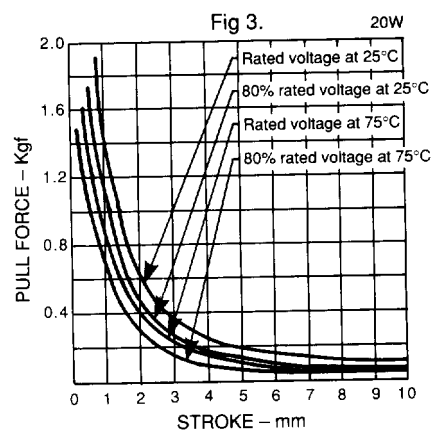
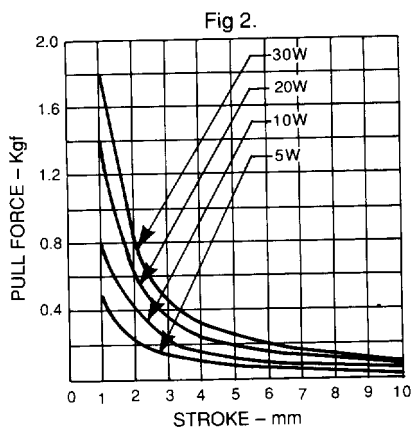
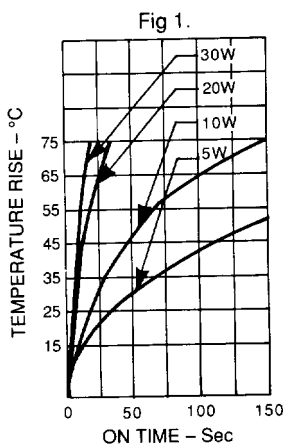
### PERFORMANCE

	ITEM	SPECIFICATION
Electrical	Dielectric strength	500V RMS 50Hz
	Drive details (released by polarity reversal)	(i) DC control 5, 6, 12, 24 & 48V available as standard. (ii) 5, 10, 20 & 30 watt versions available as standard. Max pulse durations shown in fig 1. (iii) Single coil construction. Apply +ve on Red to operate and -ve on Red to release. An external force is required to retract the plunger to the open position.
Mechanical	Permanent magnet holding force.	1 Kgf typical (Measured after applying rated voltage at 25°C)
	Weight	35g
Environmental	Operating temperature	-5°C to +75°C

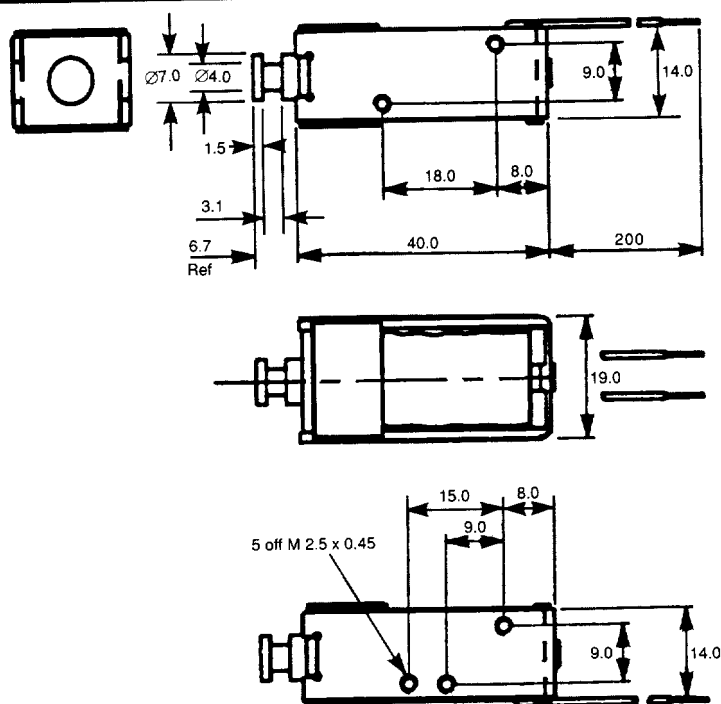
**PED**

BLP COMPONENTS LTD

## FORCE/STROKE CURVE



## DIMENSIONS (mm)



## CODING

6 7		1 2 0			6 1 0			X X 0		
Coil	5V	5W			10W			20W		
	6V	50			51			52		
	12V	54			55			56		
	24V	62			63			64		
	48V	72			73			74		
		84			85			86		
								87		

Coil resistance, calculate  $R = \frac{V^2}{W}$



COMPONENTS  
CUSTOMER DRIVEN  
INNOVATION

We reserve the right to change without prior notice the information contained in this leaflet

Consumer Protection Act 1987 and Health & Safety at Work Act etc., 1974

Our products are designed, manufactured and tested to high quality standards. Some of them are capable of being operated by and capable of switching high voltages and/or currents. Care must therefore be exercised in the installation, protection and use of such products. If in any doubt please contact your supplier or PED Engineering Department immediately.

Exning Road, Newmarket, Suffolk CB8 0AX, England  
Tel: (0638) 665161 Telex: 81245 BLP Fax: (0638) 660718

