

PLEASE CHECK WWW.MOLEX.COM FOR LATEST PART INFORMATION

Part Number: [0595895000](#)
Status: **Active**
Description: CRC™ Shielded Rectangular I/O Cable Clamp

Documents:

[Drawing \(PDF\)](#) [Product Specification PS-51300-001 \(PDF\)](#)
[Product Specification PS-51238-016 \(PDF\)](#) [RoHS Certificate of Compliance \(PDF\)](#)
[Product Specification PS-51238-017 \(PDF\)](#)

General

Product Family	I/O Connectors
Series	59589
Application	N/A
Component Type	Cable Clamp
Product Name	CRC™
Type	N/A

Physical

Circuits (Loaded)	N/A
Gender	Female
Lock to Mating Part	Yes
Material - Metal	Stainless Steel
Material - Plating Mating	n/a
Orientation	Vertical
Packaging Type	Bag
Panel Mount	N/A
Pitch - Mating Interface (in)	0.000 In
Pitch - Mating Interface (mm)	0.00 mm
Polarized to Mating Part	N/A
Temperature Range - Operating	-40°C to +105°C
Termination Interface: Style	N/A

Electrical

Current - Maximum per Contact	N/A
-------------------------------	-----

Material Info

Reference - Drawing Numbers

Product Specification	PS-51238-016, PS-51238-017, PS-51300-001
Sales Drawing	SD-59589-002



EU RoHS
ELV and RoHS
Compliant
REACH SVHC
 Not Reviewed
Halogen-Free
Status
 Not Reviewed

China RoHS



Need more information on product environmental compliance?

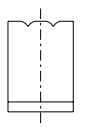
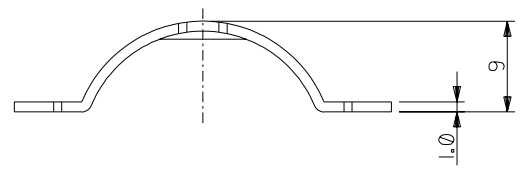
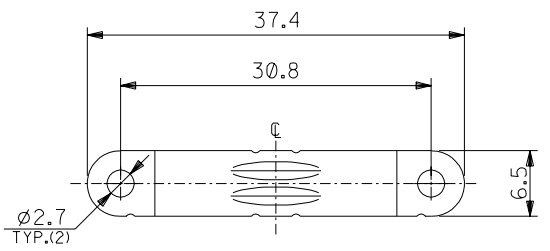
Email productcompliance@molex.com
 For a multiple part number RoHS Certificate of Compliance, [click here](#)

Please visit the [Contact Us](#) section for any non-product compliance questions.

Search Parts in this Series
[59589Series](#)

Use With
 59587 and 59590 cover, [58203](#) cross recessed head screw

DWG. NO. SD-59589-002



注記
NOTES

1. 材質
MATERIAL
ステンレス鋼
STAINLESS STEEL
2. 適合カバーA : 59587-5010
APPLICABLE COVER A : 59587-5010
3. 適合ネジ : 十字穴付きなべ小ネジ (58203-0020)
APPLICABLE SCREW : CROSS RECESSED PAN HEAD MACHINE SCREW (58203-0020)
ネジサイズ : M2.5X8
SCREW SIZE : M2.5X8

59589-5000	59589-50**
MATERIAL NO.	MODEL NO.

DO NOT SCALE DRAWING

EC NO. DRWN: CHK: APPR:	EC NO. DRWN: CHK: APPR:	EC NO. DRWN: CHK: APPR:	REVISED '02/06/03 EC NO. J2002-3016 DRWN: S.AKIYAMA CHK: J.MIYAZAWA APPR: YO.ITO	REVISED '02/02/04 EC NO. J2002-1828 DRWN: S.AKIYAMA CHK: J.MIYAZAWA APPR: YO.ITO
A				

MATERIAL 材料	注記参照 SEE NOTES
FINISH 仕上げ	#
WIRE RANGE 適用線径範囲	#
INS. RANGE 被覆外径	#

GENERAL TOLERANCES: (UNLESS SPECIFIED) 一般公差	SCALE	DESIGN UNITS
10 UNDER 未満	10 OVER 30 UNDER 以上 未満	30 OVER 以上
±0.2	±0.25	±0.3
ANGLE 角度	±3°	

DRAWN BY & DATE <i>S. Akiyama</i> '02/01/22	CHECKED BY & DATE <i>J. Mizuno</i> '02/02/04	APPROVED BY & DATE <i>Y. Ito</i> '02/02/04
CAD FILENAME 59589002.S01		

DIMENSIONS: <input type="checkbox"/> mm <input type="checkbox"/> INCH <input checked="" type="checkbox"/> mm ONLY		SHT REVISE ON CAD ONLY
THIRD ANGLE PROJECTION		
TITLE: COMPACT ROBOT CONN. 50CKT. CABLE CLAMP		
MOLEX INCORPORATED		
MATERIAL NO. SEE CHART	DRAWING NO. SD-59589-002	SHEET NO. 1 OF 1
THIS DRAWING CONTAINS INFORMATION THAT IS PROPRIETARY TO MOLEX INCORPORATED AND SHOULD NOT BE USED WITHOUT WRITTEN PERMISSION.		SIZE B