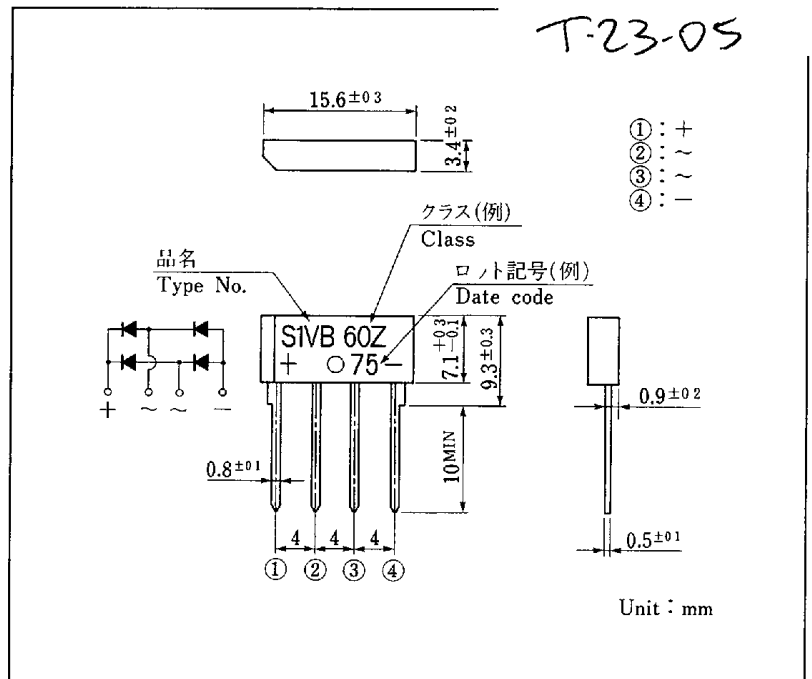
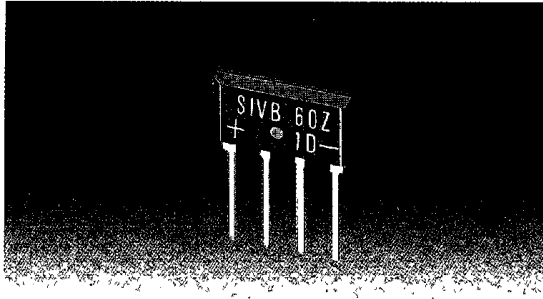


T-23-05

S1VB□Z

600V 1A



- ①: +
- ②: ~
- ③: ~
- ④: -

Unit : mm

■ 定格表 RATINGS

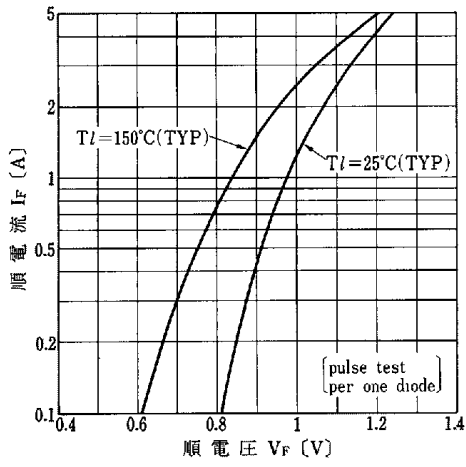
絶対最大定格 Absolute Maximum Ratings

項目 Item	記号 Symbol	条件 Conditions	品名 Type No.			単位 Unit
			S1VB20Z	S1VB40Z	S1VB60Z	
保存温度 Storage Temperature	Tstg		-40~150			°C
接合部温度 Operating Junction Temperature	Tj		150			°C
せん頭逆電圧 Maximum Reverse Voltage	V _{RM}		200	400	600	V
出力電流 Average Rectified Forward Current	I _O	50Hz正弦波, 抵抗負荷, プリント基板実装, Ta=25°C 50Hz sine wave, R-load, On glass-epoxy substrate, Ta=25°C	1			A
せん頭サージ順電流 Peak Surge Forward Current	I _{FSM}	50Hz正弦波, 非繰り返し1サイクルせん頭値, Tj=25°C 50Hz sine wave, Non-repetitive 1 cycle peak value, Tj=25°C	30			A
電流2乗時間積 Current Squared Time	I ² t	1ms ≤ t < 10ms Tc=25°C	2.5			A ² s
せん頭サージ逆電力 Peak Surge Reverse Power	PRSM	パルス幅10μs, 非繰り返し, 1素子当り, Tj=25°C Pulse width 10μs, Non-repetitive, Rating of per diode, Tj=25°C	1			kW

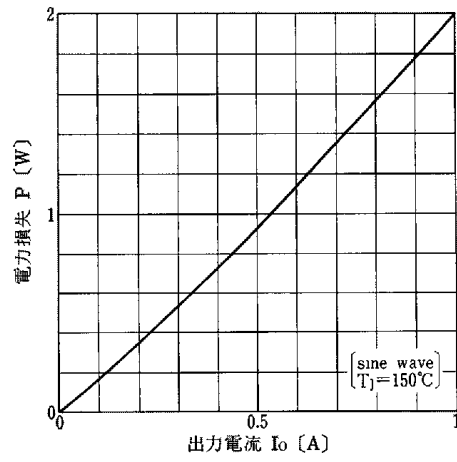
電氣的・熱的特性 Electrical Characteristics (Tl=25°C)

順電圧 Forward Voltage	V _F	I _F =0.5A, パルス測定, 1素子当りの規格値 Pulse measurement, Rating of per diode	MAX 1.05			V
逆電流 Reverse Current	I _R	V _R =V _{RM} , パルス測定, 1素子当りの規格値 Pulse measurement, Rating of per diode	MAX 10			μA
降伏電圧 Avalanche Voltage	V _Z	I _R =0.6mA, 1素子当りの規格値 Rating of per diode	MIN 250	MIN 500	MIN 750	V
熱抵抗 Thermal Resistance	θ _{jl}	接合部・リード間 Between junction and lead	MAX 16			°C/W
	θ _{ja}	接合部・周囲間 Between junction and ambient	MAX 62			

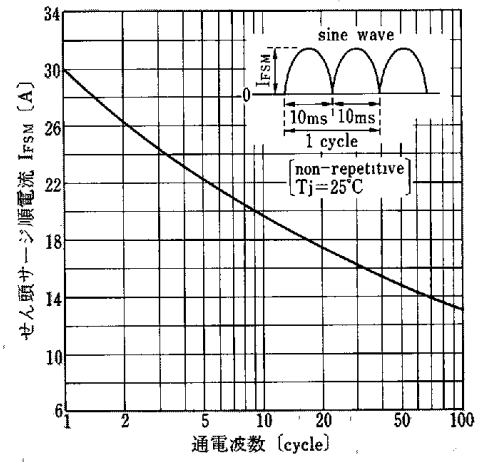
順方向特性
Forward Voltage



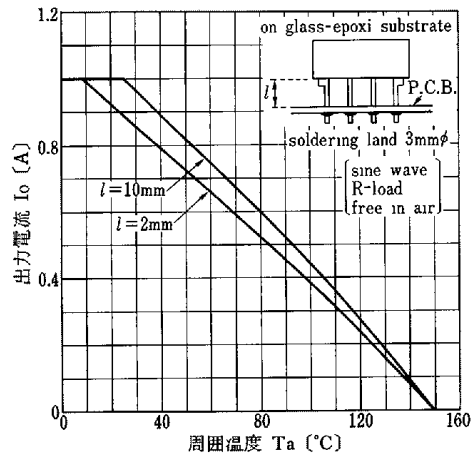
電力損失曲線
Power Dissipation



せん頭サージ順電流耐量
Surge Forward Current Capability



ディレーティングカーブ T_a-I_o
Derating Curve T_a-I_o



せん頭サージ逆電力耐量
Surge Reverse Power Capability

