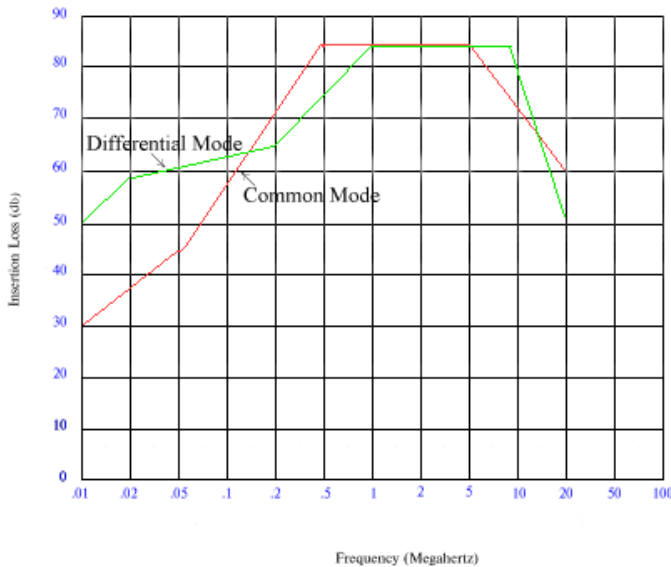
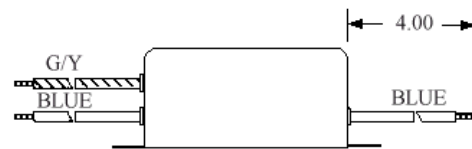
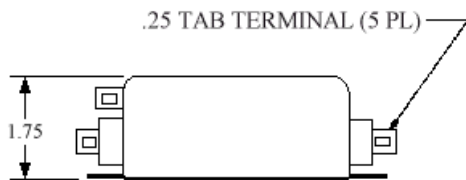
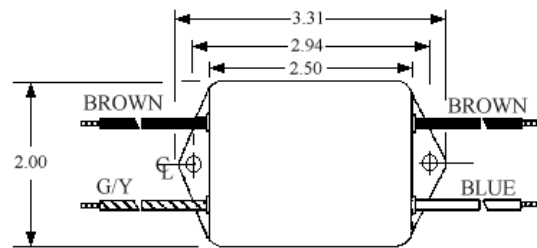
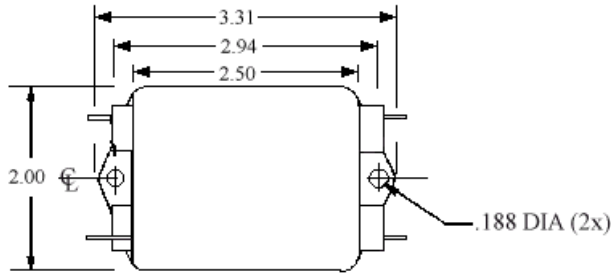
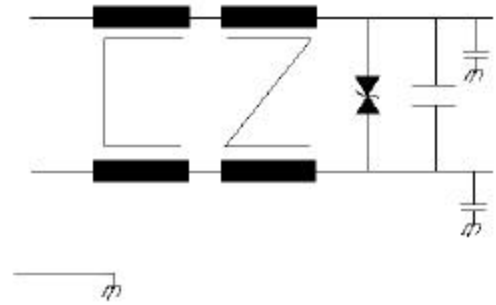




# 1135 SERIES

Operating Voltage= 100 Vdc  
 Operating Current Max= 1,2,3,5 & 10amps  
 Operating Frequency= DC  
 Temperature Range= -20 to 50oC  
 Die Withstand(Line to Case)= 1500Vdc



The 1135 Series is designed to provide filtering for DC systems operating in very noisy environments. This filter series will attenuate RF noise from switching power supplies as well as transient noise from relays and other switching devices.

**JMK P/N Ordering Information**

Current Rating	Terminals	JMK Part Number
1	.250 Faston Tabs	AA-1135-1
	Flying Leads	FF-1135-1
2	.250 Faston Tabs	AA-1135-2
	Flying Leads	FF-1135-2
3	.250 Faston Tabs	AA-1135-3
	Flying Leads	FF-1135-3
5	.250 Faston Tabs	AA-1135-5
	Flying Leads	FF-1135-5
10	.250 Faston Tabs	AA-1135-10
	Flying Leads	FF-1135-10