

---

## Features

Atmel's ProChip Designer v4.0 with the Mentor Graphics® Software Update seamlessly integrates the following software components into one Integrated Development Environment (IDE):

- **Precision® RTL Synthesis - VHDL and Verilog® synthesis supports from Mentor Graphics**
- **ModelSim® - VHDL and Verilog simulation supports from Mentor Graphics**
- **PeakFPGA™ - VHDL synthesis and simulation support from Altium®**
- **Protel® 99SE - Schematic and CUPL® design entry, synthesis and simulation supports from Altium**
- **FIT15xx - Fitters for the ATF15xx CPLDs from Atmel**
- **HDL Planner - VHDL and Verilog design entry and text editing support from Atmel**
- **ATMEL ISP - JTAG In-System programming (ISP) support from Atmel**

## Description

Atmel's ProChip Designer is a fully featured EDA software suite incorporating state-of-the-art synthesis and simulation tools from Mentor Graphics and Altium with Atmel's user-friendly interface/design navigator and powerful fitter technologies. The combination of these tools will enable CPLD designers to achieve the highest possible logic utilization from the Atmel ATF15xxAS/ASL/ASV/ASVL/BE series CPLDs (Complex Programmable Logic Devices) with Logic Doubling® features.

Through all of the software components available within the ProChip Designer Software Suite, the following features are supported:

- Design Entry & Synthesis
  - VHDL
  - Verilog
  - CUPL
  - Schematic
- Simulation
  - VHDL functional and timing simulation
  - Verilog functional and timing simulation
  - CUPL functional simulation
- Device
  - ATF15xxBE - 1.8V ultra-low-power CPLD
  - ATF15xxAS/ASL - 5.0V standard and low-power CPLD
  - ATF15xxASV/ASVL - 3.3V standard and low-power CPLD
- Programming
  - JTAG ISP

## Software Suite Components

The software components within the ProChip Designer Software Suite are divided into two groups. These two software groups, their contents, license terms and ordering code are described in [Table 1](#) in detail.



---

## ProChip Designer® Software Suite Overview

---





**Table 1.** ProChip Designer Software Suite Contents and License Terms

Software	Content	License Term
ProChip Designer v4.0	<b>Evaluation Edition</b>	
	ProChip Designer v4.0	Free
	30-day Trial version of Altium PeakFPGA	Free 30-day trial period
	30-day Trial version of Altium Protel99SE	
	<b>Licensed Edition</b>	
	ProChip Designer v4.0	Free
	Licensed version of Altium PeakFPGA	Permanent license [P/N: ATDS1500PC]
	Licensed version of Altium Protel99SE	
Mentor Graphics Software Update	ProChip 4.0 Software Patch	Free
	MGC Precision RTL Synthesis	Free 6-month evaluation license 1-year license [P/N: ATDS15xxKSW1]
	MGC ModelSim	
	License Configuration Utility	Free
	Atmel ISP	Free

Note: Atmel's software tools are supported on Microsoft® Windows® operating systems. The details of the operating system supports for other vendors' tools can be obtained from the third-party tool vendors' websites or documentation.

For the ProChip Designer v4.0 Evaluation Edition, it comes with the 30-day Trial version of Altium PeakFPGA and Protel 99SE. A license is not needed to install the trial version software. However, they can be installed onto a PC only once. When the trial period expires, users can purchase the Licensed Edition of ProChip Designer v4.0 from Atmel using the ordering code [ATDS1500PC]. Upon the purchase, a ProChip Designer v4.0 Software CD along with the 16-digit Access Code (permanent license) will be mailed. Users can then follow the installation instructions to uninstall the Evaluation Edition software and install the Licensed Edition software.

The ProChip Designer v4.0 Evaluation Edition is available on the ProChip Designer v4.0 Software CD and the Atmel website at [www.atmel.com/dyn/products/tools\\_card.asp?tool\\_id=2756](http://www.atmel.com/dyn/products/tools_card.asp?tool_id=2756).

After successfully installing ProChip Designer v4.0 (Evaluation or Licensed Edition), the Mentor Graphics Software Update should be installed by following the installation instructions provided with the update. This update adds the support for the ATF15xxBE, Mentor Graphics Precision and ModelSim, latest fitters, and latest Atmel CPLD ISP software into the ProChip Designer v4.0 Software Suite.

To use Precision or ModelSim, a FLEXLM® license file from Atmel is required. A 6-month evaluation license can be obtained from Atmel by registering online at [www.atmel.com/products/pld/forms/reg\\_license.asp](http://www.atmel.com/products/pld/forms/reg_license.asp). Atmel also offers annual (1-year) licenses for Precision/ModelSim, which can be purchased using the ordering code [ATDS15xxKSW1]. Upon the purchase, a ProChip Designer v4.0 Software CD along with a Serial Number will be mailed. Users can then request for the annual license from Atmel online at the URL shown above with the Serial Number provided.

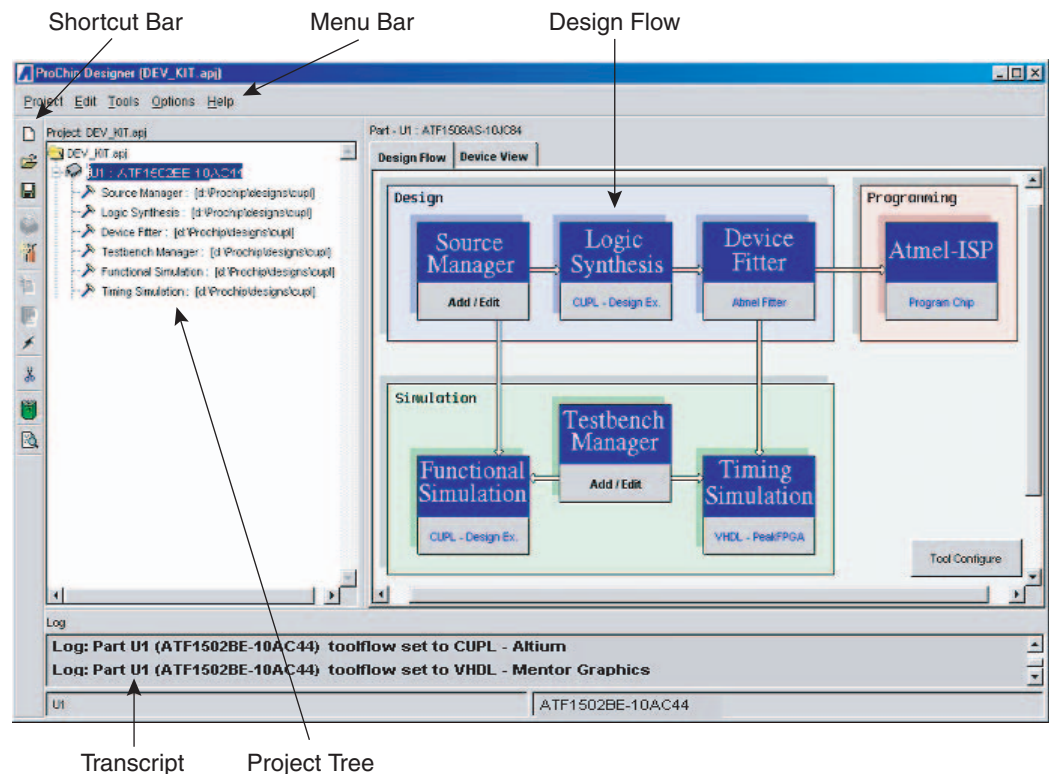
# ProChip Designer Software Suite Overview

Note: The license terms for Altium PeakFPGA/Protel 99SE and Mentor Graphics Precision/ModelSim are independent of each other. Therefore, even after the 30-day Trial period for the Altium tools has expired, Precision and ModelSim can continue to be used until the license period for them expires. Similarly, Protel 99SE and PeakFPGA can continue to be used even after the license period for Precision/ModelSim has expired.

## Software Design Flow

The ProChip Designer v4.0 IDE is shown in Figure 1. The Design Flow chart on the right provides push-button access to all the stages of a design cycle. Description of the features for each design flow stage is described in Table 2.

Figure 1. ProChip Designer v4.0 IDE



**Table 2.** Description of Design Flow Stages

Design Flow Stage	Description
Source Manager	To specify the new or existing design file(s). Launches the appropriate design entry tool for editing based on the selected tool-flow.
Logic Synthesis	To synthesize the design file(s) to generate the appropriate netlist file.
Device Fitter	To fit the netlist into the target device with the user selected fitter options.
Testbench Manager	To specify the new or existing testbench file(s). Launches the appropriate testbench entry tool for editing based on the selected tool-flow.
Functional Simulation	To perform functional simulation on the design file(s).
Timing Simulation	To perform timing simulation on the output netlist generated by the fitter after fitting.
Atmel ISP	To program the target ATF15xx CPLD through JTAG-ISP.

For details on how to use ProChip, refer to the ProChip Designer Help File, tutorials, and Online Resources. These resources are available under the ProChip Help menu.

## Technical Support

Submit questions online at: <http://www.atmel.com/dyn/products/support.asp>

FAQ: [http://www.atmel.com/dyn/products/tech\\_support.asp?Faq=y](http://www.atmel.com/dyn/products/tech_support.asp?Faq=y)



## Atmel Corporation

2325 Orchard Parkway  
San Jose, CA 95131, USA  
Tel: 1(408) 441-0311  
Fax: 1(408) 487-2600

## Regional Headquarters

### Europe

Atmel Sarl  
Route des Arsenalux 41  
Case Postale 80  
CH-1705 Fribourg  
Switzerland  
Tel: (41) 26-426-5555  
Fax: (41) 26-426-5500

### Asia

Room 1219  
Chinachem Golden Plaza  
77 Mody Road Tsimshatsui  
East Kowloon  
Hong Kong  
Tel: (852) 2721-9778  
Fax: (852) 2722-1369

### Japan

9F, Tonetsu Shinkawa Bldg.  
1-24-8 Shinkawa  
Chuo-ku, Tokyo 104-0033  
Japan  
Tel: (81) 3-3523-3551  
Fax: (81) 3-3523-7581

## Atmel Operations

### Memory

2325 Orchard Parkway  
San Jose, CA 95131, USA  
Tel: 1(408) 441-0311  
Fax: 1(408) 436-4314

### Microcontrollers

2325 Orchard Parkway  
San Jose, CA 95131, USA  
Tel: 1(408) 441-0311  
Fax: 1(408) 436-4314

La Chantrerie  
BP 70602  
44306 Nantes Cedex 3, France  
Tel: (33) 2-40-18-18-18  
Fax: (33) 2-40-18-19-60

### ASIC/ASSP/Smart Cards

Zone Industrielle  
13106 Rousset Cedex, France  
Tel: (33) 4-42-53-60-00  
Fax: (33) 4-42-53-60-01

1150 East Cheyenne Mtn. Blvd.  
Colorado Springs, CO 80906, USA  
Tel: 1(719) 576-3300  
Fax: 1(719) 540-1759

Scottish Enterprise Technology Park  
Maxwell Building  
East Kilbride G75 0QR, Scotland  
Tel: (44) 1355-803-000  
Fax: (44) 1355-242-743

### RF/Automotive

Theresienstrasse 2  
Postfach 3535  
74025 Heilbronn, Germany  
Tel: (49) 71-31-67-0  
Fax: (49) 71-31-67-2340

1150 East Cheyenne Mtn. Blvd.  
Colorado Springs, CO 80906, USA  
Tel: 1(719) 576-3300  
Fax: 1(719) 540-1759

### Biometrics/Imaging/Hi-Rel MPU/ High-Speed Converters/RF Datacom

Avenue de Rochepleine  
BP 123  
38521 Saint-Egreve Cedex, France  
Tel: (33) 4-76-58-30-00  
Fax: (33) 4-76-58-34-80

---

## Literature Requests

[www.atmel.com/literature](http://www.atmel.com/literature)

**Disclaimer:** The information in this document is provided in connection with Atmel products. No license, express or implied, by estoppel or otherwise, to any intellectual property right is granted by this document or in connection with the sale of Atmel products. **EXCEPT AS SET FORTH IN ATMEL'S TERMS AND CONDITIONS OF SALE LOCATED ON ATMEL'S WEB SITE, ATMEL ASSUMES NO LIABILITY WHATSOEVER AND DISCLAIMS ANY EXPRESS, IMPLIED OR STATUTORY WARRANTY RELATING TO ITS PRODUCTS INCLUDING, BUT NOT LIMITED TO, THE IMPLIED WARRANTY OF MERCHANTABILITY, FITNESS FOR A PARTICULAR PURPOSE, OR NON-INFRINGEMENT. IN NO EVENT SHALL ATMEL BE LIABLE FOR ANY DIRECT, INDIRECT, CONSEQUENTIAL, PUNITIVE, SPECIAL OR INCIDENTAL DAMAGES (INCLUDING, WITHOUT LIMITATION, DAMAGES FOR LOSS OF PROFITS, BUSINESS INTERRUPTION, OR LOSS OF INFORMATION) ARISING OUT OF THE USE OR INABILITY TO USE THIS DOCUMENT, EVEN IF ATMEL HAS BEEN ADVISED OF THE POSSIBILITY OF SUCH DAMAGES.** Atmel makes no representations or warranties with respect to the accuracy or completeness of the contents of this document and reserves the right to make changes to specifications and product descriptions at any time without notice. Atmel does not make any commitment to update the information contained herein. Unless specifically provided otherwise, Atmel products are not suitable for, and shall not be used in, automotive applications. Atmel's products are not intended, authorized, or warranted for use as components in applications intended to support or sustain life.

© Atmel Corporation 2006. All rights reserved. Atmel®, logo and combinations thereof, Everywhere You Are®, ProChip Designer®, Logic Doubling® and others are registered trademarks or trademarks of Atmel Corporation or its subsidiaries. Windows® and others are registered trademarks of Microsoft Corporation in the United States and/or other countries. Mentor Graphics®, ModelSim®, Precision®, and others are registered trademarks of Mentor Graphics Corporation or its subsidiaries in the United States and/or other countries. Other terms and product names may be trademarks of others.