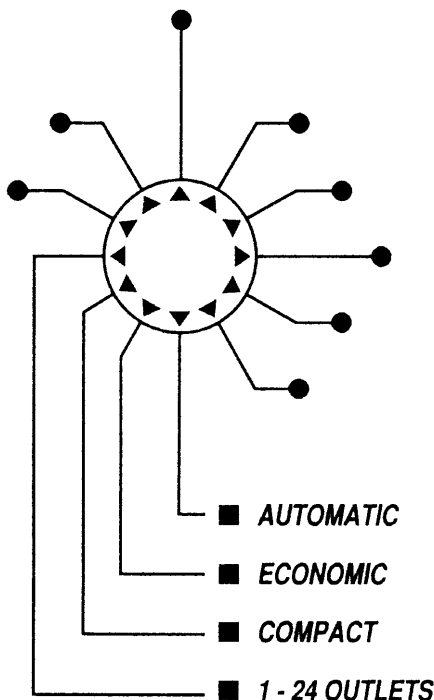


TECALEMIT INTERLUBE



AX

**CENTRALISED MULTI-LINE
LUBRICATION SYSTEM**

NLGI GRADE 000 - 2 GREASE OILS SAE 80/90



The AX automatic multi-line system provides an inexpensive, reliable method of centralised lubrication which is highly cost effective in comparison with manual lubrication. The multi-line concept offers the distinct advantage that in the event of accidental damage to one delivery line the remaining outlet lines are unaffected.

PUMP

AX is a self contained, automatic, electrically driven pump unit, available with a maximum of 24 outlets in a choice of 110 or 240 volt rating. Larger models for special applications can also be supplied.

A geared synchronous motor connected to a camshaft mechanically activates a series of pumping units. A rotating impeller within the reservoir ensures an even flow of lubricant to these units. An integral PCB controls the delay period(s) and then initiates a complete revolution of the cam, thereby completing one lubrication cycle. A choice of four delay periods is available.

AX does not require external controls and is therefore simple to install and maintain. Construction is of waterproof and corrosion resistant materials, making AX ideal for industrial applications.

PUMPING UNITS

Positive displacement Pumping Units are available in six different stroke outputs to cater for varying size bearings.

They are supplied complete with outlet fittings suitable for 4mm and 5/32in tubing.

Colour Code	Stroke Output (cc)	Part No.
Red	0.010	78033
Green	0.015	78034
Orange	0.025	78035
Blue	0.040	78036
Silver	0.060	78037
Black	0.100	78038
Blanking Plug (for unused outlets)		34237-402



TECALEMIT

TECALEMIT SYSTEMS LIMITED

Manufacturers of Interlube & Tecamec Products

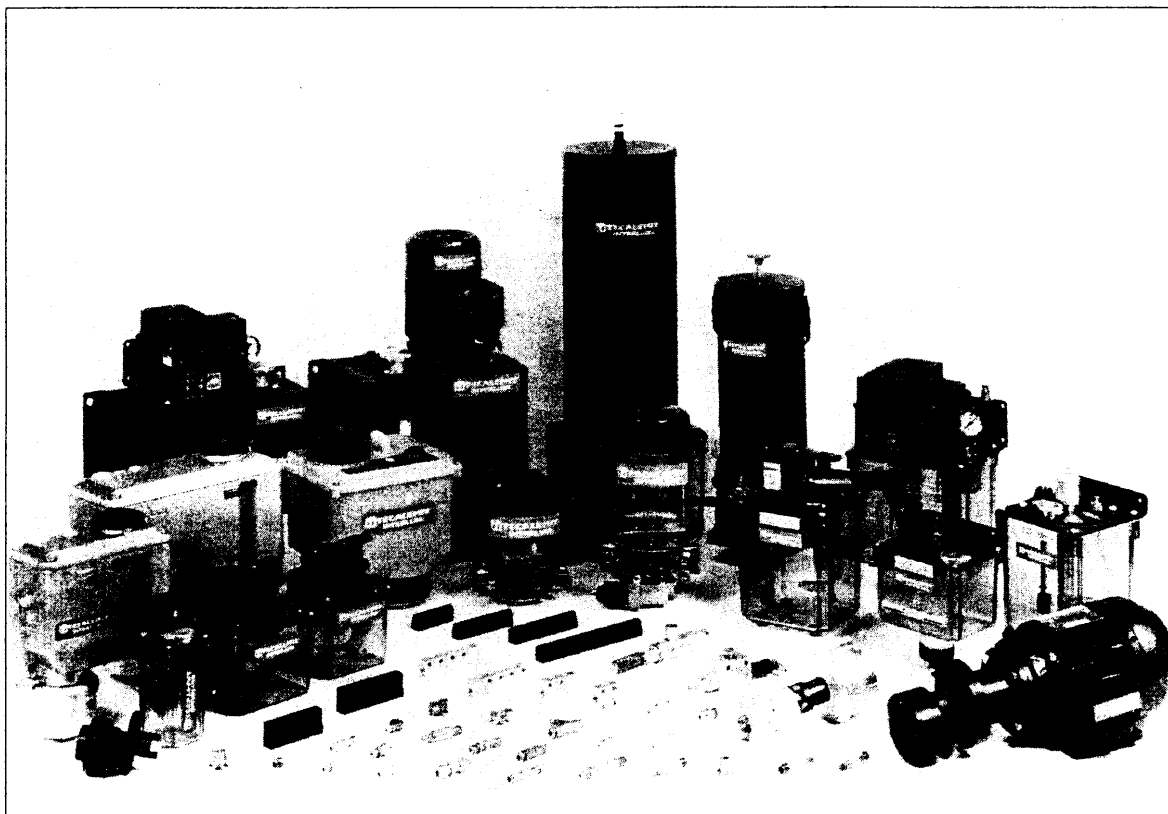
Estover Road, Plymouth, Devon, England PL6 7PS
Telephone: 0752 775781 Fax: 0752 777316
Cables: Interlube, Plymouth Telex: 45260



INTERLUBE

TTECALEMIT INTERLUBE

CENTRALISED LUBRICATING SYSTEMS INDUSTRIAL PROGRAMME



The systems described herein form the standard range of Tecalemit equipment. A wide choice of pumps is available and separate technical data sheets can be supplied on request. Please consult our engineering department for special applications not covered by the systems illustrated.

TTECALEMIT

TECALEMIT SYSTEMS LIMITED

Estover Road, Plymouth, Devon, England PL6 7PS

Telephone: 0752 775781 Fax: 0752 777316

Cables: Interlube, Plymouth. Telex: 45260



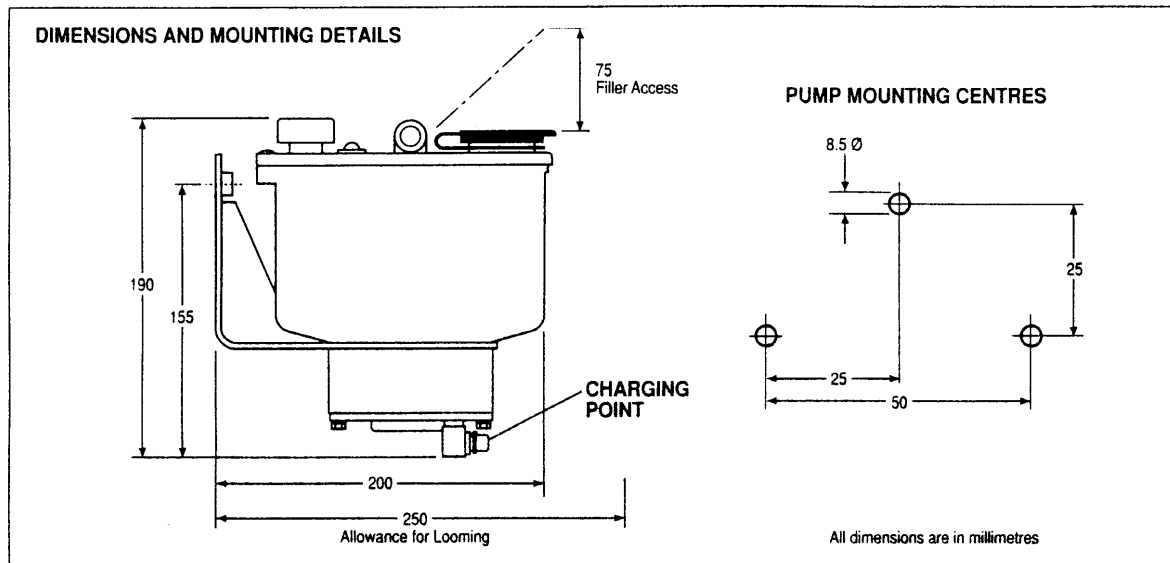
INTERLUBE

INTERLUBE AX

CENTRALISED MULTI-LINE LUBRICATION SYSTEM

Warranty

In common with all Interlube lubrication equipment the AX system carries a 2 year warranty on all parts, subject to normal terms and conditions of sale.



TECHNICAL DATA

Recommended Lubricants	OILS SAE 80/90	NLGI GREASES (GRADE)				
		000	00	0	1	2
Upper Temp. Limit	+40°C	+40°C	+40°C	+40°C	+40°C	+40°C
Lower Temp. Limit	-40°C	-35°C	-30°C	-25°C	-20°C	-15°C

Note: It is recommended, when using heavy greases, to refill the reservoir from the charging point provided. An optional Filler Attachment can be supplied when using a Filler Pump (see below)

Motor Type Geared Synchronous
Power Consumption 4 VA
Nominal Reservoir Capacity 1.25 litres
Nominal Weight (Full) 3.25 kg

METHOD OF ORDERING

To select the required combination of cycle time, voltage and number of lubrication points, please refer to the following matrix. Note that Pumping Units are ordered separately.

A X 1 * * *			
Cycle Time (Delay)		Voltage	No. of Points
1	6 mins	3 110v 50/60 Hz	1 12
2	15 mins	4 240v 50/60 Hz	2 24
3	30 mins		
4	60 mins		

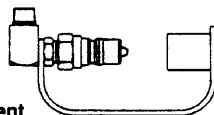
Example: AX1342 is a pump with a 30 minute cycle time, 240 volts and 24 outlets.

OPTIONAL EXTRAS

Hand Operated Filler Pump

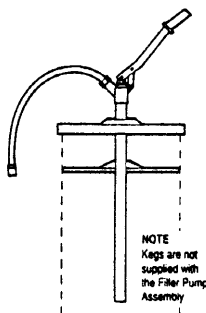
Supplied complete with pump lid, follower plate and delivery hose with female snap coupling.

For 12.5 kg grease drum FP 125
For 25 kg grease drum FP 25
For 50 kg grease drum FP 50



Filler Attachment

For use with the above pump 83416-038



ACCESSORIES

Distribution System

4mm OD semi rigid black nylon tubing, UV stabilised rated 140 Bar (14 Mm/m²). Supplied in 50 metre coils prefilled with NLGI 000 fluid grease 152823/50
As above but unprimed and supplied in
100 metre coils 152057
Pipe Straps 27233 - 507
Pipe Clip (one way) 120859

Numbered Sleeves

Supplied in kits containing two each of the following sleeves
1 to 12 OA 50397/1
1 to 24 OA 50397/2
1 to 36 OA 50397/3
1 to 48 OA 50397/4
1 to 60 OA 50397/5

Tubing Armour

For looming and feed line protection. Grey, supplied in 50 metre coils
10mm dia 1837 - 177
14mm dia 1837 - 179
18mm dia 1837 - 181

FLUID GREASE

Interlube FG3,0 is a specially blended high performance fluid grease (NLGI 000) lithium soap based with EP and Antioxidant additives, anti corrosion properties to ASTM D1743 and IP112, worked penetration 445/475, excellent low temperature properties. A non-hazardous product, no special precautions necessary. Available in the following convenient containers:-

12 x 1 Ltr. Bottles (Pack) .. 25717-284 50 Kg. Keg 25717-284/50 Kg
12.5 Kg. Keg 2571 - 284/12.5 Kg 180 Kg. Keg 25717-284/180 Kg
25 Kg. Keg 25717-284/25 Kg 6 x 3 Kg. Tins 25717-284/6 x 3 Kg

SPECIFICATIONS

The company reserves the right to amend any specification without prior notice.



TECALEMIT

TECALEMIT SYSTEMS LIMITED

Manufacturers of Interlube & Tecamec Products

Estover Road, Plymouth, Devon, England PL6 7PS
Telephone: 0752 775781 Fax: 0752 777316
Cables: Interlube, Plymouth Telex: 45260

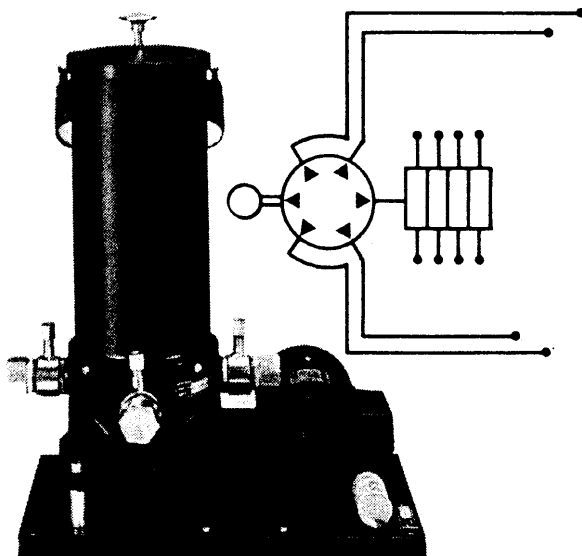


Publication No. 3044



RADIAL GREASE SYSTEMS

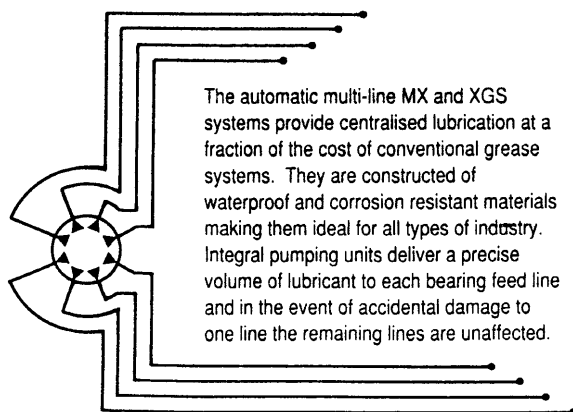
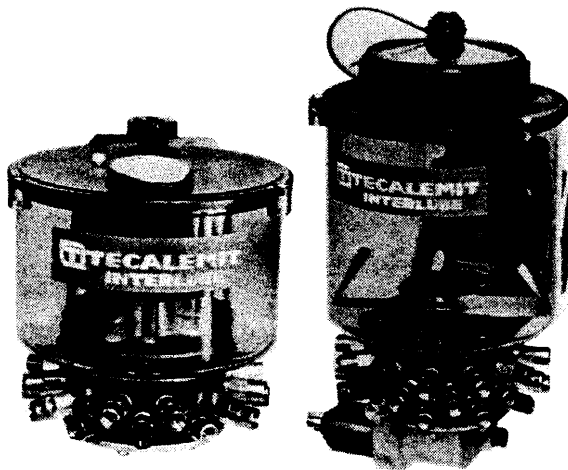
Grease or oil



Designed for heavy duty performance and reliability these multi-line radials are equipped with integral pumping units which deliver an adjustable volume of lubricant to each bearing feed line. A maximum number of 30 outlets is provided. Additional points may be covered by distribution blocks.

MULTI-LINE SYSTEMS

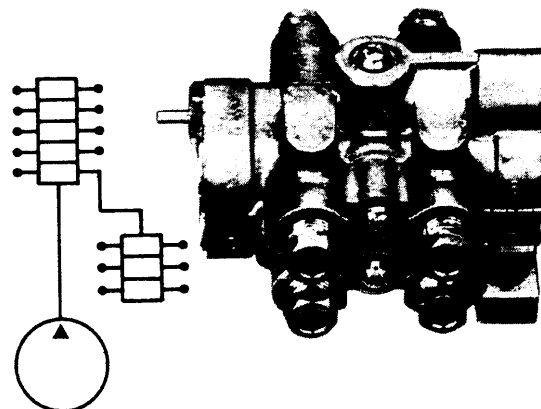
Grease (oil optional)



The automatic multi-line MX and XGS systems provide centralised lubrication at a fraction of the cost of conventional grease systems. They are constructed of waterproof and corrosion resistant materials making them ideal for all types of industry. Integral pumping units deliver a precise volume of lubricant to each bearing feed line and in the event of accidental damage to one line the remaining lines are unaffected.

SINGLE LINE PROGRESSIVE SYSTEM

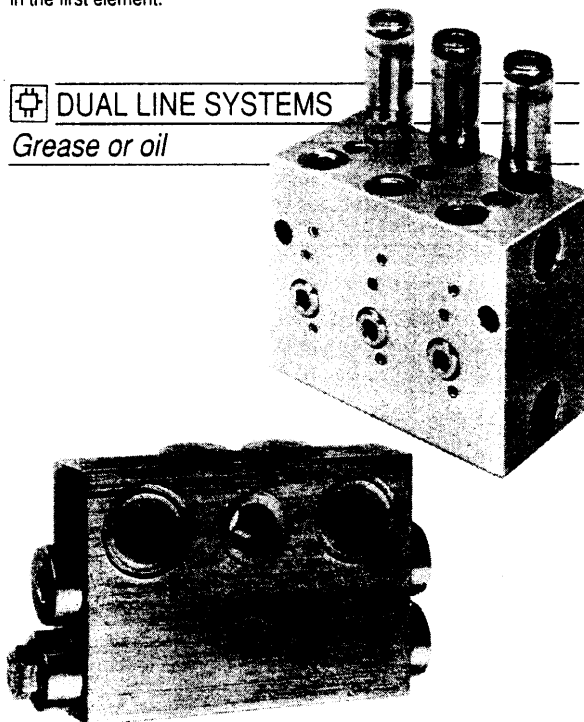
Grease or oil



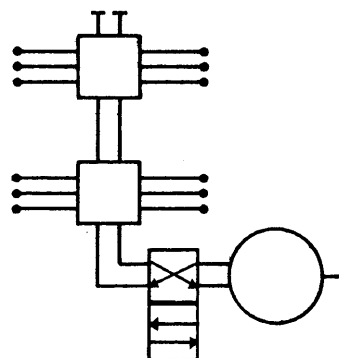
Progressive distribution blocks comprise a series of elements each having a metering piston which both discharges a volume of lubricant and controls the supply of lubricant to the next element. Any interruption to the flow can be monitored by an extended piston/switch in the first element.

DUAL LINE SYSTEMS

Grease or oil



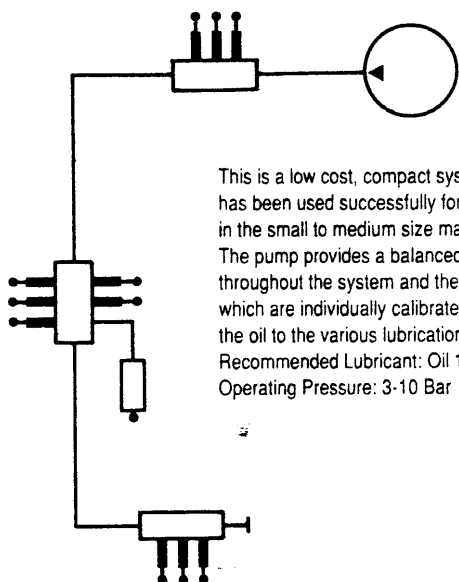
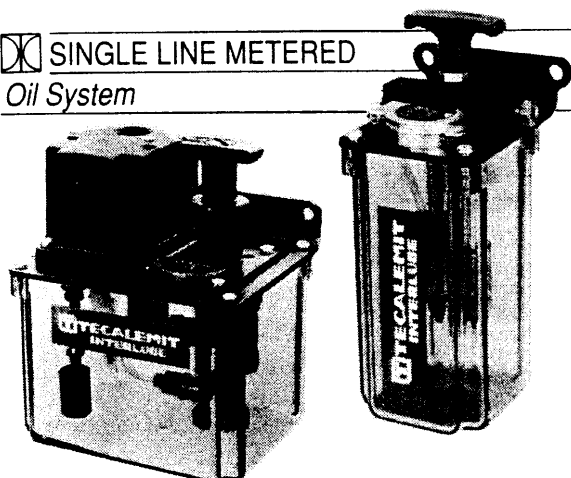
This system has two supply lines which are pressurised alternately, displacing the servo and metering pistons in the distribution blocks. The metering piston has an extended rod which provides stroke adjustment and visual indication or correct function.



INTERLUBE

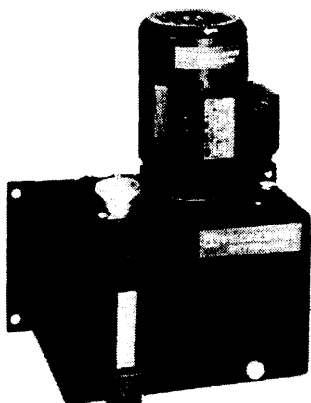
CENTRALISED LUBRICATING SYSTEMS

SINGLE LINE METERED Oil System

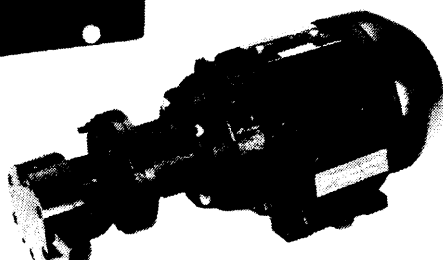


This is a low cost, compact system which has been used successfully for many years in the small to medium size machine range. The pump provides a balanced pressure throughout the system and the flow units, which are individually calibrated, apportion the oil to the various lubrication points.
Recommended Lubricant: Oil 10-1800 cSt
Operating Pressure: 3-10 Bar

GEAR PUMPS



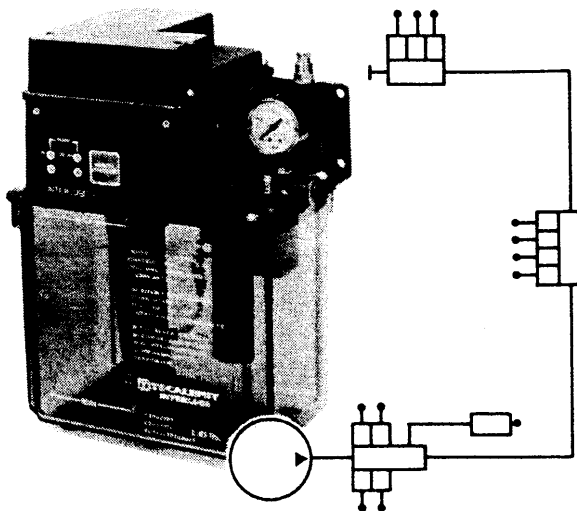
Specially designed for continuous and cyclic lubrication systems. The pump bodies are manufactured from high grade cast iron with steel gears and shafts. The pumps are suitable for oils and fluid grease. A standard range of reservoir mounted models is also available and oil recirculating modules can be produced to customer specification.



SINGLE LINE POSITIVE DISPLACEMENT SYSTEM

Oil/Fluid Grease

This is a high pressure system using positive displacement units (valves) for lubricant distribution.



STATIC POSITIVE DISPLACEMENT UNITS

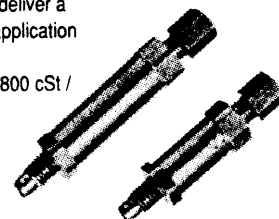
Applicable to small or large machines the design of the positive displacement valves enables this system to cover an extensive number of lubrication points. The system operates intermittently and at each cycle of the pump the valves deliver a precise volume of lubricant to the application points.

Recommended Lubricant: Oil 10-1800 cSt /
NLGI Grade 000 fluid grease.

Operating Pressure: 10-30 Bar.

Discharge range:-

.03 .06 .10 .15 .20 .40 .60 cc



DYNAMIC POSITIVE DISPLACEMENT UNITS

Designed for small to medium size machines, this system features positive displacement valves for lubricant distribution. At each cycle, the pump provides a high pressure pulse to the valves which deliver a precise volume of lubricant to the application points.

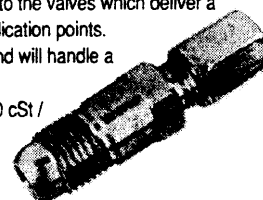
The system is intermittent total loss and will handle a wide range of lubricants.

Recommended Lubricant: Oil 20-1800 cSt /
NLGI Grade 000 fluid grease.

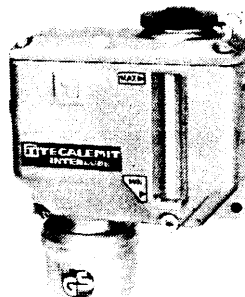
Operating Pressure: 15-100 Bar.

Discharge range:-

.005 .010 .025 .05 .10 .25 .50 1.00 cc



PISTON PUMPS



PUMP 10 P-E

Pneumatic piston pump with suction strainer and cast aluminium tank for lubricating oils or liquid greases.

PUMP 10 H-E

Hydraulic piston pump with suction strainer and cast aluminium tank for lubricating oils or liquid greases.

